

TRUE DAUGHTER OF THE OLD SOUTH, Margaret Sullivan, motion picture star, hangs a Confederate flag in honor of Jeff Davis' Day. The actress, distantly related to General Robert E. Lee, plays the lead in Paramount's "So Red The Rose," a story of the South.



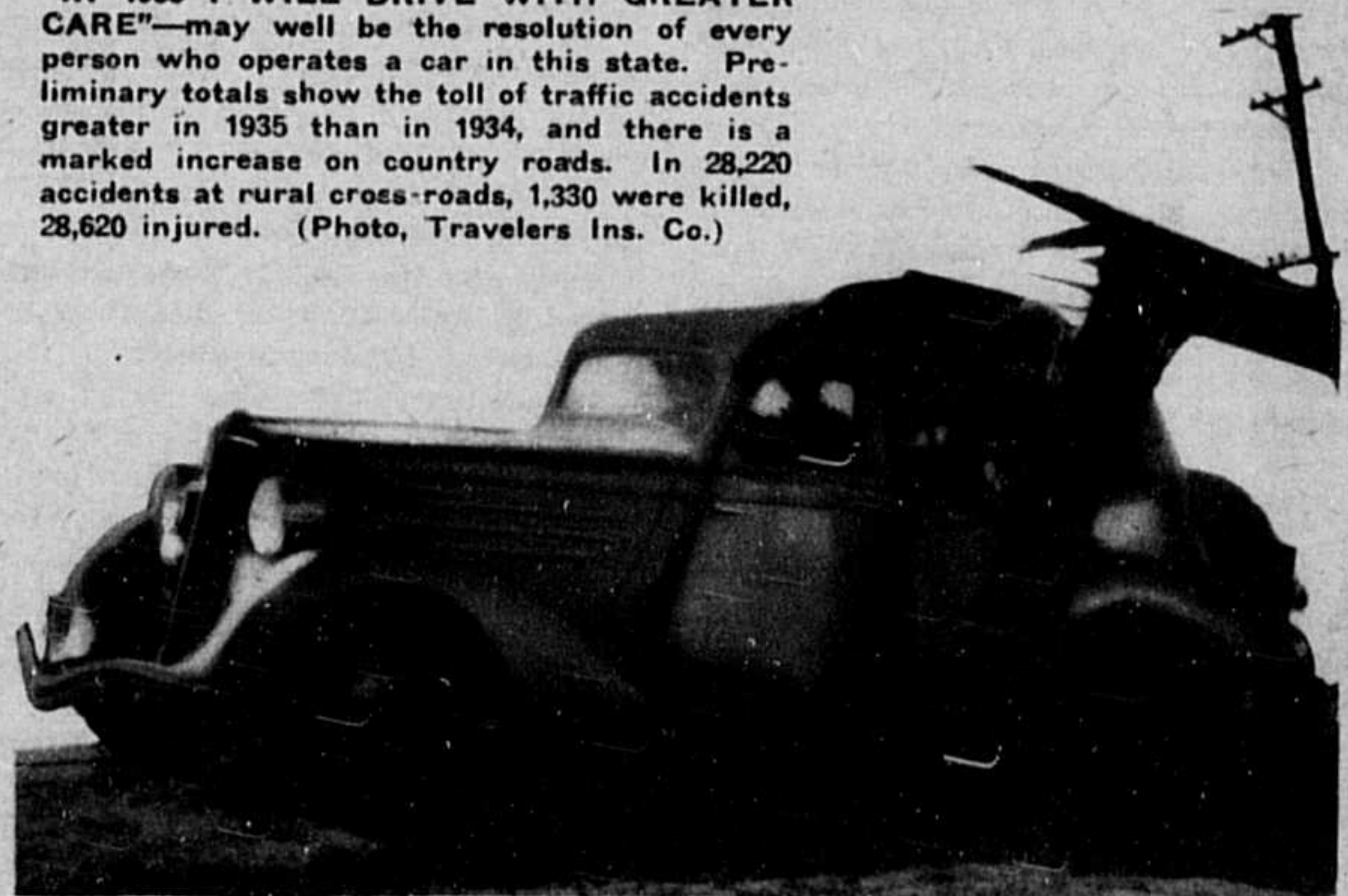
TWO YEARS WERE SPENT IN THE ORIENT by W. J. Morse, U. S. D. A. plant explorer. He here exhibits candied soybean products from Japan.



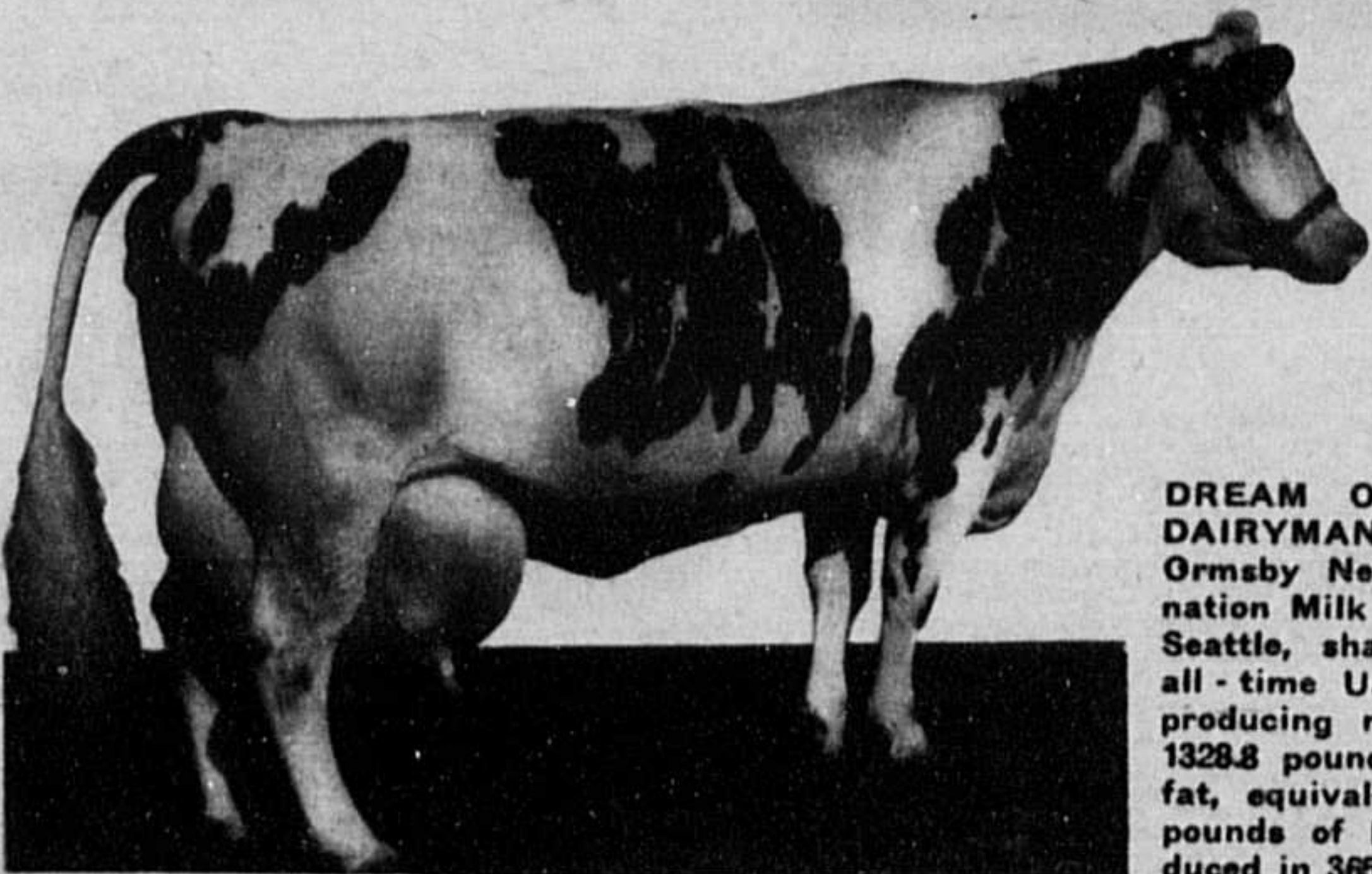
FUNNYMEN OF THE MOVIES, Laurel and Hardy continue their career of laughter. Here pictured as they appear in the Hal Roach-M-G-M version of "The Bohemian Girl."



"IN 1936 I WILL DRIVE WITH GREATER CARE"—may well be the resolution of every person who operates a car in this state. Preliminary totals show the toll of traffic accidents greater in 1935 than in 1934, and there is a marked increase on country roads. In 28,220 accidents at rural cross-roads, 1,330 were killed, 28,620 injured. (Photo, Travelers Ins. Co.)



WITH TREES HEAVIEST IN YEARS, the apple packing yards at Winchester, Virginia, held this huge over-flow, one day last fall. (Photo courtesy Va. State C. of C.)



DREAM OF EVERY DAIRYMAN, Carnation Ormsby Nellie of Carnation Milk Farms near Seattle, shattered the all-time U. S. butter-producing record, with 1328.8 pounds of butter fat, equivalent to 1661 pounds of butter, produced in 365 days.



FARM AND HOME HOUR ANNOUNCER, Everett Mitchell, Chicago, NBC, (right), says congratulations to Walter Blaufuss, NBC staff conductor (left), as Blaufuss begins his fourth year as conductor of the "Homesteaders" orchestra in the National Farm and Home Hour.