

MEETING HOUSE IN MASSACHUSETTS

MARYLAND SWEETS MEETING OF SHORE TO BE SOLD UNDER COMMISSIONERS MARKETING PLAN NEXT THURSDAY

Temporarily Adopt "Shore Acres" As Trade Mark Will Discuss Legislative Program

Leading shippers and growers of Maryland "sweets" in the Salisbury area at a meeting last week reacted favorably to a controlled sweet potato marketing plan to be sponsored by the Maryland Department of Markets, which was submitted to them by various program speakers.

S. B. Shaw, Chief of the Maryland Department of Markets, opened the shippers conference by expressing the belief that the time had arrived when Maryland sweet potato growers and shippers must grade, package, brand and advertise their products to successfully sell them at satisfactory prices in Eastern terminal markets.

Mr. Shaw told of plans for certifying grades under Federal State inspection and stated, "I thoroughly believe in a plan of controlled marketing as one of the things we must come to in merchandising our Maryland farm products instead of trusting purely to luck."

The first brand to be developed will be known as "Shore Acres" and the first shipment of Maryland "Golden" Sweet Potatoes will start movement to test territories in patented containers of 16 quart capacity early this week.

Pending the development of State of Maryland identification mark to be used on fruit and produce produced in Maryland, the brand name of "Shore Acres" will be used and in some cases shippers will use this brand in connection with their own brand identification.

Harvey Summer Stahr Died At Betterton Home

Harvey Summer Stahr, aged 64 years, died at his home in Betterton on Thursday of this week. He had been a resident of that town for the past eighteen years and was devoted to his home and was interested in the development of his community.

He is survived by his wife, Mrs. Ethel Stahr, one niece, Wellie Lance and an aunt, Evelyn Fretz.

Funeral services will be held at his late home, "Inotio" at Betterton this morning at 10 a. m., Rev. William Willey, to officiate. Interment will be in Still Pond Cemetery.

The bereaves will be Messrs. Robert Hill, William Jewell, John Dwyer, R. F. Turner, William Thompson and Edward Symes. B. R. Fellows in charge of funeral arrangements.

BETTERTON

Betterton is in its usual Christmas attire, with almost every house decorated with greens and many beautiful lighted trees in yards, the one on the Methodist Church lawn being especially pretty. The Junior League will sponsor, as has been its custom for many years, the carol singing on Christmas Eve. Both the young and the older are invited to join them in singing to the sick and shut-ins. They will travel by truck and will leave the home of Mr. Harvey Moore at six thirty. At the Sunday School hour on Sunday morning a pageant will be given before the entire school, instead of the lesson. In the evening the Epworth League service and the worship

service will be combined. At that time a service of story and song will be given, "The Light of the Christmas Candle." The service will begin at 7.30.

Mr. Harvey Stahr, one of Betterton's highly esteemed residents, passed away at his home on Wednesday morning, after a long illness. The funeral service was held at his late home on Saturday morning, with Rev. Mr. Willey, officiating. The community extends its sympathy to his bereaved family.

Christmas pageant was presented by the pupils of the elementary school on Thursday afternoon, after which Santa made his usual appearance, home and gone to Washington, where she will spend the winter months with her nieces.

Mrs. William Wheeler, has returned to her home after spending a week with Mr. and Mrs. Horace Wheeler in Baltimore.

Miss Rose Worrel and her father, left last week for Philadelphia where they will spend the winter.

Mrs. Agnes Kalback and son, Raymond, will spend the Christmas holiday at their bungalow here.

Miss Ruth Harris, of Fredericksburg, Virginia, is at home for Christmas.

Holy Communion will be celebrated on Christmas Day at the Episcopal Church and the Christmas sermon by Rev. Mr. Wyllie.

Mr. and Mrs. Philip Gooding and family, of Baltimore, were the week end guests of relatives here.

Mr. and Mrs. Harry Crew have gone to Philadelphia, to spend the Christmas holiday with their son, Mr. and Mrs. Emmet Crew.

Mr. and Mrs. John Y. Crew have also gone to Philadelphia to be with Mr. and Mrs. Norman Duckloe, for the holiday.

Miss Rebecca Groves, who has been in Philadelphia, for several months spent the week end with her mother, Mrs. Catherine Groves.

Miss Mary R. Stokes has closed her home and gone to Washington, where

WM. MEDDERS & CO., STILL POND, MD

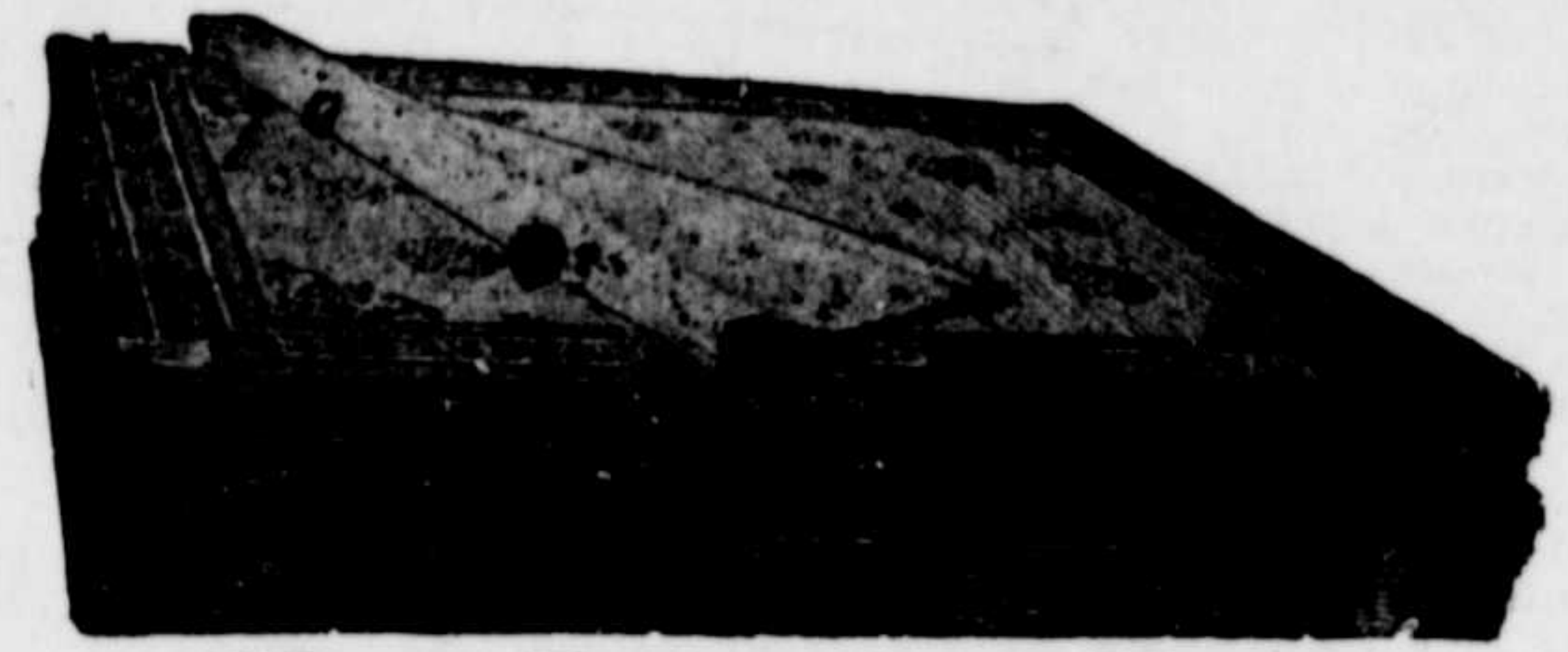
Welcome, Santa Claus!

A REAL MERRY CHRISTMAS TO ALL OUR GOOD PEOPLE

The NEW YEAR bids well, and any thing purchased at these old low-down-prices will prove a good investment. COME SEE FOR YOURSELF.

Rugs! Rugs! Rugs!

"We Keep a Real RUG Store."



New Rugs Are Here

Alexander Smith's Axminster Rugs, Extra Heavy, Full Seamless beautiful new Patterns--Oriental and Domestic Designs.

The Best 35.00 Quality 9x12 Rugs are On Sale at only 25.00

These Rugs Are Exceptional Values and Real Bargains. RUGS ARE ADVANCING.

The Lomax Reversible Rugs

Made of Heavy Wool and Fibre

Use either side, gives double wear. These pretty Rugs are in great variety and many patterns. Prices low, only 10.00, 12.50

Genuine Gold Seal Rugs 5.95



Delightful New Rugs On Sale

The New 'Gold Seal' Rugs 9x12, in the new patterns. All pretty, every one guaranteed.

BEST 7.50 GOLD SEAL RUGS only 5.95

6.50 Congoleum Rugs in Beautiful Patterns, Large Selection, Size 9x12 only 4.95

Window Shades of all kinds and colors. Made to your own order. Our prices are lower and every curtain is guaranteed in cloth and roller spring. OUR PRICES begin at 50c for standard sizes.

NIAGARA

Washable - Waterproof

Window Shades

"Pull Easy" Twin Studio Couch by SIMMONS



These beautiful Studio Couches made to your order. Select any style and color you like. Our Low Prices will please you.

OUR BEST WISHES FOR A Merry Christmas

FOR THE STUFFIN' or table use buy several loaves of

HOME STYLE BREAD ONLY 5c full 13-oz loaf

NEW LOW PRICE! A&P Raisin Loaf 10c

Our Stores Will Remain Open Late THURSDAY, FRIDAY and SATURDAY, DECEMBER 22nd, 23rd, and 24th CLOSED ALL DAY MONDAY, DEC. 26

Tender Flavorful LEGS of LAMB Lb. 25c

Quality Steer Beef **CHUCK ROAST** Lb. 19c

SCRAPPLE Lb. 12c

PORK LOINS WHOLE or RIB END Lb. 18c Up to 3 1/2 Lbs.

DRY SALT White Meat Lb. 12c

WOOD'S OLD-TIME MINCE MEAT Lb. 21c

HEINZ CUCUMBER PICKLES 1-gal. jar 21c

Fancy Assorted Chocolates In Attractive Holly Gift Box 5-lb. box 95c

SCHINDLER'S JAMPION BRAND PEAH Jumbo Salted PEANUTS 1-lb. bag 19c

FANCY CREAMERY BUTTER lb. 34c

PURE CANE SUGAR 5-lb. 24c

PURE REFINED LARD 2-lb. 19c

Sunnyfield Family FLOUR 12-lb. bag 33c

GOLD MEDAL OR PILLSBURY'S Flour 12-lb. bag 45c

ANN PAGE—PURE FRUIT Preserves VARIETIES 1-lb. jar 15c

Cranberry Sauce 2 cans 23c

Bell's Poultry Seasoning 1-lb. can 9c

R&R Plum Pudding 27c

Sun Maid Raisins 3 15-oz. cans 20c

California Peaches 2 1-lb. cans 27c

ANN PAGE—OUR BEST SELLER! Salad Dressing pint jar 17c

A&P Sauerkraut 4 1-lb. cans 23c

A&P Apple Sauce 3 3-cans 22c

Dole's Pineapple Gems 14-oz. can 11c

Dromedary Pitted Dates 7-oz. pkg. 14c

Marvin Hallowi Dates 1 1/2-lb. pkg. 21c

ANN PAGE—Plump, Tender, Meaty OLIVES 6 3/4-oz. bot. 19c

8 o'Clock Coffee 2 lbs. 29c

Red Circle Coffee 1-lb. 18c

Evap. Milk 4 tall 23c

CIGARETTES MELD, CHESTERFIELD, OLD GOLD, LUCKY STRIKE and RALPH 10-pkg. \$1.20

BEVERAGES HIGH ROCK, GOSMAN, COCA-COLA, MIRE, PEPSI-COLA, 7-UP, DR. PEPPER 6 bot. 25c

SPARKLE GELATIN DESSERTS 3 pks. 10c

JELL-O and ROYAL DESSERTS pkg. 5c

SON BONS 1-lb. 19c

CREAM DROPS 1-lb. 10c

ASST'D HARD CANDIES 2 lbs. 25c

CHOICE HARD CANDIES 1-lb. 19c

HERSHEY'S LISSCS 1-lb. bag 25c

WALNUTS 1-lb. 25c

BRAZIL NUTS 1-lb. 20c

POLISHED PECANS 1-lb. 25c

MIXED NUTS 1-lb. 23c

PAPER SHELL ALMONDS 1-lb. 29c

Juicy Florida Oranges 20 for 25c

Tangerines Doz. 12c and 15c

Grapefruit Marsh Seedless 3 for 10c

Stayman Apples 5c

Red Emperor Grapes 2 lbs. 23c

FRESH CRISP TENDER CELERY Hearts Stalks 10c 2 bchs 15c

CRANBERRIES, Late Howe 1-lb. 23c

ICEBERG LETTUCE head 12c

A & P FOOD STORES

OWNED AND OPERATED BY THE GREAT ATLANTIC AND PACIFIC TEA CO.

IT STARTS at the crack of a whip—and it's the ideal GIFT

You'll find a gift for everyone at our Waterman's counter this Christmas... Lovely Lady Patricias for mother, sister or sweetheart... Handsome Ink-Vues for father, brother or boy friend... Desk Sets, Gift Boxes, Pens and Pencils—a complete selection in latest styles and colors. Shop early at the fast-starting pen headquarters!

Waterman's the FAST-STARTING Pen

INK-VUE Pens, \$5, \$6 and \$8.50
Other Waterman's \$2.50 to \$10

J. S. Kreeger JEWELER and OPTOMETRIST
Chestertown, Maryland

Lady Patricia Ink-Vue in Gray Nib, Pen \$5, Pencil \$3.

Above Prices Effective Until the Close of Business, Saturday, December 24