

News Review of Current Events the World Over

Franco Combating Revolt in Spanish Fascist Army— Developments in Labor Situation—President's Farm Purchase Plan Opposed.

By EDWARD W. PICKARD
© Western Newspaper Union

GENERAL FRANCO'S revolution in Spain, already checked by serious defeats on both the northern and the southern fronts, was further embarrassed by spreading revolt among the Fascist troops. His agents uncovered the plot and numerous arrests were speedily followed by numerous executions by firing squads. The mutiny first broke out in Spanish Morocco, and Franco himself hurried there by plane. There were persistent reports that 1,000 Italian soldiers had been landed at Ceuta and were being used to crush the mutiny. This was denied by the Fascist high commissioner of Morocco.

Gen. Franco

More than 100 high-ranking officers, most of them belonging to the air force, were said to have been implicated in the plot which was seemingly well laid in all parts of Spanish Morocco and the southern tip of European Spain. Government troops were said to be pushing back toward Cordoba the Fascist forces which were trying to break through for capture of the rich coal and mineral territory about Pozoblanco. The insurgent army there, alleged to include 10,000 Italians and Germans, was in danger of being surrounded and annihilated. Great Britain and France officially warned Franco that they would no longer tolerate the stopping and searching of British and French merchant vessels by his warships.

DEADLOCK over a new wage agreement brought about a walkout of soft coal miners in the Pennsylvania and West Virginia fields and its spread to other fields was certain unless the controversy were settled. The mine operators and officials of the United Mine Workers of America have been long in negotiation, with John L. Lewis dictating the stand taken by the latter. Edward F. McGrady, assistant secretary of labor, was trying hard to help bring about a settlement and kept the White House informed of developments. Maintenance men were ordered to stand by in the mines, but about 400,000 men quit work.

PRESIDENT ROOSEVELT discussed the labor situation with Secretary Perkins and Sidney Hillman, chief organizer of the C. I. O. drive to unionize the textile workers. Hillman told him he was hopeful the problems of the textile industry could be settled by co-operation and arbitration, and it was reported that he promised the textile workers would not attempt to use the sit-down strike.

Senator Wagner of New York delivered an address in the senate on the sit-down strike situation, charging that the blame of it rested on a few giant corporations which, he said, have "hamstrung" the labor relations board by invoking injunctions in the courts and "who have openly banded together to defy" the labor relations law.

Deriding the call for new federal legislation to meet the crisis, Senator Wagner declared that "the lack of power in the federal government to enforce the labor relations act and not any weakness in existing law is the root cause for the present economic warfare."

Representative Martin Dies of Texas appeared before the house rules committee and urged action on his resolution for a congressional investigation of the strike situation. He again called upon the President to intervene and pointed to section 5299 of the revised United States statutes as giving the chief executive authority to take action in the event of such an occurrence as the Chrysler strike.

The continued silence of the President on the issue is "ominous," Representative Charles L. Gifford of Massachusetts told the house. He warned the President against the rise to power of John L. Lewis. Negotiations for settlement of the General Motors strike were progressing slowly, and officials of the corporation said that 10,100 employees were idle in four plants because of strikes in Pontiac and Flint, Mich.

UNDER pressure from his advisers to take a public stand concerning the sit-down strike, President Roosevelt immediately after his return from Warm Springs held a conference with Vice President Garner, Senate Majority Leader Joe Robinson, Speaker Bankhead and House Majority Leader Sam Rayburn. At its close Senator Robinson, presumably voicing Mr. Roosevelt's views, said:

"The government cannot initiate action under the circumstances thus far presented. It is felt that the sit-down strike situation in a general sense is improving.

"There are two conditions under which federal action may be invoked in case of acute strike conditions; namely where federal laws have been violated or where federal property, including the mails, is interfered with.

"Unless one of these conditions exists, federal intervention or action, under the Constitution and decision of the courts, is not warranted. "The second condition is cases where state authorities, under the federal law, ask the services of federal agencies in the preservation of law and order and in the prevention of violence. "Neither condition has so far arisen. Except in instances where interstate commerce is interfered with, where a federal law is disregarded, the federal government does not, and cannot under the Constitution, initiate action."

SEVEN Democrats joined the six Republicans on the house agriculture committee and disapproved the President's proposal to allot \$50,000,000 to assist farm tenants to buy farms on easy credit terms. This majority of the committee objected to the program because it would put the government into the real estate business. The proposition is contained in one section of the farm tenant bill and would authorize the secretary of agriculture to buy farms for resale to tenants on terms that would give them as long as 45 years to pay. The interest rate would be 3 per cent. Sponsors of the measure probably will try to get it through the senate, and after house refusal to agree it would then go to conference.

Only the day before the President had given out his farm tenancy program as follows: 1. Continuation of rehabilitation loans, most of which would go to people living on land which the government believes can be made to pay. 2. Purchase of submarginal land so that it can be taken out of cultivation and put into timber or grasses. 3. Federal purchase of land for resettlement of families taken off submarginal land and purchase of tenant farms to give tenants a chance to own the land they are tilling.

SENATOR GEORGE NORRIS of Nebraska is intent on his plan for the creation of a national power authority similar to the Tennessee Valley authority, and he intends to introduce a bill for this during the present session of congress. This he announced after conferring with the President, and he intimated the idea was approved by Mr. Roosevelt. He has experts at work investigating its feasibility and mapping out the details. "All rivers of the United States should be controlled by the nation if their nature is subject to it by national flood control policy," the senator said. "Whenever the river will develop power, we should take advantage of it. I've always regarded power as a subsidiary or by-product of flood control."

A LINK with a past era was broken by the death in Washington of Mrs. Robert Todd Lincoln at the age of ninety years. She was the daughter-in-law of President Lincoln and the mother and grandmother of his only living descendants, Mrs. Charles Isham, Mrs. Jessie Randolph and their three children. Mrs. Lincoln was the daughter of James Harlan, who was a senator from Iowa and later secretary of the interior. In 1868 she married Robert Todd Lincoln, the martyred President's son. In the administrations of Presidents Garfield and Arthur her husband served as secretary of war, and under President Benjamin Harrison, he served as minister to England. Afterward he was general counsel and then president of the Pullman company.

DICTATOR JOSEPH STALIN of Russia, in his official capacity as secretary of the central committee of the Communist party, demands a new purge of the party, so we probably will read soon of another mass execution of hundreds under arrest. "I think it is clear," said Stalin, "that the present wreckers and diversionists—no matter whether they have masked themselves under the flag of Trotskyism or Bukharinism—have lost their influence in the worker's movement and have become simply an unprincipled and idealless band of professional wreckers, diversionists, spies and murderers. "It is quite clear these gentlemen should be destroyed, exterminated mercilessly as enemies of the working class and enemies of our country."

ACCORDING to a survey made for the Corn Belt Farm Dailies, an increasing share of domestic meat requirements is coming from European countries and Canada, at the expense of American live stock producers.

Importations of pork from Poland early in March were running at record high levels, while increased shipments were unloaded at New York from Denmark, Lithuania, Italy, Hungary, Holland, Germany, Estonia, Czechoslovakia, Canada, and Argentina. The United States in normal times supplies Europe with meat, the farm papers pointed out. "It must be obvious that through restricted production and reciprocal tariff agreements we have adopted policies in this country that have opened our doors to the importation of meats in substantial volume," the survey commented.

THREE famous Americans, with their aides, will represent the United States at the coronation of King George VI of Great Britain in Westminster Abbey May 12. They were selected by President Roosevelt and are: James W. Gerard, former ambassador to Germany, special ambassador; Gen. John J. Pershing, commander of the A. E. F. in the war, and Admiral Hugh Rodman, U. S. N. retired, special representatives. Curtis Bok of Philadelphia will be secretary of mission, Col. James L. Collins will be aid to Gen. Pershing, and Commander Frank E. Beatty will be aid to Admiral Rodman. The battleship New York, flagship of the Sixth battle squadron with the grand fleet in British waters during the World war, will participate in the international naval review off Spithead on May 20.

THREE New Deal acts of legislation were upheld by the Supreme court in decisions that indicated that tribunal was becoming almost liberal enough to suit the administration. The decision, read by Justice Stone and was unanimously. The third and most significant was rendered by five of the justices, with four dissenting. This last opinion was given in the case of the Washington state law establishing a minimum wage for women and the court reversed its position taken a year ago in upsetting similar legislation passed by the New York legislature. Justice Owen J. Roberts had swung over to the other side, but Justices Sutherland, Butler, McReynolds and Van Devanter dissented from the present judgment, declaring that "the meaning of the Constitution does not change with the ebb and flow of economic events." This was a slap at the majority opinion which was read by Chief Justice Hughes.

The court unanimously upheld the provisions of the railway labor act requiring railroads to engage in collective bargaining with their employees for the purpose of settling labor disputes. The opinion was read by Justice Stone and was closely studied by leaders of the administration who hoped to glean from it an indication of what the court might decide concerning the Wagner labor relations act, now in litigation. The Wagner act does not apply to railway workers. The decision was handed down in the case of the Virginian Railway company and upheld a ruling by the Fourth circuit court of appeals directing the company to engage in collective bargaining. The Supreme court also upheld the constitutionality of the new Frazier-Lemke farm mortgage reorganization act. The decision, read by Justice Louis D. Brandeis, whose opinion condemned the earlier Frazier-Lemke act, was unanimous. The law was passed to replace a similar statute which the court held unconstitutional in the spring of 1935.

SENATORS, some fifteen in number, who have not committed themselves on the President's bill to enlarge the Supreme court, are earnestly trying to bring about a compromise that would enable them to go along with Mr. Roosevelt without laying themselves open to charges of supporting a plan to pack the court. Several compromise measures have been devised, one of which is that of Senator Hatch and a member of the judiciary committee that is holding hearings on the administration bill.

Mr. Hatch proposes to modify the President's bill so that no more than two additional justices could be appointed in any one year. Furthermore, it would provide for a flexible court with a membership varying between fifteen and nine judges. The additional appointments, made upon the failure of justices past 70 to retire, would not become permanent increases. They would be offset by failure to fill an equal number of vacancies caused by subsequent retirements. Further witnesses for the opposition, appearing before the judiciary committee, included Dr. Irving Griswold, professor of constitutional law at Harvard; Dorothy Thompson, prominent journalist; Walter F. Dodd of Chicago, constitutional authority, and Dean Henry M. Bates of the Michigan university law school.

Many Cash Crops Found in Forests

Farm Woodlot Will Produce Many Trees, Bushes, Berries of Value.

By Robert B. Parmentier, Extension Forester, Massachusetts State College, WNU Service.

"God in the hills," a favorite line in by-gone melodramas, might well apply to today's farm woodlot. Besides saw timber and cordwood, the farm woodlot offers many other cash crops to the enterprising owner.

Many farmers are getting annual incomes from Christmas trees. They also sell "press brush," or tip ends of spruce and balsam which are clipped off and baled for manufacturers of Christmas greens and decorations. Some men have sold fern-picking rights on their land, the buyers using them as decorations.

There is always a market for tree seeds. Acorns, walnuts, butternuts, black walnuts, and cones from spruce, pine, or balsam may be gathered and sold in the fall. Bean poles and pea brush are always in demand, and poles and stakes for roping up heavy branches of apple trees often find a sale. Much of this material can be gathered while making thinnings in the woodlot.

Fence posts and rails are always useful on the farm, and taking them from the woodlot means quite a saving over a period of time. Novelty items made from gray or white birch, twig baskets filled with white pine sprays and cones, red berries, and dried grasses also add to the income. Decorative buttons made from walnuts or butternuts can generally be sold to novelty shops.

Maple syrup and sap need only be mentioned. Everyone knows the value of a good sugar bush. Cattle bedding made from trash wood by cones treated chemically to produce colored flames in the fireplace, and white birch for fancy fireplace wood are some of the other forest by-products.

A little scouting around for a market will often lead to new uses for old forest products, and every new outlet means more money from the farm woodlot.

Spruce and Fir Among Best Windbreak Trees

Norway spruce and Douglas fir are the most satisfactory trees to use as windbreak plantings, according to J. E. Davis, extension forester, College of Agriculture, University of Illinois. A good windbreak is easy to have, its success depending upon location, soil preparation, choice of trees, spacing, protection and care. A windbreak will be effective on the leeward for a distance eight times its height. Since the trees average 40 feet in height, it is best not to have the buildings nearer than 50 feet nor farther than 320 feet from the trees. If closer than 50 feet, snow drifts may form on buildings, and dead-air pockets may cause excessive heat in summer.

The windbreak affords best protection if built in the form of an inverted "L" on the west and north of the farmstead. Plowed preferably in the fall, the land may be fitted in the spring. At least 4-year old transplanted trees are recommended and even larger trees will assure more success.

Silage for Young Cattle Silage in large amounts can be used to feed thin common-to-medium yearlings or older cattle which are to be marketed this spring, according to E. T. Robbins, live stock extension specialist, College of Agriculture, University of Illinois. Silage with or without dry roughage is combined with three or four pounds of cottonseed meal or soybean oil meal for each head each day by some experienced finishers of butcher cattle. Corn is added during about the last two months, and the cattle are sold when about two-thirds fat.

Agricultural Notes Records show that the corn borer is moving farther southward. California's 1936 potato crop exceeded last year's by 500,000 bushels. Once a part of a huge swamp region, Putnam county, Ohio, is now an important agricultural area. More than 900 varieties of cabbage are now grown in the United States. The proportion of grain-fed cattle in the 1937 slaughter supply probably will be smaller than in 1936. One broken tile may make a whole line of drainage worthless. Former 4-H club members comprise 34 per cent of home economics students and 39 per cent of all agricultural students in courses at Ohio State university. Too many high producing cows have "off years"; it pays in added amounts of milk and fat produced during a lifetime if special effort is made to have such cows dry at least eight weeks before calving.

AROUND the HOUSE Items of Interest to the Housewife

Cooking Vegetables — A small piece of butter added to the water in which vegetables are to be cooked will prevent them from boiling over.

Flavoring Gravy — Half milk and half water makes the best colored and best flavored gravy.

Suede Shoes — Rain spots can be removed from suede shoes by rubbing with fine emery board.

Boiling Cabbage — When you cook cabbage, put a small handful of breadcrumbs tied in muslin into the pan. The bread absorbs all the bitter juices and makes the vegetable more digestible.

Worn Socks — Children very often get enormous holes in the heels of their socks. This is often due to the lining of the shoe which has worn rough. If the ragged bits are cut off and the inside of the shoe covered with adhesive tape, many a large "hole" will be prevented.

Sausage and Fried Apples — Pan broil the required number of small sausages or cakes of sausage meat and as soon as the fat collects, add as many halved, cored and unpeeled apples as required.

Ironing Shirts — Soft collars attached to shirts should be ironed on the right side first, then on the wrong side. This prevents wrinkling the collar.

Baking Potatoes — Before putting potatoes in the baking-tin, stand them in boiling water for a few minutes, then drain on a clean cloth. They will cook more quickly and taste better.

Making a Footstool — Do you know that you can make unique footstools out of the single spring seats of an old automobile? Cover the old seat with upholstery and attach castors at the four corners. This will give you a comfortable seat or footstool for your summer cottage.

Cocoa Egg Cake Filling — White of one egg; one cup icing sugar; two teaspoons cold water; four tablespoons cocoa; half teaspoon vanilla. Beat white of egg until stiff and dry. Mix cocoa and sugar, add cold water. Add gradually to egg white until thick enough to spread.

Washing Embroidery — Do not wring embroidery after washing. Press out as much moisture as possible between the folds of a towel, then spread on a towel or blotter to dry, face up.

Ask Me Another A General Quiz

- 1. Who are the Pariahs? 2. What measure does "dm." indicate? 3. Where was Libby prison? 4. Why are some trees called deciduous? 5. What was the origin of saluting? 6. When was the first wireless distress signal used at sea? 7. Which is the world's longest railway tunnel used by passenger trains? 8. When is a person taller, when lying down or standing up? 9. Is it illegal for a United States' President to take the oath of office on Sunday? 10. When was the first silver dollar coined? 11. What is the meaning of cover charge? 12. From where does Troy weight get its name?

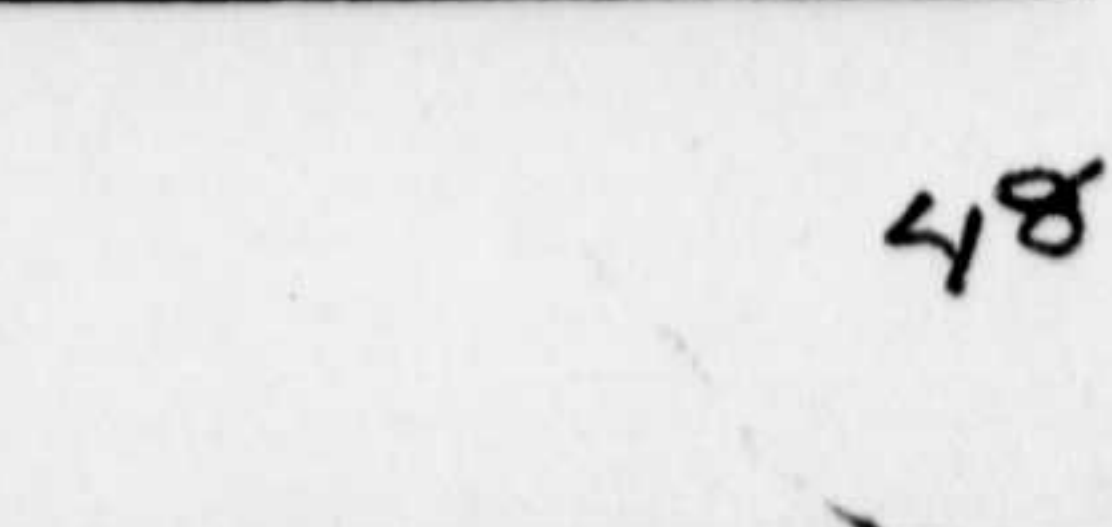
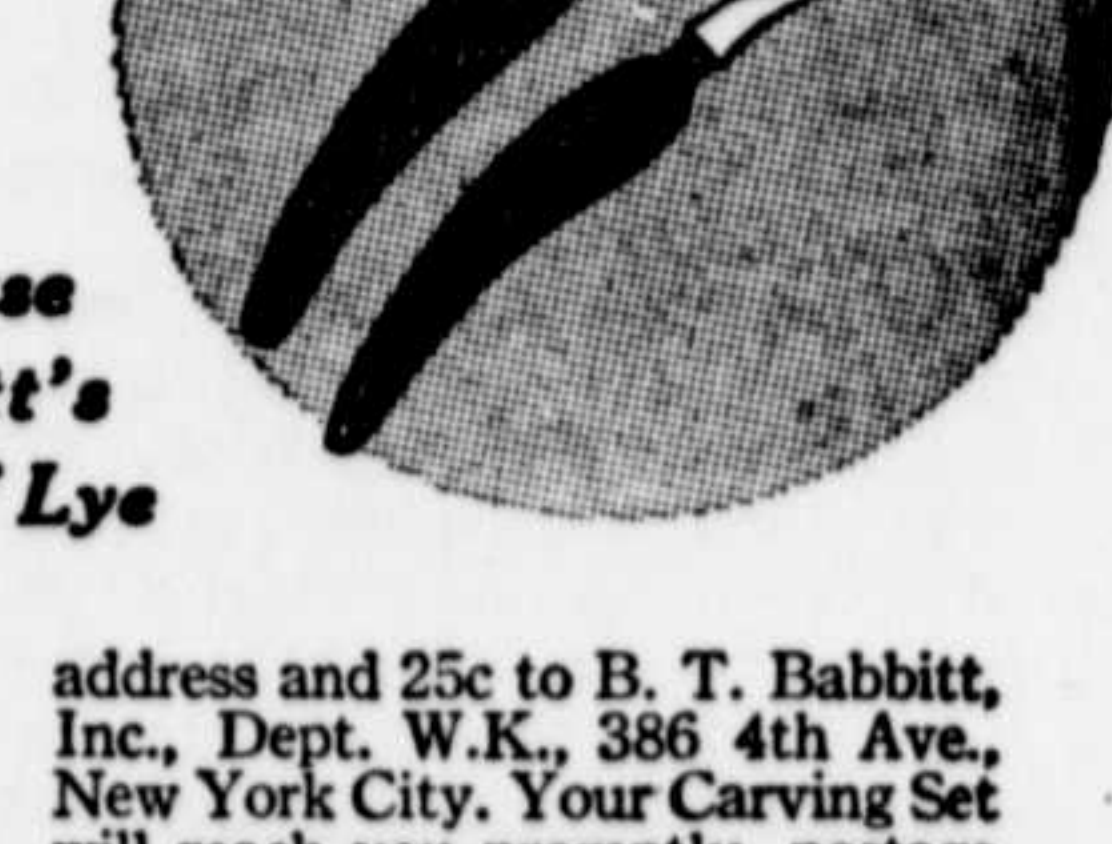
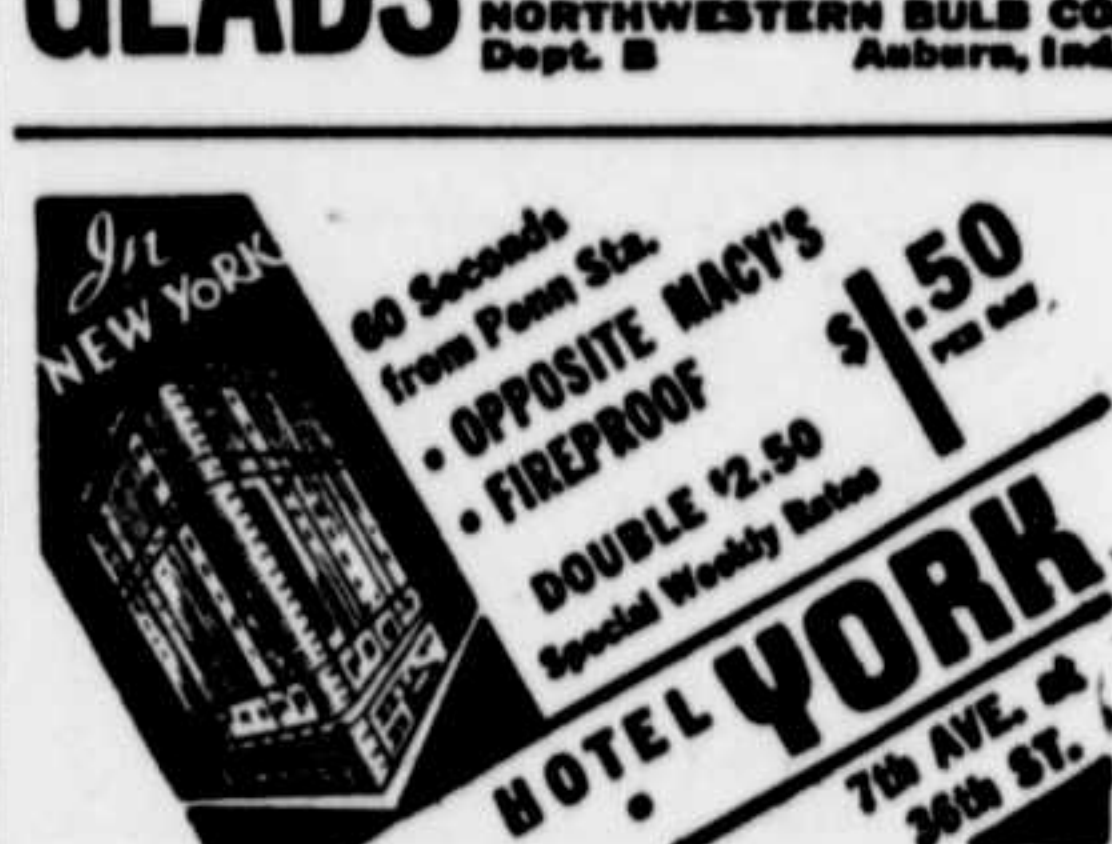
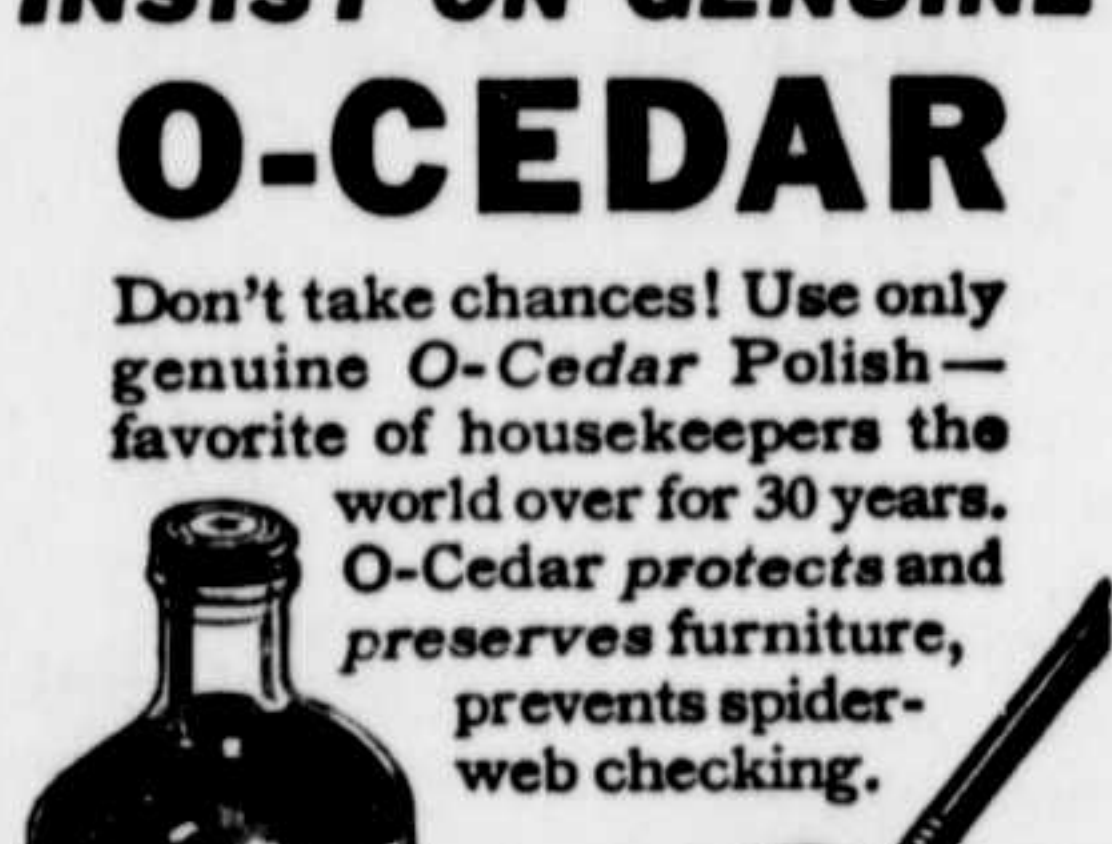
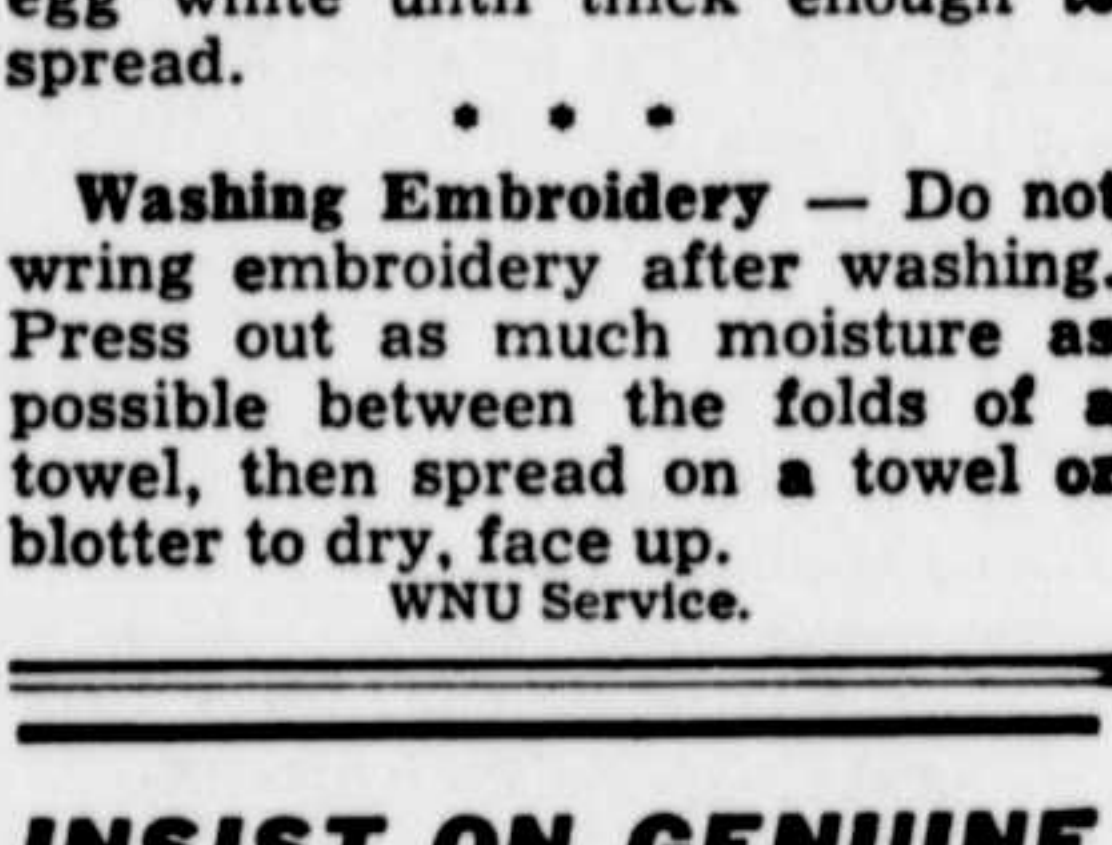
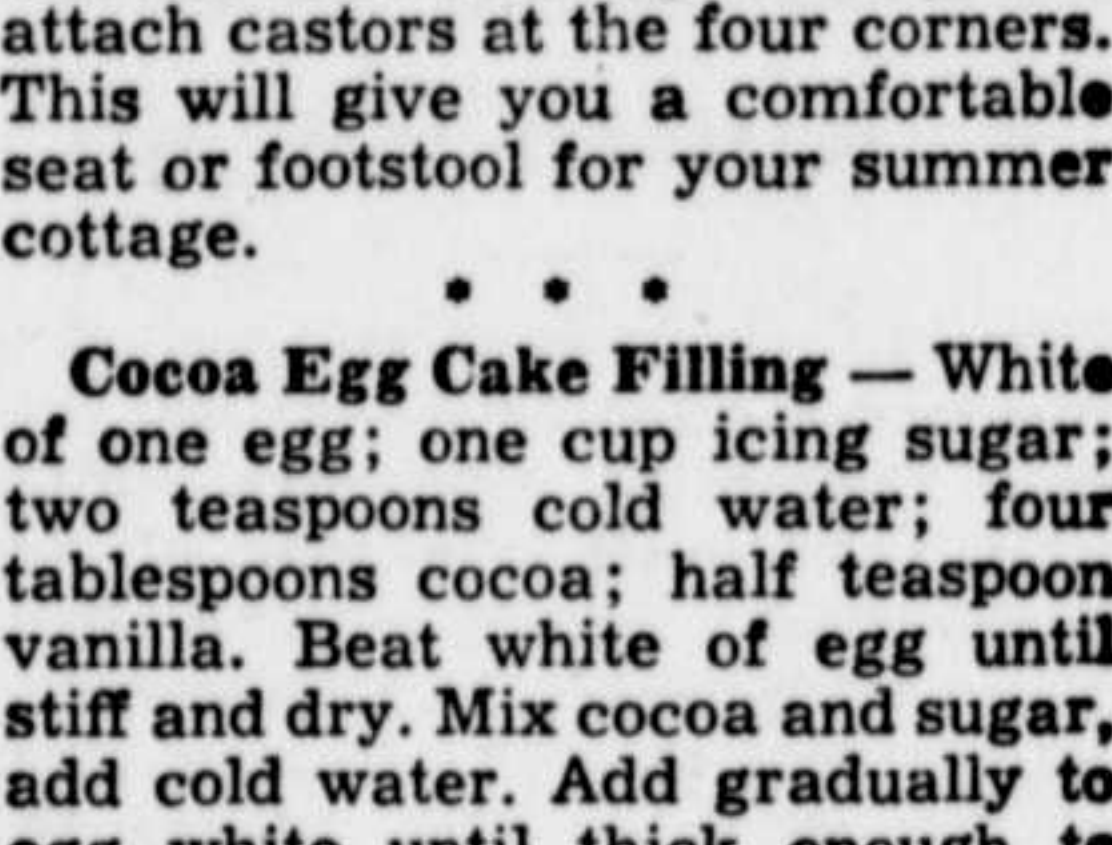
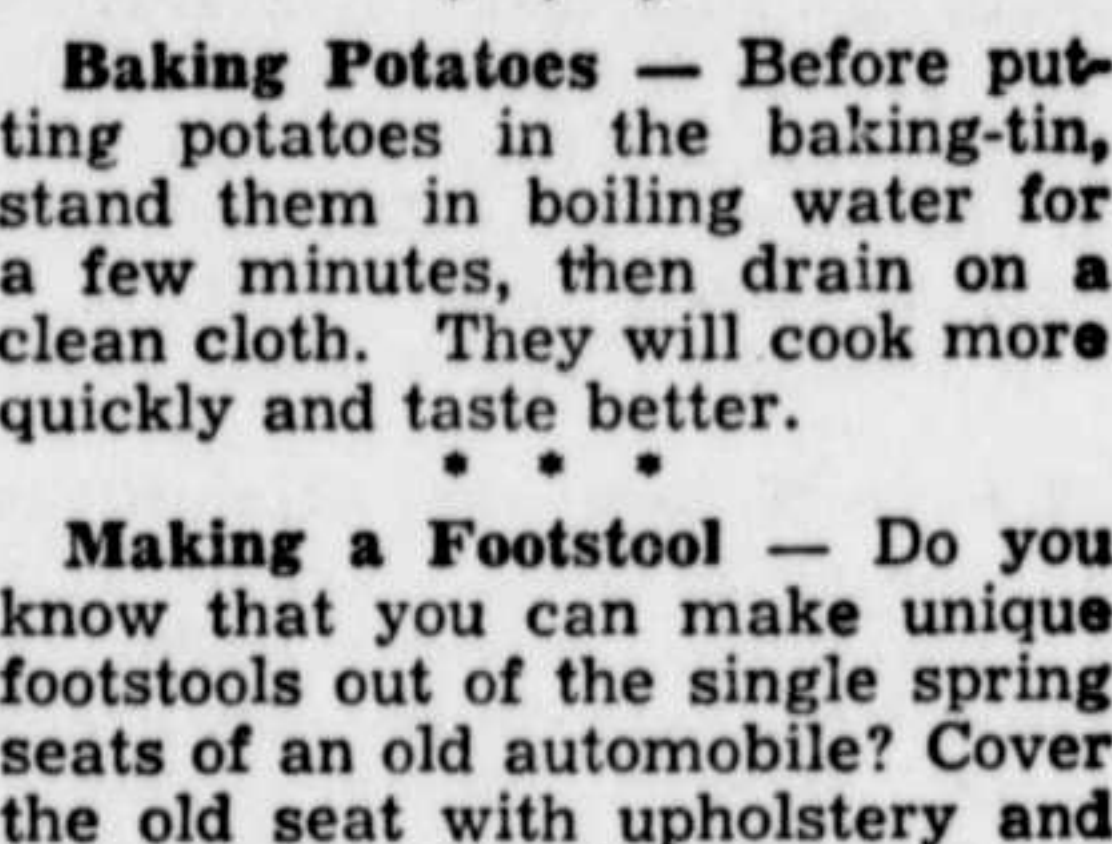
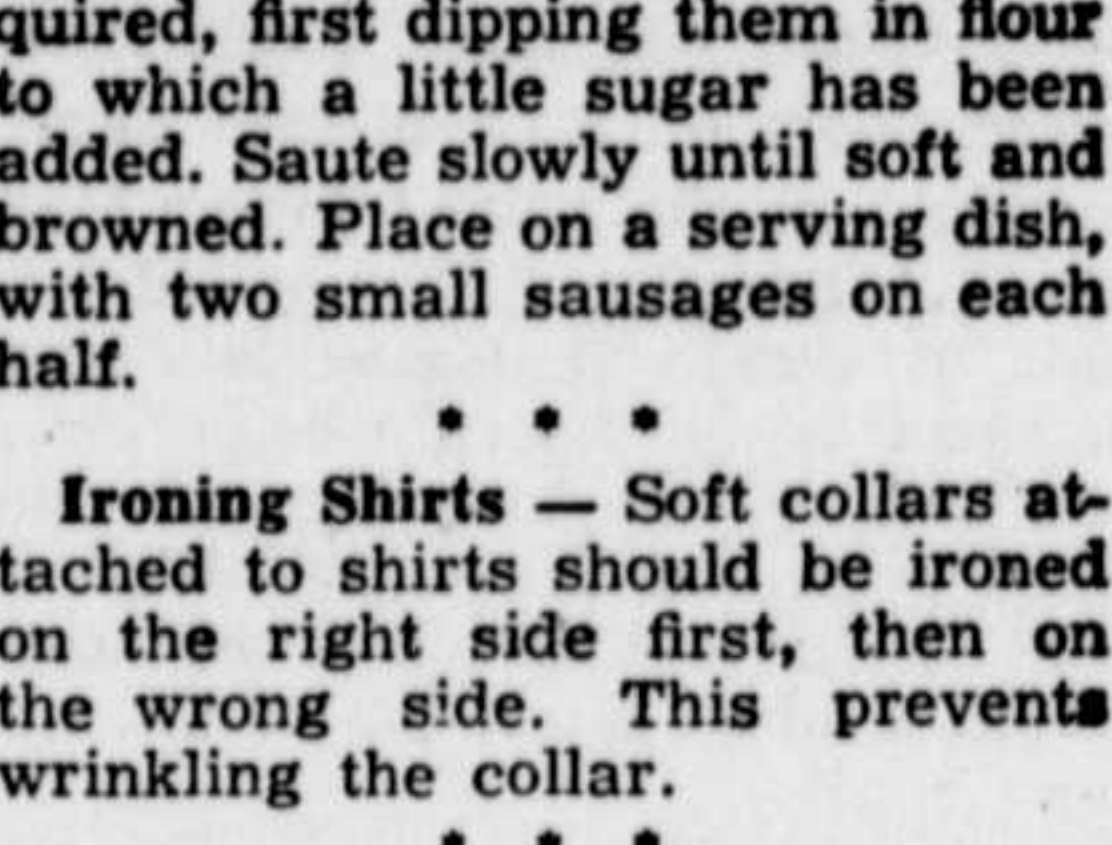
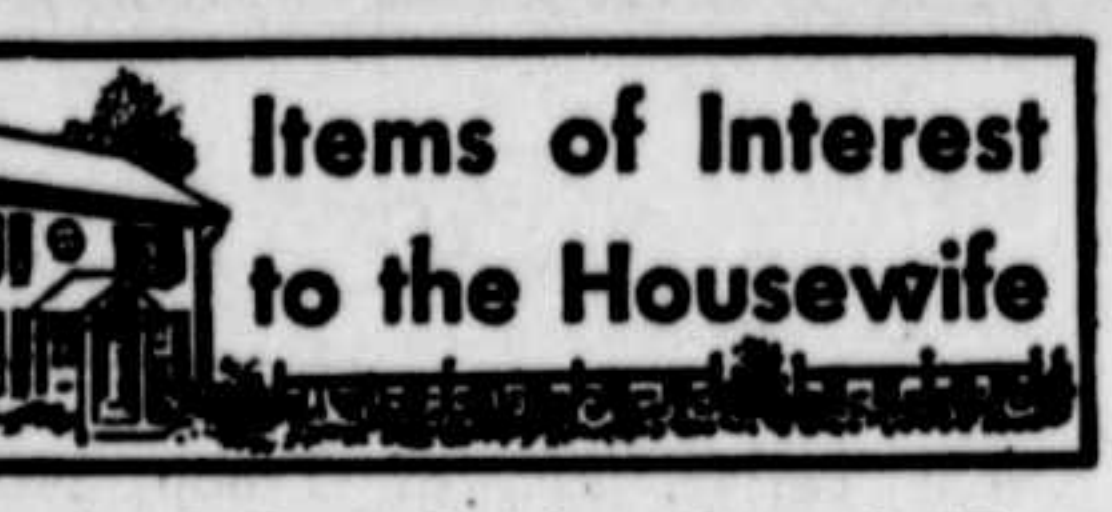
- Answers 1. Members of an aboriginal non-Brahmanic race of India; hence "outcasts." 2. Decimeter. 3. Richmond, Virginia. 4. Trees which are not evergreens are called deciduous. It is derived from the Latin "de," meaning down, and "cadere," meaning fall; and refers to the falling of the leaves. 5. It is said to date back to the Borgias, when inferiors, coming into the presence of their superiors, raised their hands to show no dagger was concealed. 6. January 23, 1909, when White Star liner "Republic" collided with the "Florida." It was not SOS but CQD. 7. Golders Green to South Wimbledon, London. Total length 16 1/2 miles. 8. When lying down. As much as an inch has been noted. 9. No. President Wilson did so. 10. In 1794. 11. A charge made for the privilege of occupying a place at a cafe or restaurant. It does not include the cost of the food consumed. 12. From Troyes, France, where the weights were used in the Middle Ages.

PLEASE ACCEPT THIS Exquisite \$1.00 GAME CARVING SET

for only 25c with your purchase of one can of B. T. Babbitt's Nationally Known Brands of Lye

This is the Carving Set you need for steaks and game. Deerhorn design handle fits the hand perfectly. Knife blade and fork tines made of fine stainless steel. Now offered for only 25c to induce you to try the brands of lye shown at right. Use them for sterilizing milking machines and dairy equipment. Contents of one can dissolved in 17 gallons of water makes an effective, inexpensive sterilizing solution. Buy today a can of any of the lye brands shown at right. Then send the can band, with your name and address and 25c to B. T. Babbitt, Inc., Dept. W.K., 386 4th Ave., New York City. Your Carving Set will reach you promptly, postage paid. Send today while the supply lasts. OFFER GOOD WITH ANY BRAND SHOWN BELOW

TEAR OUT THIS ADVERTISEMENT AS A REMINDER



483