

Scenery—

An Undeveloped Source of Revenue for the Farmer

By T. D. GRAY
Extension Landscape Architect, West Virginia University



Superb fishing offers a real attraction to the tourist in the "Smoke Hole," Pendleton County, West Virginia, on the South branch of the Potomac.



With the development of a system of good roads, West Virginia has become accessible to everyone who follows the "rubber-tire" trail. Hard-surfaced roads steadily push the frontier back and sections which were backwoods, only a short time ago, are easily reached by automobile in a few hours today.

The Midland Trail, North-South Highway, Seneca Trail, and the Northwestern Turnpike are known far and wide and thousands of motorists follow them every day.

Hard-surfaced roads lead to, and pass through in many instances, some of the most alluring, fascinating, rugged, and ever-changing scenery that can be found East of the Rocky Mountains. One could not hope to find a more fascinating view than that of the New River Gorge, as seen from the Midland Trail, U. S. Route 60, or a more rugged and picturesque scene than this same gorge presents when viewed from the famous Hawk's Nest just to the North. Through this beautiful gorge the New River flows 800 feet below the crest along the highway, and 1,292 feet below Hawk's Nest still farther up the mountainside.

There is no more alluring spot to be found anywhere than that of the "Smoke Hole" in Pendleton county, midway between Petersburg and Franklin, just off of U. S. Route 220. Leaving the main highway and entering this area, for three or four miles, one cannot help but be fascinated by the charm of rugged peaks, roaring cataracts of the South Branch of the Potomac, babbling brooks, wooded mountainsides, and solitude broken only by the wind singing through the trees and the restless water of the mountain streams making playful music.

What a haven for those tired from worry and overwork!

Example in Other States

Search where you will, you will not find Nature grandeur more completely restful anywhere than in the scenery along the Seneca Trail, as it follows closely the backbone of the Alleghenies. To list all of the many and varied scenic attractions within the state of West Virginia would require pages of description, because most of it is clothed in natural beauty, when unspoiled and not mutilated by the sometimes careless hand of man.

Thousands of tourists are visiting West Virginia each summer in ever-increasing numbers.

FRUITS-VEGETABLES WANTED!

In Truck and car lots
High Market Prices. Quick Sales.
Financial responsibility assures full daily returns
ESTABLISHED 30 YEARS
5 locations and sales forces to serve shippers.
Our market quotations are not exaggerated to induce shipments. Write or wire for them.

SCHLEY BROTHERS
7th, Lehighville, Pa.
15 East Camden St. BALTIMORE, MD.

creasing numbers. These tourists are a potential source of revenue to all parts of the state, and no one group has greater possibilities of gains from this source than the farmers of West Virginia. This fact is self-evident to any person who has visited Pennsylvania, New York and the New England states. Everywhere through the rural sections in these states, one sees farm homes with neat signs advertising "Chicken Dinners" or "Rooms for Tourists."

Roadside stands with vegetables and fruits in season from the farms are common on all thoroughfares throughout the Northeastern states. Some of the farmers



Looking North toward the mouth of Seneca and Roaring Plains, Monongahela National Forest, W. Va. (Photo by U. S. Forest Service).

in these states sell practically all of the surplus they produce in this manner. Some farmers in West Virginia have begun to capitalize on this source of revenue, but it is, as yet, virtually untapped.

Many farms in West Virginia are too rough or too steep for economical farming operations. These rough farms, however, have good locations for small cabins or cottages that can be rented to tourists at a good profit. The tourist is glad to find a place of this kind and is willing to pay a fair and just price for the use of the cabin and services he obtains.

Remunerative Crop

That the tourist crop is a remunerative one to other states is shown in a study of reports from those states that are catering to and advertising for tourists. Pennsylvania estimates the cash value of tourists at \$185,000,000 per year, and yet no one thinks of Pennsylvania particularly as a tourist state, as one does of California and Florida. New England and Canada report that the tourists' trade is their largest single cash crop. It is reported that the Shenandoah Valley derives \$15,000,000 annually from its tourist crop. Every other section or state catering to tourists reports large revenues from this source.

For the farmer to derive his full return from scenery as a source of revenue, it is necessary that he set his trap and lure with attractive bait. Neat signs should be displayed that advertise what he has to sell whether this be rooms for tourists, chicken dinners, fresh fruits and

vegetables, or what not. Ugly untidy roadside markets are no more likely to attract trade than the ugly untidy country store.

The certified Mountain State tourist homes supervised by the Agricultural Extension Service of West Virginia University, serve to help the farmers reap their just share of income from the tourist crop, but they are not the only means that await the alert land-owner to obtain a return from his holdings. Farmers in some areas of the state have glimpsed the possibilities of tourist trade.

The Wilson farm along the Midland Trail near Huntington is an example of

ity in making the state attractive by keeping his home neat and well-painted and the out-buildings pleasing in appearance, through the use of paint or whitewash. He will thus help to make a good impression and induce the traveler to return.

Few people of the state seem to know or appreciate the fact that two national forests, the Shenandoah National Forest and the Monongahela National Forest largely in West Virginia. In this state, the Monongahela Forest includes about 250,000 acres and the Shenandoah about 50,000 acres.

These forest areas have real potential value to West Virginia farmers as lures to the tourists. They are now being developed and advertised to the public for recreational purposes. Some persons seem to have the idea that because they are forest areas they are to be used for forestry purposes only. This is decidedly not the case, because the Forest Service has a definite principle of developing its forest areas so that they will return the maximum benefits to the people.

If areas in the forest are more valuable for recreation than for the production of forest products, such areas are set aside principally for recreational purposes. Foresters who have visited every national forest in the East, state that the Monongahela National Forest is the equal in scenic attractiveness of any forest East of the Rocky Mountains. The development of these forests for recreation will attract thousands of tourists. Indeed, no one who has not seen these areas can appreciate the real charm and beauty that lie within their confines.

Good Yearly Crop Assured

Scenery is one crop not restricted by any form of production control program, and of which there is no danger of having an over-production, even though a good crop each year is virtually certain. Likewise, the demand is not affected by a bountiful supply, and those who avail themselves of the opportunity to capitalize on the beauty that is all around them are practically assured of a brisk demand and a ready market at good prices.

Every road leading into the state brings new buyers who are eager to see and enjoy West Virginia's unsurpassed scenic attractions. The potential value of the state's yearly offering of Nature's beauties is not surpassed by that of any other agricultural enterprise, and alert country folk will not only adjust their activities so as to share in the returns afforded, but will make a constructive effort to further enhance this great natural resource of the state.

Help to Make State Attractive

Not only should the farmer expect a return from the tourist crop, but he should also assume a definite responsibility.

Tourists bring many thousands of dollars into West Virginia every year, and will bring and spend more if encouraged to do so.



Teaching Biddy To Lay and Pay

BY A. B. BRYAN

Seven Oaks poultry farm, two and one-half miles from Spartanburg, S. C., is the laboratory in which T. L. Green and his son, O. H. Green, have found diverting interest and satisfying profit in working out scientific poultry production practices that led to heavier production of large eggs. Incidentally, Seven Oaks farm has become the center of a better-poultry community through the sale of hatching eggs and baby chicks to neighboring farmers.

It is 10 years since T. L. Green, growing tired of his grocery business in town, bought 16 1-2 acres of Piedmont rolling land a few miles from town, equipped it with poultry farm needs and conveniences, and started out with a determination to produce egg layers that would be profit payers.

Skillful Breeding

For seven years, Seven Oaks farm has been the home of 2,000 or more large White Leghorns that average 175



This hen laid 313 eggs in her pullet year.

or more eggs each per year. Aiding in the good work, O. H. Green, son of T. L., graduate of Clemson, the state agricultural college has joined his trained efforts with the father's to make the best better.

The Greens are frank to ascribe their success to superior breeding stock, careful management according to advice of poultry specialists, and trap-nesting.

"Eight or ten years would be too short a time to breed up a flock to lay as our hens lay if we had started with poor run-down stock; but we didn't," said the senior Green. "We started with the best obtainable by purchasing from a breeder who was a constant importer of high-producing birds. We then ordered 12 pedigreed males. The results were so favorable we have had for several years hundreds of hens that produce 200 to 300 eggs per hen yearly, and they are some of the biggest White Leghorn hens in the South.

Trap Nests Don't Lie

"Without the aid of trap-nests we could have done little. The only way to tell how many eggs a hen lays is to trap-her hen and count the eggs. Which hens are laying of-colored, badly shaped, or pee-wee eggs can be told in no other way.

"We weed out hens that lay small eggs. We have hens that produce eggs weighing 26 ounces per dozen. Our pullets, because of their excellent body weight and development at maturity, start off by laying large eggs."

Sales have spread to a half dozen or more states, with never a dissatisfied customer. The premium on eggs and chicks sold for breeding has been a big factor in the profit made at Seven Oaks.

CLASSIFIED DEPARTMENT

20c A WORD—CASH-WITH-ORDER

Count each initial and whole number as one word. Orders must be received at Asheville on or before the 10th of month preceding month of issue.

THE STATE FARMER
Scenic Bldg., Asheville, N. C.

BABY CHICKS

CHICKS THAT SATISFY VITALITY AND LIVABILITY ASSURED
Blood Tested—Greenboro Hatched, Short Shipping—Stronger Chicks.
100% Live Delivery

Shipments Prepaid	50	100	500
AAA Hollywood Wh. Leghorns	\$2.25	\$2.95	\$47.50
White Leghorns (English Type)	4.50	3.50	40.00
Reds, Orpingtons, Wyandottes	4.50	8.50	40.00
Barred Rocks and White Rocks	4.50	8.50	40.00
Heavy Mixed	4.00	7.00	35.00

Special Prices on Large Shipments.

All Chicks carefully selected. Shipping in large, oversized boxes guarantees arrival in good condition—no danger of overheating enroute.

CAROLINA HATCHERIES, Dept. M, 221 East Sycamore Street, Greensboro, N. C.

300 MARCH 300-EGG DOUBLE PEDIGREED MATING HANSON COCKERELS \$4.00, 500 300-egg double pedigreed sire, and four generations high pedigreed females, cockerels, 500 pullets April \$2.00, May hatched \$1.50. Big fowling twelve weeks pullets 75c. Sixteen weeks 90c. Laying \$1.25. Yearling hens \$1.00. Half Cash, half C.O.D. LEG-HORN LAND, Box 42, Stuart, Va.

C.O.D. Rocks, Reds, Wyandottes, Brown, White Leghorns, Heavy Mixed, \$4.75 per 100, plus immediate shipment. Write to: MOUNTAIN HEALTHY HATCHERIES AND POULTRY FARMS, MT. HEALTHY, OHIO.

REDUCED PRICES ON OUR MATED BRED CHICKS. They cost you less and every chick is covered by livability guarantee. You are assured more profits. Just try them. Master Bred Single Comb Reds, Barred, Buff, White Rocks, Buff Orpingtons, Silver Laced, White Wyandottes \$3.95, 100—\$6.25, 500—\$14.25, 1000—\$47.50. Large type White Leghorns, Brown, Buff Leghorns, Anconas, Buff, White Minorcas also Heavy Assorted 100—\$6.45, 500—\$31.75. Jersey White, Itak Giant, New Hampshire, Brahmas, Australorps \$7.25. Assorted \$5.40. Seconds \$3.50. Get prices on Baby Pullets and Cockerels. We pay postage. Can ship C.O.D. We guarantee 100% live arrival and refund any you lose first two weeks half price. Catalog free. Hatching every week. Order direct from ad. CLAYTON VALLEY POULTRY FARM, Box 85, Ramsey, Indiana.

PLANTS, SEEDS, ETC.

HARDY ALFALFA SEED \$1.40. Grimm \$2.50. White Sweet Clover \$2.50. All 60 lb. bushel. Track Concordia. Return seed if not satisfied. GPO. HOWMAN, Concordia, Kansas.

STUDY CABBAGE PLANTS Postpaid, 200—60c; 400—\$1.00. Expressed 1,000—\$1.00, 2,000—\$4.00. MELLINGER'S, North Lima, Ohio.

MILLIONS Cabbage, Onion, Collard Plants: Best varieties, 1,000—\$1.00, 10,000—\$6.00. Satisfaction Guaranteed. R. R. LANKFORD, Franklin, Va.

PHOTO FINISHING

KODAK ROLL FILM DEVELOPED AND PRINTED 25c. Heavy weight enlargement from film: size 5x7, 25c; size 8x10, 35c. Enlargements copied from picture. Size 5x7, 42c; size 8x10, 49c. All work guaranteed. WILLIAM DANIEL'S STUDIO, S.E., Raleigh, N. C.

ATTENTION! IMMEDIATE SERVICE TO ALL. 8 SUPERIOR prints and two BEAUTIFUL NEVERFADE enlargements, 25c. Work Guaranteed. FOX PHOTO SERVICE, LACROSSE, WISCONSIN.

TWO BEAUTIFUL DOUBLE WEIGHT PROFESSIONAL ENLARGEMENTS, 3 Guaranteed Never Fade Prints, 25c coin. CENTURY PHOTO SERVICE, LaCrosse, Wis.

ROLL DEVELOPED, Two Prints each and two free enlargement coupons 25c. Reprints 1c each, 100 or more 1c. Christmas Cards 60c. Dozen. SUMMERS' STUDIO, Unionville, Missouri.

ROLL DEVELOPED, PRINTED 15c. Reprints 1c. HOWARD'S, 2347 JARVIS, Chicago.

ROLLS DEVELOPED, eight Quality prints 25c. Reprints 3c. Work processed by Eastman Standard Formulas. NORTH STUDIO, North, S. C.

SPECIAL—Enlargement with roll developed and printed 25c. Reprints 10 for 25c. KEYSTONE PHOTOS, 1125 N. Keystone, Chicago, Ill.

ROLL DEVELOPED, 8 Never-Fade Velox Prints, One ENLARGEMENT 25c. JACK HAHBIT CO., Spartanburg, S. Carolina.

ROLLS DEVELOPED—TWO BEAUTIFUL Double Weight Professional Enlargements and 3 guaranteed never fade Perfect Tone prints 25c coin. RAY'S PHOTO SERVICE, LaCrosse, Wisconsin.

FURS

LET US TURN YOUR WOOL INTO BLANKETS. Tan and make up your Furs and Hides for you. FUR TANNERY, Mineral, Virginia.

DOGS

COON, FOX, BEAVER, RABBIT and Combination Hounds, Pointers, Setters, Cheap Trial. Literature free. DIXIE KENNELS, B. 64, Herick, Ill.

FARMS

ESTATES, Farm Country in Northern Virginia. Convenient to Washington. BUELL FARM AGENCY, Herndon, Fairfax County, Virginia.

MACHINERY

MAKE MONEY GRINDING with our Wood Frame STONE, HURR GRET MILL. Best for Grinding bread meal. Low Factory Prices.

AMERICAN MILL MANUFACTURING CO. Sales Manager, Winston-Salem, N. C.

WEED BURNERS

NEW AEROL WEED BURNER positively kills all weeds—including stalks, seeds, roots, etc. other uses. \$9.99 in use. Write for FREE Illustrated Folder No. 21. AEROL, West New York, New Jersey.

ELECTRIC FENCES

ELECTRIFIED FENCES save 50%. Battery or power current operated. 30 days trial. Information free. ONE-WIRE FENCE CO., P.O. 74, Whitewater, Wisconsin.

PATENTS OR INVENTORS

PATENTS LOW COST. Book and advice free. L. E. RANDOLPH, Dept. 717, Washington, D. C.

TOMBSTONES & MONUMENTS

\$3.00 up. LETTERED, DELIVERED, GUARANTEED. Free Catalog. MARBLE GRANITE FACTORY, A-76, Oneco, Fla.

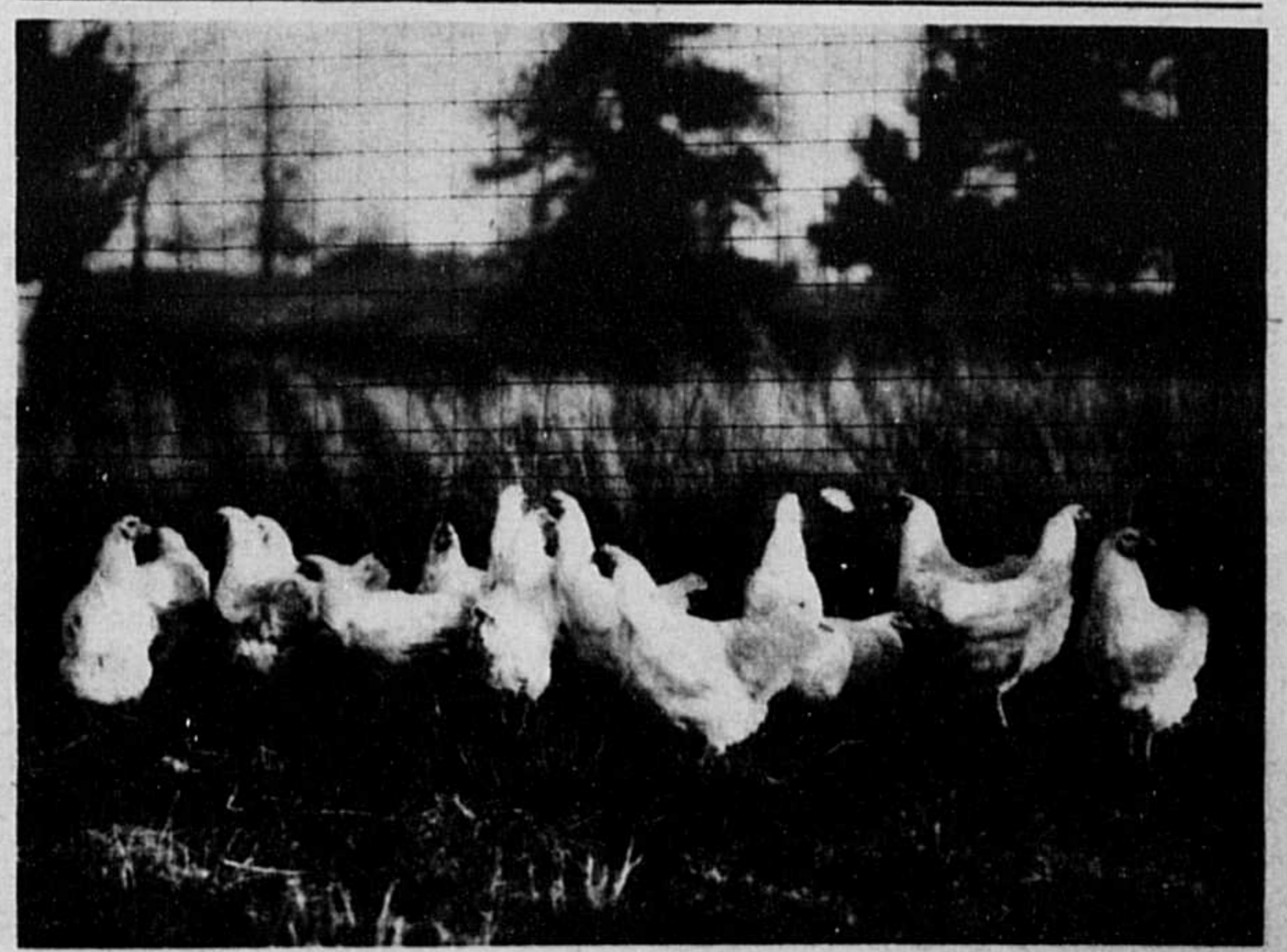
EDUCATIONAL

PREPARE NOW FOR A BUSINESS CAREER! Learn Gregg shorthand, bookkeeping, correspondence, salesmanship, typewriting, and other important subjects during spare time. Lessons especially prepared for home study by national authorities. Graduates highly recommended. Write today for information and new illustrated catalog. "Business Training Offers Greater Opportunities." COMMERCIAL EXTENSION, Department 4H, Omaha, Nebraska.

MISCELLANEOUS

PANS—4 in. 32 volt for farm light plants. Direct from manufacturer \$4.98 post paid. ACE ELECTRIC COMPANY, Columbus, Indiana.

WANTED—Hear from parties interested gold or silver ore, buried or hidden treasures. Bergman's Instrument \$5.00. Particulars free. HENRY BERGMAN, Box 300D, Springfield, Missouri.



4776