

We beg to announce to the public that we have acquired the agency for

THE GRANT SIX

The Aristocrat of Moderate Price Pleasure Cars, Embodying All the Features and Comforts of The High Priced Automobiles

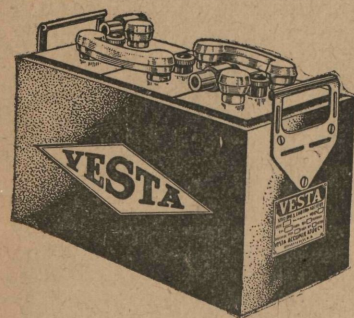
THE YORK ROAD GARAGE

TOWSON, MD.

Telephone Towson 365-J for Demonstration

7-17-52w

Telephone, Mt. Vernon 1293



We Recharge and Repair Any Make Or Size Battery

The REUS ELECTRIC BATTERY CO.

150 West Royal Avenue, Baltimore, Md.

SOLD EVERYWHERE

FOUND TO BE BEST



BOTTLED BY

The Baltimore Coca-Cola Bottling Co.

408-10-12 N. CALVERT STREET

HAVE MUCH ECONOMIC VALUE

Official of Museum of Natural History Tells of Importance of Bats in Jamaica.

Returning recently from the island of Jamaica, in the West Indies, where he spent four months on a scientific expedition, H. E. Anthony, associate curator of mammals at the Museum of Natural History, brought back with him many fine specimens of bats, which are numerous on that and other islands in the West Indies, says the New York Times.

"The only mammals native to the island today," Mr. Anthony said, "are 20 species of bats and one species of rodent. These different bats range in size from small bats, with a wing spread of six inches, up to very large bats, with a wing spread of from 28 to 30 inches."

People in the United States, where bats are comparatively rare animals, have no idea of the variety and abundance of them in such a place as Jamaica, or of the important economic value of the bat. They are either insect eating or feed on fruits. The insect-eating variety are small for the most part, and have considerable value as insect destroyers. They feed on mosquitoes and on a great variety of winged insect life, many of which are obnoxious to man or injurious to agriculture.

AUSTRALIA HAS MUCH IRON

Engineers Report Immense Quantities Available in the Southwest Part of the Country.

Mining engineers have reported to the Australian government that immense quantities of iron ore are available at Yampi sound, in southwest Australia. The estimate puts the amount of ore available—that is, in sight above sea-level—at 97,000,000 tons. The larger quantities are on Koolan island, where the lode rises 600 feet above the water line; the lode is over 100 feet wide, and is traced for nearly four miles, but really extends right through the island. On Cockatoo island the height is 300 feet, the lode running from end to end of the island.

The quality of the ore is exceptional. There is only 1 per cent of silica present and very little sulphur. These analyses compare favorably with the best known iron deposits in the world. Newfoundland (Bell Island) ore is 51.80 per cent metallic iron, with 9.50 per cent silica. The French ores run to 57.23 per cent, the Cumberland (England) to 48.80 per cent, the Spanish (Bilboa) to 50.84, and the Algerian to a mean of about 50.

Bolshevist Stud Farm.

In the Live Stock Journal of London a correspondent relates the observations of an English horse-trainer recently escaped from Russia: "The Bolsheviks went to all the stud farms and divided the stock among themselves. The best stallion in Russia, imported just before the war at an enormous expense, was given to a peasant, who took the horse off to his village in the interior to draw his cart for a few days and then he slaughtered for food. The bolsheviks then started an improved stud farm under nationalist management. They made it up of six stallions and one mare."

PROUD OF THEIR CLIMATE

Residents of Eastern Shore of Maryland Relate Pretty Legend in Connection With It.

I went over to Baltimore to speak to a Methodist conference some time ago. I met there a splendid-looking man, with a long, flowing, white beard, and I said to him, "Do you preach in this section of the country?" He said, "Yes, sir; I come from the eastern shore of Maryland. Have you ever been on the eastern shore?"

I said, "No; I am sorry to say that I have seen every other beauty spot in this country, I believe, but I never have seen that."

"Well," he said to me, "we love that country. I have been preaching there for sixty-six years. We are a strange people and we have some strange legends, and one of them is that a long, long time ago when Adam and Eve lived in the Garden of Eden, they fell sick, and the Lord was very much disturbed about them, and he called a council of his angels and wanted to know where they should be taken for a change of air, so that they might improve."

"The angel Gabriel suggested that they should be taken to the eastern shore of Maryland, and the Lord said, 'No, no; that would not be sufficient change!'"—Franklin K. Lane in the National Geographic Magazine.

NAPKINS NOT JUST SUITABLE

But Man Meant Well, and Fortunately the Teachers Had a Sense of Humor.

The parents of the pupils of a large Indiana ward school decided to give the teachers a surprise dinner party. Accordingly they took charge of the building one evening, herded the teachers in one room and made ready the table for the dinner. But just as everybody was about ready they found that they had forgotten napkins. One of the hostesses accordingly telephoned her husband who worked in a department store. "The colors are pink and white so bring something appropriate," she told him.

He bought them—pink and white. But when they were opened they displayed storks holding in their mouths the time-honored new babies. The hostesses were horror stricken but the teachers, ready to grasp the awkwardness of the situation, led in laughter. But that man says that he will move out of that school district before there is another banquet for teachers.—Indianapolis News.

Golf by Plane.

Two modern touches in golf were introduced at the big professional tournament at Gleneagles, in Perthshire, recently.

Airplanes, bringing spectators, arrived at regular intervals from Glasgow, 47 miles away, and every competitor wore a distinctive number on his jacket to facilitate recognition.—Daily Mail, London.

What He Said.

Paul and Gerald, twins, were visiting their grandmother in a distant city. One afternoon grandmother walked to the nearby grocery, taking Gerald with her, Paul being asleep. The grocer gave Gerald an apple which he silently accepted.

Grandmother turned to Gerald and said: "Now, what do you say?" "Give me one for Paul."

A Forfeited Distinction.

"Why don't you write another letter to the paper and sign it 'Taxpayer?'" "I can't conscientiously assume the title. I'm on the delinquent list."

Why go to the heart of the city?

T. B. GATCH & SONS

Machine Shop and Garage . .

Belair Road

RASPEBURG, MD.

All kinds of Machine Work

Nothing too large
Nothing too small

KELLY-SPRINGFIELD PNEUMATIC and KELLY-SPRINGFIELD SOLID TIRES Always in Stock—All Sizes.

7-26-1y Pressed on day or night at Quarry

Wanted--Farms!

All sizes. We have cash buyers waiting.

THE BALTIMORE REALTY CO.

18 E. Lexington Street

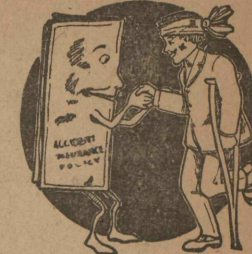
BALTIMORE, MD.

Wanted—Country Stores!

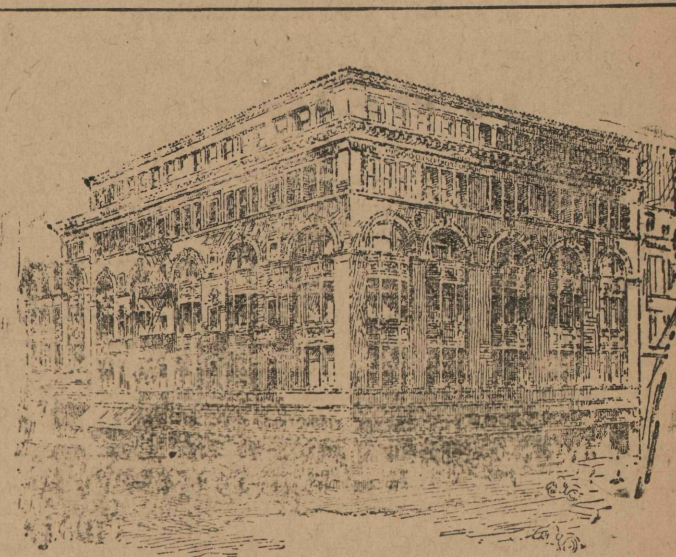
Business Strictly Confidential.

HOME FRIENDLY SOCIETY INDUSTRIAL INSURANCE

1025 LINDEN AVENUE BALTIMORE



6-1-20



Apparel For Every Member of the Family

May Be Satisfactorily Chosen at

HOCHSCHILD, KOHN & Co.

Outfitting the family can be pleasantly done, if you shop at Baltimore's Best Store.

After all have been supplied with apparel, comes the question of things for the home—and our many other sections can supply all your needs.

If you prefer to Shop-By-Mail, we will gladly furnish descriptions and prices, and take pleasure in filling your orders.

Baltimore's Best Store

HOCHSCHILD, KOHN & Co.

Howard and Leington Sts.

6

The World's Largest Tire Factory Building 30x3, 30x3½ and 31x4-inch Tires



Owners of the smaller cars can enjoy the same high relative value in Goodyear Tires that gives utmost satisfaction to owners of big, costly motor carriages.

They can take advantage of that tremendous amount of equipment, skill and care employed by Goodyear to build tires of extraordinary worth in the 30 x 3-, 30 x 3½-, and 31 x 4-inch sizes.

They can secure these tires without waiting, despite the enormous demand, because, in addition to its larger sizes, Goodyear builds an average of 20,000 a day in the world's largest tire factory devoted to the three sizes mentioned.

If you own a Ford, Chevrolet, Dort, Maxwell, or any other car using one of these sizes, go to the nearest Goodyear Service Station Dealer for Goodyear Tires and Goodyear Heavy Tourist Tubes.

30x3½ Goodyear Double-Cure Fabric, All-Weather Tread..... \$2350
30x3½ Goodyear Single-Cure Fabric, Anti-Skid Tread..... \$2150

Goodyear Heavy Tourist Tubes are thick, strong tubes that reinforce casings properly. Why risk a good casing with a cheap tube? Goodyear Heavy Tourist Tubes cost little more than tubes of less merit. 30x3½ size in water-proof bag..... \$450

GOOD YEAR

The Addition of a Selden Farm Truck Will Make Your Farm Worth More.

Farm values increase immediately when Selden Farm Trucks are installed. A speeding-up of every operation begins—more work is done daily and at a lower cost than before.

More land can be planted, bigger crops can be raised and transported to the market or shipping point quicker and cheaper. Profits are multiplied. More is accomplished with fewer men about the place. Labor shortage ceases to be a handicap when Selden Farm Trucks go to work.

Selden Farm Trucks are equipped with pneumatic tires, which assure positive traction on any road or farm surface, and provide greater comfort for the driver and maximum protection to perishable crops and live stock.

The "In-Built Quality" construction of Selden Farm Trucks is perfectly adapted to farm requirements. Considering the long service rendered by these sturdy farm models and their comparatively low first cost, they are the lowest-priced trucks manufactured today.

WRITE for further information on the Selden FARM Truck and the Selden ALL-PURPOSE FARM BODY (five different types of bodies in one). Learn how to increase the value of your farm.

Auto Outing Company

21 EAST NORTH AVENUE

BALTIMORE, MD.

Phone, Mt. Vernon 1140

Selden Motor Trucks

All Worm Drive