

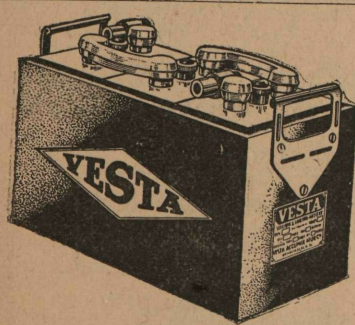
## SALE OF USED CARS

All Makes in First-Class Condition  
PRICES RIGHT  
THE YORK ROAD GARAGE  
TOWSON, MD.

GRANT AND MAXWELL AGENTS

Telephone Towson 365-J for Demonstration

7-17-52w



We Recharge and Repair  
Any Make  
Or Size  
Battery

The REUS ELECTRIC BATTERY CO.  
ELECTRIC EQUIPMENT

150 West Royal Avenue, Baltimore, Md.

SOLD EVERYWHERE

FOUND TO BE

BEST



BOTTLED BY

The Baltimore Coca-Cola Bottling Co.

408-10-12 N. CALVERT STREET

### NEW SCHEME OF GOVERNMENT WOULD MEAN "A HOUSE DI- VIDED AGAINST ITSELF."

If New Charter Is Adopted We Will Have A Board Of County Commissioners Exercising Important Powers Which A County Council And No Authority Established Has Power To Withdraw.

(Continued from Page 1, Col. 7.)  
month of November, commencing in the year eighteen hundred and ninety-one; their number in each county, their compensation, powers and duties shall be such as now or may be hereafter prescribed by law; they shall be elected at such times, in such numbers and for such periods not exceeding six years, as may be prescribed by law.

We now have five County Commissioners elected by the voters of the whole county and whose election was provided for by the Constitution. Their term of office will not expire until 1923. They are charged by the public general laws with the performance of important and responsible duties which, as we have seen, are beyond the control of this proposed new government. The County Council cannot remove them or discharge the duties imposed upon them by the Public General Laws. They constitute a local board of health for the county and are charged with the performance of certain specified duties, some of which are of vital importance to the health of the people of the county.

By the public general laws they are charged with certain duties and vested with certain powers with respect to the school budget which the law requires the County Board of Education to prepare and submit to them each year.

Under the law creating the State Tax Commission and the amendments thereto the County Commissioners are charged with very important duties with respect to the assessment of property in the county.

The Act of 1916, Chapter 629—a public general law—makes it the duty of the County Commissioners at such time as shall be ordered by the State Tax Commission to appoint such number of county assessors as shall be ordered by the Commissioners. It also imposes upon the Commissioners the duty of following strictly the plan of assessment of property formulated by the commission. It requires the Board of County Commissioners to levy an amount sufficient to pay for the assessment of property in the county upon the order of the commission. It prescribes the duties of the Commissioners in respect to the assessment and authorizes them to appoint a clerk to assist them in the performance of the duties imposed by the Act.

The Act of 1914, Chapter 841—a Public General Law—which created the State Tax Commission, provides for the appointment of a Supervisor of Assessments for the County from a list of five persons submitted to the Commissioners, and it provides an appeal to the State Tax Commission by any taxpayer from any assessment made by the Commissioners.

The nature and powers of some of the duties and powers imposed upon the Commissioners by Public General Laws, with respect to the public health, the school budget, the assessment of property, have been declared by the Court of Appeals in the cases of Welch vs. Coughlan, 126 Maryland, 1; Board of Education vs. County Commissioners, 131 Maryland, 653, and Lesser vs. Lowenstein, 129 Maryland, 244. Under the limitations and restraints imposed by Art. XI-A and the Act of 1918, Ch. 456, these powers and others vested in the County Commissioners cannot be withdrawn and vested in the County Council.

Article IV, Section 4, of the Constitution provides that "the County Commissioners of the several counties shall appoint such number of constables for the several election districts as are now or may hereafter be prescribed by law."

The office of County Commissioner is not abolished by the Constitution or by the act which grants powers to the county. On the contrary, the act expressly forbids their removal. The office of County Commissioner is recognized in this most astounding provision of Section 1 of the Act, which declares: "That all subsisting liabilities, obligations, contracts, claims and

demands at law or in equity, accrued or to accrue, of said County Commissioners or in its favor, shall without further formality be and become liabilities, obligations, contracts, claims and demands of such Commissioners and County Council adopting a charter."

The charter does not in express terms attempt to remove the County Commissioners, but it attempts to do indirectly what it has no powers to do directly. It declares that "until the election of the said County Manager, and his entering upon the duties of his office, the Board of County Commissioners then in office shall continue to perform its duties as managers of the said Baltimore county at the same compensation, to be paid from the county funds, that they may be receiving as such County Commissioners when they assume the duties of such Managers. Such duties, however, shall be of the character which were incident to their duties as County Commissioners, and any appointments to office or employment shall be subject to the concurrence of the Council when elected, to be acted upon, at a meeting of the Council called by the presiding officer for that purpose, upon the request in writing of any five members of said Council or of his own motion."

Notwithstanding the usurpation of power attempted by this charter, the present Commissioners will continue in office until 1923, and thereafter three Commissioners must be elected. And, therefore, if this charter should be adopted we will have a useless multiplication of offices in this county. In addition to a County Manager, with no qualifications prescribed by the Charter, we will have until 1923 twenty County Managers, five of whom voters, taxpayers and residents of the county and elected by the voters of the whole county, and fifteen other managers not elected by the voters of the county.

In my next letter I will deal with some other objectionable features of this charter, and especially with the increased costs of administration under it.

N. CHARLES BURKE.  
Towson, August 3, 1920.

### WARREN.

Miss Annie C. Harris and Mr. Wm. Parks were visiting in Cumberland.

Mrs. Elizabeth Johnson, of Baltimore, is visiting her aunt, Miss Mary Bull, of Warren.

Mr. Francis W. Ennis, who broke his ankle playing ball at Ruxton seven weeks ago is able to be about again on a cane.

The Warren baseball team will play the Phoenix A. C. on the former's grounds today. Warren surely will win, as they usually do.

The Poplar M. P. Church will hold its annual picnic on the grounds of the Warren Club House today. Everyone is invited to attend.

Quite a crowd of the Warren folks attended the Summit Grove Camp last Sunday.

Mr. William Gaines, of Baltimore, spent the week-end with his brother, Mr. and Mrs. John Roberts, gave a party in honor of their daughter, Rose, last Saturday night.

Miss Susie Craumer and Mrs. Bertha Hedrick are visiting relatives in York.

Miss Mabronia Henry, daughter of Mr. and Mrs. Wm. H. Henry, of Beltsville, is the guest of her aunt, Mrs. Bertha Baublitz, of this place.

### GLYNDON.

Mr. and Mrs. L. Wheeler and family have returned to their home in Glyndon after spending two weeks at Blue Ridge Summit.

Mrs. Ella B. Hammond is spending some time with relatives in Richmond, Virginia.

Mrs. T. Rowe Price, Misses Mildred and Gahring Price and Mabel P. Hobbs have returned from Long Branch, N. J. where they spent two weeks.

Misses Avalon and Katherine Campbell are visiting friends at Woodbine.

Mrs. Martha Z. Wilson, of North Carolina, is visiting her parents, Mr. and Mrs. Jacob Zouck.

### MANOR GLEN.

Mrs. Lewis Rehberger and Mrs. Geo. Treut, spent the week-end in Washington, D. C.

Mr. and Mrs. R. Lauderman, of Baltimore, visited Mr. and Mrs. Wm. T. Amos last Sunday.

Dr. and Mrs. I. W. Dennison, of Washington, D. C., motored to the home of Mr. and Mrs. George Treut on Sunday morning.

Why go to the heart of the city?

T. B. GATCH & SONS

Machine Shop  
and Garage..

Belair Road

RASPEBURG, MD.

All kinds of Machine Work

Nothing too large

Nothing too small

KELLY-SPRINGFIELD PNEUMATIC and KELLY-SPRINGFIELD SOLID TIRES

Always in Stock—All Sizes.

7-26-1y Pressed on day or night at Quarry

### Wanted--Farms!

All sizes. We have cash buyers waiting.

THE BALTIMORE REALTY CO.

18 E. Lexington Street

BALTIMORE, MD.

Wanted--Country Stores!

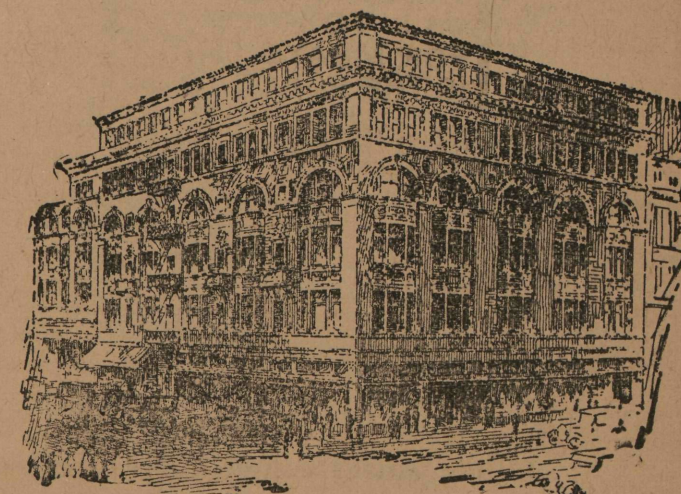
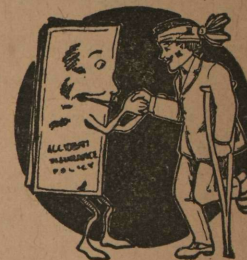
Business Strictly Confidential.

End Your Bunion Troubles!  
**FAIRYFOOT**  
soothes, absorbs and brings your foot back to its normal size and shape. It will cost you nothing if it does not satisfy.  
HERGENRATHER DRUG CO  
Towson, Maryland.

## HOME FRIENDLY SOCIETY INDUSTRIAL INSURANCE

1025 LINDEN AVENUE  
BALTIMORE

6-1-20



The Universal Shopping Center—

HOCHSCHILD, KOHN & Co.

Numbered among our shoppers-by-mail are patrons from all sections of our own great State, as well as from each State of the Union.

Orders also reach us from Cuba, the Canal Zone, Canada, and even from faraway China and Japan.

Inquiries are welcomed, too. If your home stores cannot supply all your needs, write us for descriptions and prices.

We would be pleased to number you among our Shoppers-By-Mail.

Baltimore's Best Store

HOCHSCHILD, KOHN & Co.

Howard and Lexington Sts.

2

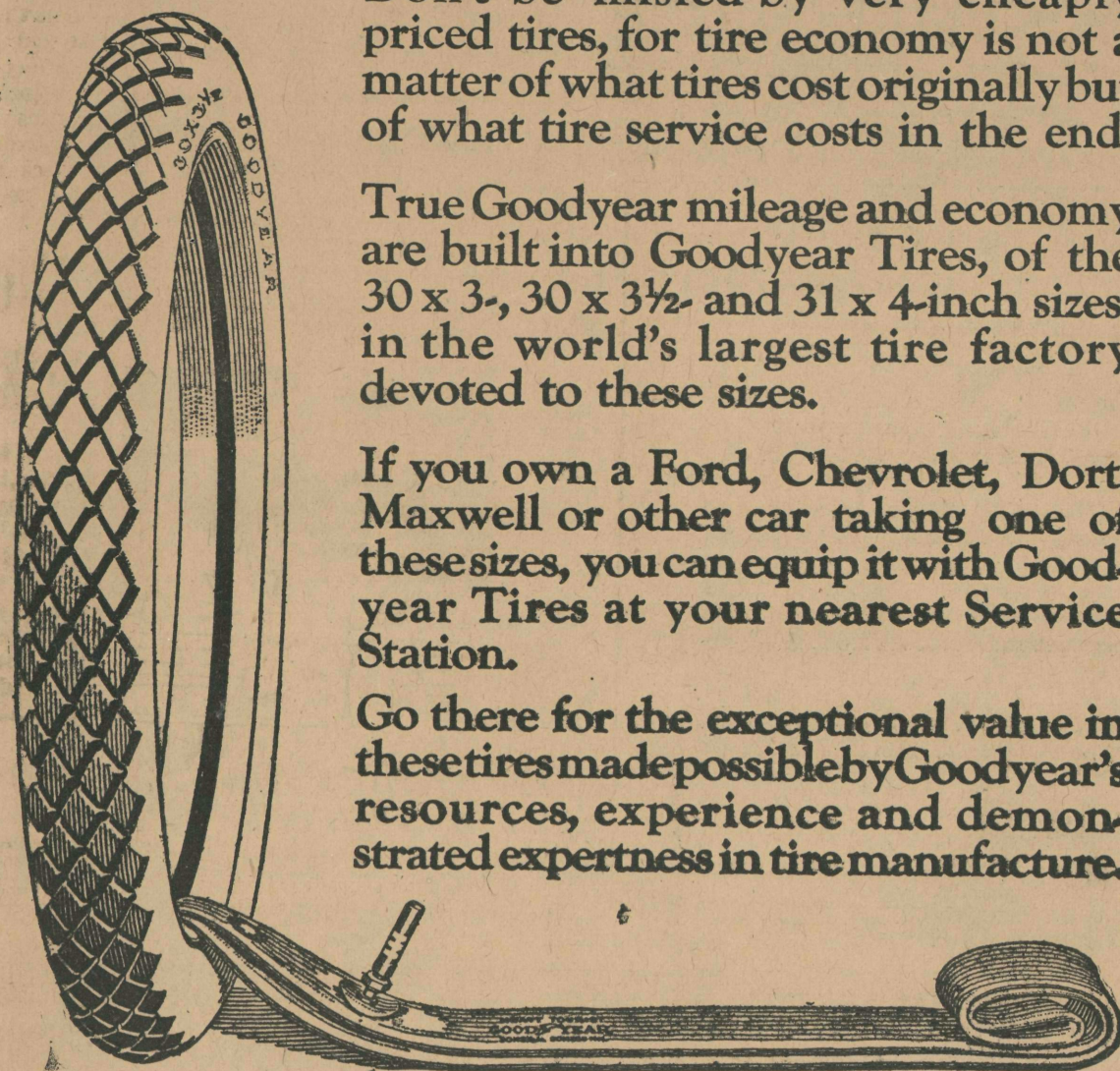
## Get Goodyear Value In Tires for Small Cars

Don't be misled by very cheaply priced tires, for tire economy is not a matter of what tires cost originally but of what tire service costs in the end.

True Goodyear mileage and economy are built into Goodyear Tires, of the 30 x 3-, 30 x 3½- and 31 x 4-inch sizes, in the world's largest tire factory devoted to these sizes.

If you own a Ford, Chevrolet, Dort, Maxwell or other car taking one of these sizes, you can equip it with Goodyear Tires at your nearest Service Station.

Go there for the exceptional value in these tires made possible by Goodyear's resources, experience and demonstrated expertness in tire manufacture.



30x3½ Goodyear Double-Cure Fabric, All-Weather Tread \$23.50

30x3½ Goodyear Single-Cure Fabric, Anti-Skid Tread \$21.50

Goodyear Heavy Tourist Tubes cost no more than the price you are asked to pay for tubes of less merit—why risk costly casings when such sure protection is available? \$4.50  
30x3½ size in waterproof bag

GOODYEAR

## The Addition of a Selden Farm Truck Will Make Your Farm Worth More.

Farm values increase immediately when Selden Farm Trucks are installed. A speeding-up of every operation begins—more work is done daily and at a lower cost than before.

More land can be planted, bigger crops can be raised and transported to the market or shipping point quicker and cheaper. Profits are multiplied. More is accomplished with fewer men about the place. Labor shortage ceases to be a handicap when Selden Farm Trucks go to work.

Selden Farm Trucks are equipped with pneumatic tires, which assure positive traction on any road or farm surface, and provide greater comfort for the driver and maximum protection to perishable crops and live stock.

The "In-Built Quality" construction of Selden Farm Trucks is perfectly adapted to farm requirements. Considering the long service rendered by these sturdy farm models and their comparatively low first cost, they are the lowest-priced trucks manufactured today.

WRITE for further information on the Selden FARM Truck and the Selden ALL-PURPOSE FARM BODY (five different types of bodies in one). Learn how to increase the value of your farm.

Auto Outing Company

21 EAST NORTH AVENUE

BALTIMORE, MD.

Phone, Mt. Vernon 1140

Selden Motor Trucks

All Worm Drive