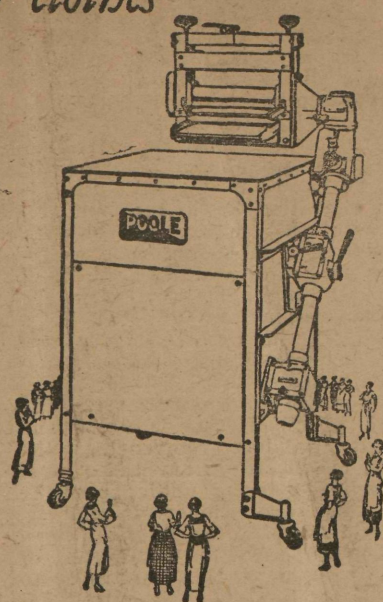


The washing machine that "loves your clothes"

Only \$99.50



# Poole ELECTRIC WASHER

One-quarter horse-power motor. Worm gear drive. All gears forged steel, machine-cut. Backed by the experience of eighty years of designing and building fine machinery. Sold under a binding full year written guarantee. Easy terms if desired. Send for descriptive folder.

See it and try it, at

**THE POOLE STORE**  
323 NORTH HOWARD STREET  
*Poole Engineering & Machine Company, Est. 1843*

### HIGH COST OF LIVING STILL GOING STRONG—ASCENSIONS IN SOME PLACES, SMALL DROPS IN OTHERS.

In Germany, Wholesale Prices Rise Ten-Fold, With Living Costs Sixteen-Fold—Austria Only County Where Definite Decrease Is Recorded.

(Special to The Jeffersonian.) A general downward movement of wholesale (but not retail) prices all over the world is evidenced in figures published, although it is shown also that prices are rising to a small extent in Australia, Belgium and New Zealand, while the increase of prices in Germany and Poland is described as "violent." The falling of wholesale prices is noted, we are told, in South Africa, Austria, Canada, Egypt, the United States of America, India, Japan, the Netherlands, the United Kingdom, Sweden, Switzerland and Czecho-Slovakia. The higher cost of living in Germany causes no surprise to observers in that country of present political, financial and economic chaos. Press correspondence and news photographs from Germany have familiarized us with the grim spectre of bread lines as an inevitable apparition of every day in cities once among the most comfortable and best fed of the world.

In Germany, during the month of August, the wholesale price level rose tenfold and the cost of living sixteenfold. If the movements of wholesale prices in Germany be compared with those of retail prices it is seen that retail prices have continued to follow wholesale prices, but only after a certain interval. At the beginning of 1923 this "time-lag" was about seven weeks, but as the increase in wholesale prices grew more rapid, this period was reduced to about one week.

Apart from the change in retail prices in Germany, no other country has shown any marked change in retail prices. The downward tendency noted in the level of wholesale prices is not yet reflected in that of retail.

#### DUNDALK FOLKS VISITING IN PITTSBURGH.

Mr. and Mrs. Elmer Pyle and son, of Dundalk, are spending the holidays with relatives near Pittsburgh, Pennsylvania.

#### SPENDING HOLIDAYS IN SHARON, PA.

Mr. and Mrs. Elmer Davis and Mr. and Mrs. Jack Davis and Mary Catherine and Jimmy Davis, of Dundalk, are spending the holidays with friends in Sharon, Pa.

#### BARKER BROOKS APPOINTED FIREMAN.

Barker Brooks, of Pikesville, has been appointed a member of the Fire Engine Company, to fill the vacancy caused by the resignation of Fireman Bradley Ireland.

#### LEMUEL W. OFFUTT ILL.

Mr. Lemuel W. Offutt, of Harrisonville, has been confined to his home by illness.

#### "UPPER END" COUPLE WED.

Mr. Erich Hilse, of Hereford, and Miss Mabel E. Matthews, of Parkton, daughter of Mr. and Mrs. Arthur Matthews, were married recently at the U. B. Parsonage, by Rev. H. L. Fehl.

#### MRS. KIDD IS VISITING RELATIVES IN BOSTON.

Mrs. W. E. Kidd, of near Walkers, left recently for Boston, Mass., where she will spend the winter with her son-in-law and daughter, Mr. and Mrs. Howard Daugherty. She has been spending the summer and fall with her son and daughter-in-law, Mr. and Mrs. Harry C. Kidd.

#### BALTIMORE COUNTY ROADS MARKED.

Markers giving mileage to nearby roads and cities, road names and important directions, now dot every improved road in Baltimore County, where only State roads have been marked in the past. The new markers totaling 75, have just been erected by the Automobile Club of Maryland with funds from its treasury.

On the principle that "a road that is important enough to be built is important enough to be marked," the Club has greatly facilitated travel through the County.

The markers are similar to those on the State roads. Three or four way markers or box signs are placed at important intersections and at hills, points of interest and turns among the improved roads. At some intersections there are fan signs, giving the destination and name of each of the two ways.

According to Club officials who just completed the system after weeks of study of County roads, it is now practically impossible for a stranger to lose his way in the irregular maze of highways that covers this section. At every doubtful point he is confronted with a distinct marker in black and white that tells him where and how far he should drive. Many expressions of appreciation have already been received at the Club headquarters for this service.

#### SPENDING HOLIDAYS WITH FRIENDS IN WEST VIRGINIA.

Miss S. Fleming, vice-principal of the Parkville Public School, is spending the holidays with friends in West Virginia.

#### VISITING PARENTS AT COUNTY SEAT.

Mr. Walter Cole, a law student at Harvard University, is spending the holidays with his parents at Towson, Clerk of the Court and Mrs. William P. Cole.

#### PARKVILLE LAD QUITS NAVY.

Lee Reeling, who has been in the U. S. Navy three years, received his discharge on the 15th of December, and is now at the home of his parents, Mr. and Mrs. C. S. Reeling, of Parkville.

#### JACKSONVILLE CHURCH HOLDS YULETIDE ENTERTAINMENT.

The Reformed Church of Jacksonville held its annual Christmas entertainment last night (Friday).

#### 18 ARE FINED FOR THEFT OF GREENS.

Eighteen persons have been fined from \$5 to \$25 for stealing holly, mistletoe and other Christmas greens in the Counties around Baltimore. The State Forestry Department reported that the magistrates are heartily co-operating in the enforcement of the law that forbids the cutting of such greens and does not require a definite larceny prosecution. Possession of the greens by persons who cannot explain where they obtained them is serving as sufficient cause for arrest by the State Police, who patrolled the leading roads into the City.

Alas many of the finest roads in past years there has been wholesale destruction of the finest of the State's evergreen growth, including often imported specimens that property owners have obtained at heavy expense.

The holly trees, when allowed to reach maturity without pruning, are so shapely that few owners of them care to cut them. The low growth from old stumps, however, produce large crops such as farmers send to the City markets each year.

**KEMP'S BALSAM**  
Don't let the children cough and cough!

**IDEAL XMAS GIFTS for the Home or Office**

**TYPEWRITERS**

ALL MAKES Beautifully reconstructed \$12.50 to \$65.00 GOOD AS NEW Convenient Terms

**HESS TYPEWRITER CO.,**  
19 W. FAYETTE ST. Baltimore, Md.  
Phone Plaza 2229

# MOTOR Comfort summed up in one word spells BETHOLINE "THE WONDER MOTOR FUEL"

In severe weather, it insures a quick, sure start, speedy pick-up, more mileage and less carbon than any other motor fuel.

"Buy it by the can"



## SHERWOOD BROS., Inc.

Originators and Manufacturers of BETHOLINE and REXOLINE

# New Year's Greetings

To you as one of our valued friends we send this greeting for a happy and successful New Year with the hope that our friendly relations continue for many years to come.

# STEWART & CO.

In Connection With James McCrea Co., New York.

Howard and Lexington Baltimore, Maryland

**FRANCIS C. DORSEY**  
Plumbing, Heating, Sheet Metal and Electrical Construction  
**SEWER CONNECTIONS**  
Pennsylvania and Delaware Aves. TOWSON, MD.  
Phone, Towson 475

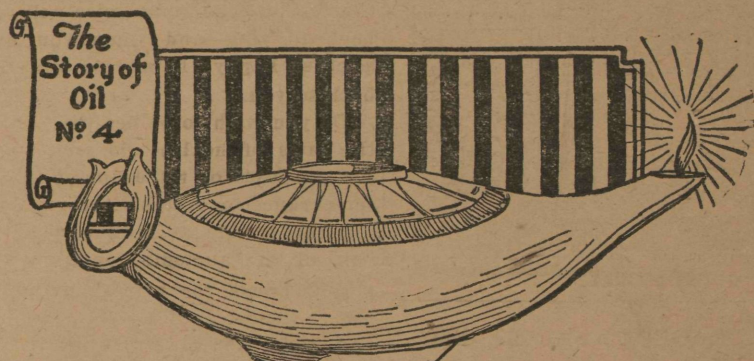
COME AND SEE THE NEW

# Oldsmobile

**SIX**  
NOW ON DISPLAY  
**\$750 F. O. B. FACTORY**

Used Cars at a Bargain. Special Motor Repairing, Batteries, Generators, Starters, Welding and Brazing.

**Towson Radiator & Welding Works,**  
East Penna. Avenue TOWSON, MD.



## The Ancient Egyptian Lamp

THE EGYPTIANS are credited with the making of the first lamps. Their use was known in the days of Moses and Job. The ancient Egyptian lamp was made of baked clay or bronze, in the form of a shallow vessel, closed over the top, a handle at one end and a beak at the other to feed the flame.

THIS form of lamp is still in use. Among the Canadian French may still be found the same shaped vessel, provided with a wick. Some of these lamps are made to be carried in the hand and placed on tables, while others hang by chains from the ceiling.

What a shame Moses could not live to enjoy the perfect Kerosene that you of today can buy in The Red "C" Oil and The White "C" Oil, same except in color. Even in the crude lamps of his time, this wonderful Oil would have been a revelation. And we are sure that Moses would have bought The Red "C" Oil or The White "C" Oil. Because he was a wise man!

**The Red "C" Oil**      **The White "C" Oil**  
Colored a cheerful ruby red      A pure white Kerosene Oil, to make your lamps attractive      clear as crystal

**NO SMOKE -- NO ODOR**

At the following good dealers:

- G. B. Caltrider, Reisterstown, Md.
- Robert Corbett & Son, Pikesville, Md.
- N. M. Dell, Herrwood, Md.
- Garner Bros., Owings Mills, Md.
- N. Griffin, Parkton, Md.
- H. Harker, Hollbrook, Md.
- C. A. Hartke & Bro., Elkridge, Md.
- J. T. Hicks, Hereford, Md.
- D. H. Kelly, Harrisonville, Md.
- C. S. Kenly, Madonna, Md.
- J. H. Merryman, Sparks, Md.
- Nelson Store Co., White Hall, Md.
- T. E. Pearce, Hereford, Md.
- C. E. Plovman, Parkton, Md.
- H. Price & Son, Sparks, Md.
- Starnor Battery Station, Turnpike Station, Md.
- J. C. Stiffler, Parkton, Md.
- S. Street, Shawsville, Md.
- W. W. Wade, Oil Coat & Liberty Roads
- E. G. Wheeler & Son, Glyndon, Md.
- Chas. Whitney, Reisterstown, Md.
- J. F. Wiley, White Hall, Md.
- W. B. Wright & Son, Vernon, Md.

## The Red "C" Oil Company

45 Years in the Oil Trade

## Have You Noticed

That Most Heavy Cars Are Equipped With

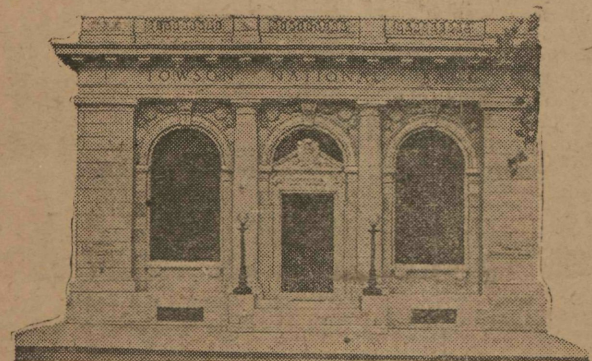
# HOOD CORD TIRES

They deliver proportionately greater mileage on smaller cars too.

You have reason to believe that Popularity is proof of quality. Inquire about our trade-in value on the worn tires on your car.

**MARTIN J. BARRY**  
Lafayette Ave. & Charles St.

## The Towson National Bank



Depositors in The Towson National Bank who hold Pass Books in the Savings Department of this Bank, should present same to the Bank and have the Annual Interest Credited thereon, which is paid at the rate of Four Per Cent.  
**MARTIN R. SCHUSTER, Cashier.**

GAY STREET BRANCH  
1438 N. Gay St.

WALBROCK BRANCH  
3052 W. North Ave.

MAIN STORE AND OFFICE  
3517 Eastern Ave.

## MUELLER MUSIC SHOPS

PIANOS AND PLAYER PIANOS  
VICTROLAS & VICTOR RECORDS—Exclusive



The Schubert Player Piano with the Virzi Tone Producer is "The World's Best Toned Piano." It has the endorsement of all leading musicians as Adolfe Betti, Fritz Kreisler, Lingi Camuni, Ernest Schelling, Jascha Heifetz and many others.

Schubert Pianos are guaranteed for 25 years. Sold in Maryland only at  
**MUELLER MUSIC SHOPS**  
3517 Eastern Ave.  
1438 N. Gay Street  
3052 W. North Ave.

For full particulars as well as a valuable Book of Information—Free—send this Coupon to MUELLER MUSIC SHOPS, 3517 Eastern Ave., Balto.

Name \_\_\_\_\_

Address \_\_\_\_\_

Information Wanted on

Grand  Upright  Player Piano