

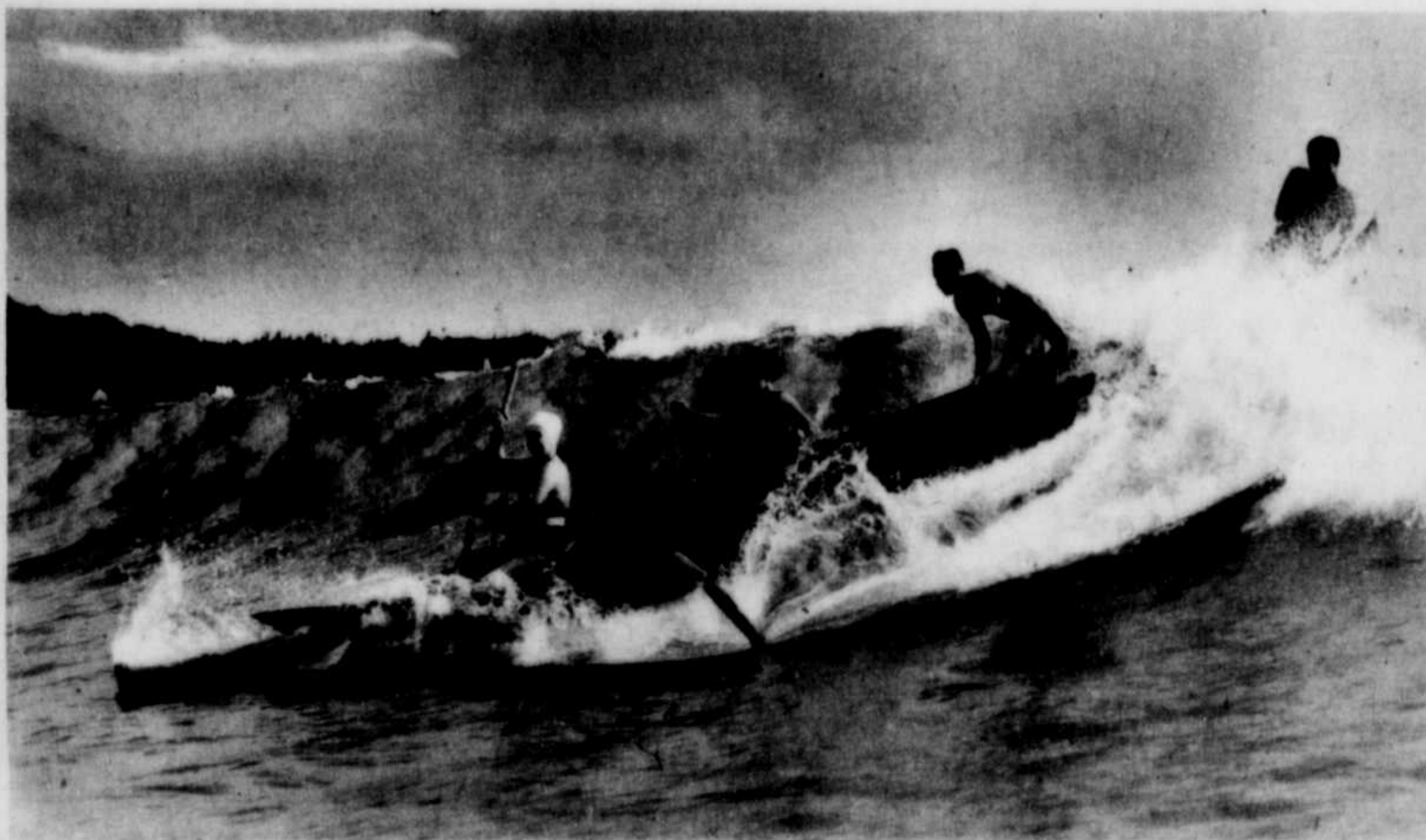


The
STATE FARMER
SECTION
AGRICULTURAL FEATURE OF



THE MIDLAND JOURNAL

RIISING SUN, MD., FRIDAY, APRIL 10, 1936



BOATING THRILLS. Skidding over a big wave at Waikiki, University of Hawaii students (above) have an exciting ride.

(Below) There's excitement, too, in a boat ride through the Stygian darkness on Echo River, Mammoth Cave, Ky. (Pan-Pacific Press Bureau and Caulfield & Shook Photos)



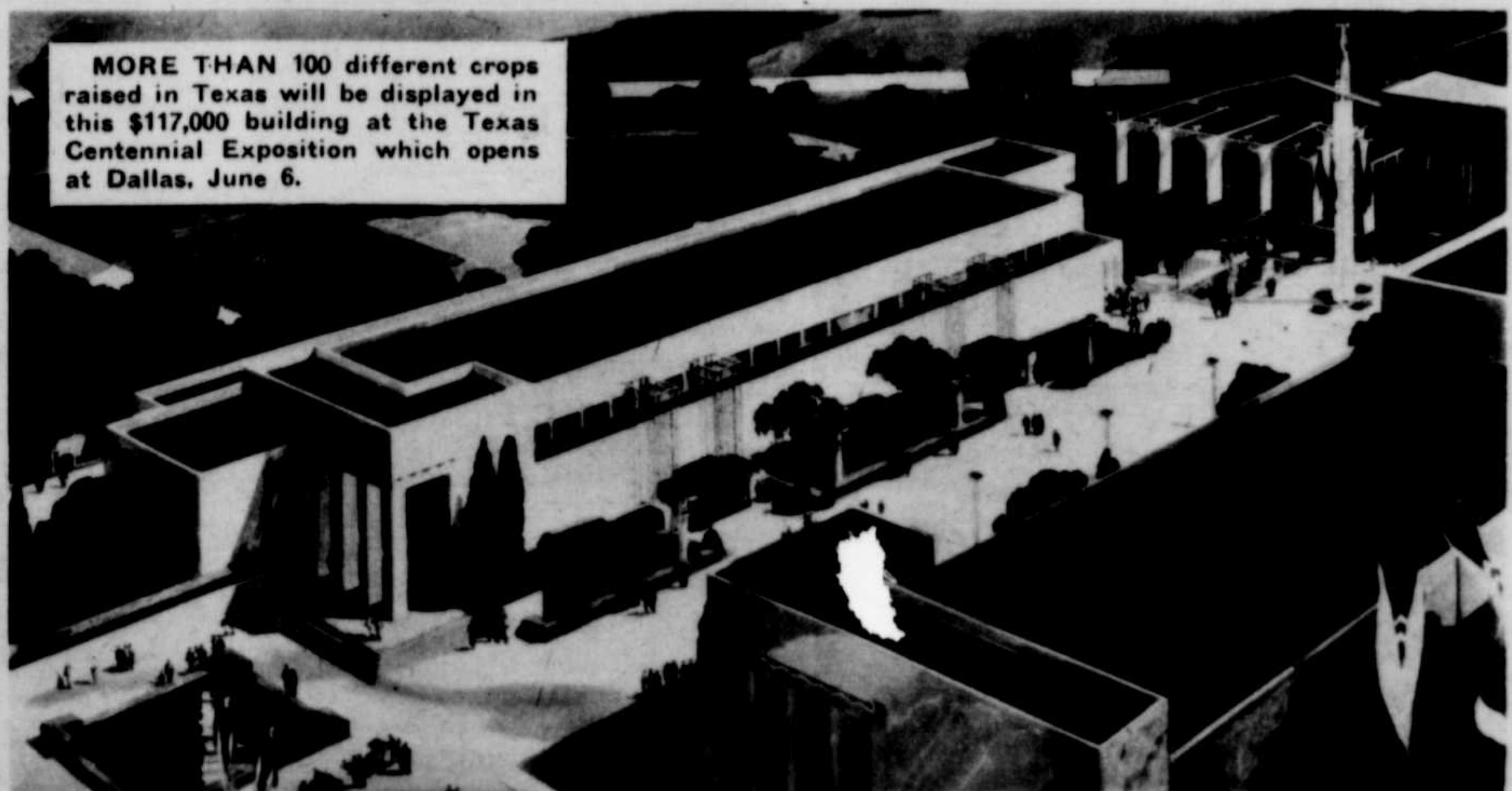
WHEN THE RHODODENDRON BLOOMS on the Great Craggy Mountains, the Southland turns to Asheville, N. C., for the annual Rhododendron Festival, June 15 to 19, this year. Above, the royal blossoms. Below, reigning royalty, the King and Queen of the Rhododendron Kingdom.



LIKE A FAMILY LETTER, the home newspaper is taken eagerly from the R. F. D. box to be immediately scanned for local news—and for news of the wide world as well. Caught by the camera, as she takes the paper from the box, this pretty farm girl typifies the definite part the community newspaper plays in the farm family's life.—(H. Armstrong Roberts Photo)



KENTUCKY AND TENNESSEE CADETS at the U. S. Military Academy at West Point, don girlish wigs for the annual play, "Two Million Daze." Charles Pulliam, Fort Thomas, Ky., (left); Clarence Evans, Nashville, (right). (Acme Photo)



MORE THAN 100 different crops raised in Texas will be displayed in this \$117,000 building at the Texas Centennial Exposition which opens at Dallas, June 6.