



den gate is typical of the improved farm home aided by Dame Nature's hand, give new beauty ect result of a national rural interest in home

MARGARET SULLAVAN

Pattern No. H-3126

Not too many tricks to make you tire of this sport dress after a few donnings, because this dress has lines that will make you cut a perfect "figure."

The four patch pockets carry out the deep point motif of the collar and the tricky arrangement of bakelite buttons which is amazingly intriguing and new. The wide flapping collar schemingly borrowed from little brother's sport blouse suggest a mannish line but not too extreme because it is overlaid with another collar of contrasting color which is more than fascinating and feminine hinting. A set of cuffs to match are casually turned back into wide bands. Select a color which is flattering to your personality and carry it out in a coarsely woven wool, or a summer tweed.

Pattern available in sizes 12, 14, 16, 18 and 20. Corresponding bust measurements 30, 32, 34, 36 and 38. Size 14 (32) requires 2 3/4 yards of 54-inch material, plus 3/8 yard 36-inch contrast.



PLAYTIME FROCK

Pattern No. H-3123

This little Miss Muffett is Betty Holt, wearing a sweet little daytime or playtime frock which you can make for your own Miss Muffett in less than a jiffy. It has just those features you always look for in little sister frocks.

There is a button trim all the way down the front, to simulate the styling of your own spring frock, but the buttons open only to the waist. If you wish, of course, you can open the frock all the way and use the buttons accordingly.

Pattern designed for sizes 2, 4, 6, 8 and 10. Size 4 requires 1 7/8 yards of 35-inch fabric plus 1-3 yard contrast.



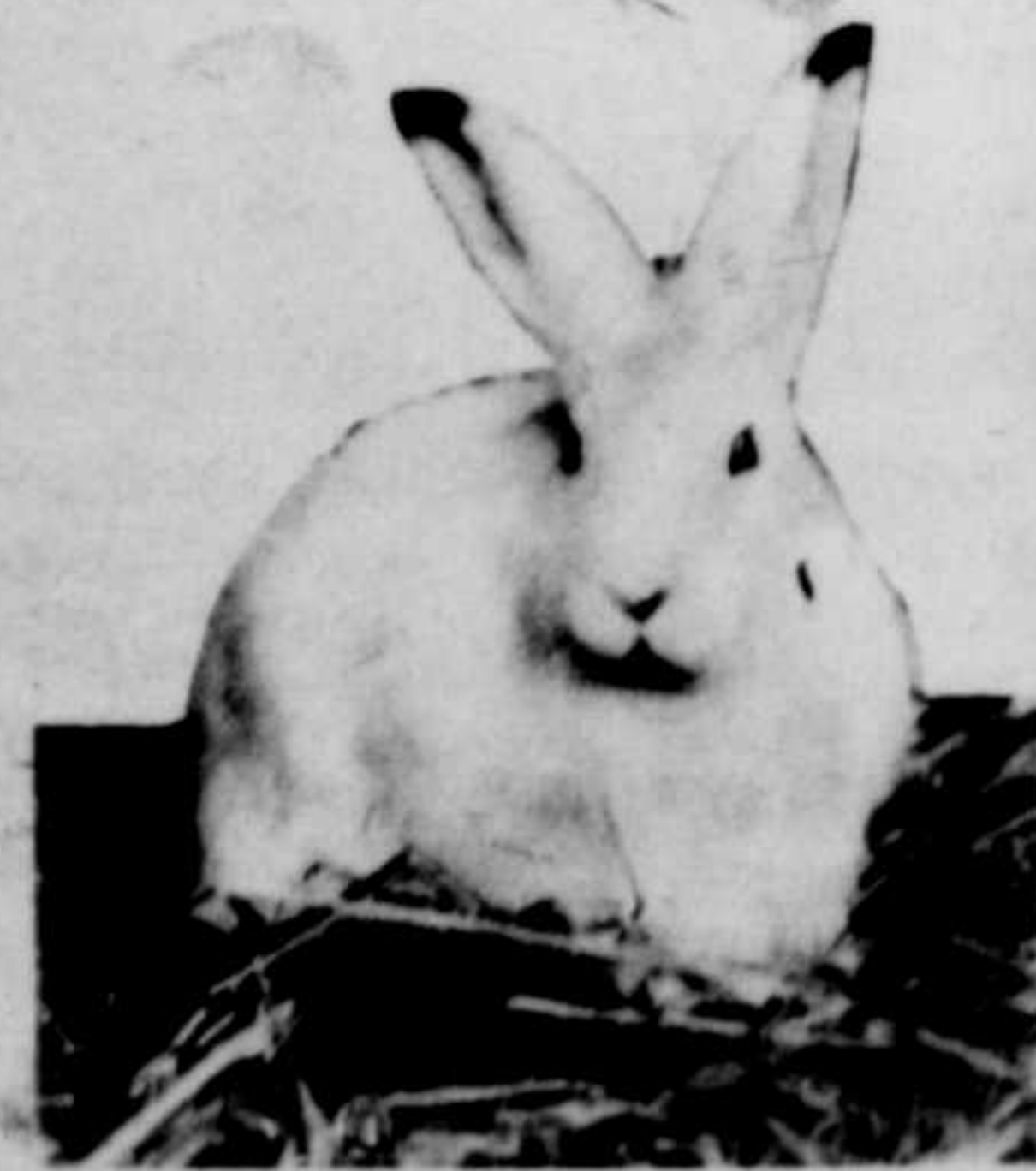
NOW, IRON A WHOLE WASHING 11¢

The amazing new Diamond Self-Heating Iron actually runs 3 to 5 hours for only 1¢, and cuts ironing time to half! Heats high-pressed electric and gas irons for speed and economy yet costs less. No tangling wires—no trailing tubes or hoses—entirely self-contained. Quick, regulated, uniform heat. Burns 90% air-oil 40% kerosene, benzene, coal-oil. Cleaning CHIRP! M! M! (which assures hand-dress appearance and long life—to use it is to want it instantly.)

HOME TRIAL. Write for complete description and opportunity for trial offer.

Golden Harvest for Agents! Write now! \$16—Juniata \$15 in one day! Write at once for sensational proof of big new earnings by agents everywhere.

ARON LAMP & MFG. CO., 466 Iron St., Akron, Ohio



Patterns of dresses pictured above 25¢. Please remit in coin or stamps. Give your name, address, pattern number and size. Mail order to Pattern Department, State Farmer Section, Fletcher, N. C. A 32-page Spring and Summer Pattern Book is available at 15¢ each, or if bought in combination with pattern, 35¢ for pattern and book.

PATTERN DEPARTMENT STATE FARMER SECTION

Scenic Bldg., Asheville, N. C.

Enclosed.....cents in coin for

Pattern No..... Size.....

Pattern No..... Size.....

Name

Address

Town

(Wrap securely in paper)

"You'll be the Grandest Lady In that Easter Parade"

Patterns for these Distinctive Spring Styles may be obtained from The Pattern Department of THE STATE FARMER, by sending 25 cents with the coupon below.

TWO-PIECE FROCK

Pattern 3098

Trim, slim and anything but prim, this striking two-piece frock is perfect for day time wear in town from now on throughout the season. The unusual and seemingly intricate detail of the printed top is surprisingly simple in construction. The model pictured is made of washable rayon crepe, the navy background of the broken-circle print blouse matching the solid color of the fitted skirt. This material is easy to handle in sewing and does not pull away at the seams in wear.

Pattern designed for sizes 12, 14, 16, 18, 20; 40 and 42. Corresponding bust measurements 30, 32, 34, 36, 38, 40 and 42. Size 14 (32) requires 2 1/4 yards of 39-inch fabric for the blouse and 2 yards for the skirt. Fabric: Chulla crepe (Marvjo Mills) about \$1 per yard.



WITH WHITE ACCENTS

Pattern H-3136

White accents for Spring are high fashion this season and unusually smart and becoming when used on the new tailored prints. This nicely tailored shirtwaist dress achieves distinction through use of a wide under-collar and under-cuffs in white crepe, matching the square composition buttons and belt buckle.

Pattern available in sizes 12, 14, 16, 18 and 20. Corresponding bust measurements 30, 32, 34, and 36. Size 14 requires just 4 yards of 39-inch fabric plus 2-3 yard contrast.

Fabric: Nu-Clipper crepe (Arthur Betr) about \$1 per yard.

