

# CULPEPER is Diversified

By J. C. Eller

County Agent

**L**OCATED in the center of a large agricultural territory, within a few hours' run of Washington, D. C., and Baltimore, Culpeper County's agricultural interests are truly diversified and well balanced. The land is classed with the best in Virginia.



The author and his daughter Carolyn.

Dairying is chief among the county's agricultural enterprises, closely followed by poultry raising. Corn, small grains and legume hays are produced in abundance. Many tons of alfalfa and clover are sold from Culpeper annually.

Culpeper County stands near the top in the United States in number of certified herds for Bang's disease, 900 cows on test for milk and butterfat production. Seed Growers' Association, with 152,000 pounds lespedeza, 500 bushels of red clover and 1,000 bushels of oats sold for 1935. There are around 4,000 head of sheep with fancy lambs going to Baltimore and Jersey City markets. There are several breeders of fancy and draft horses.

In an agricultural way, the county has kept pace with the town. Fine farms and country homes dot the country. The climate is ideal. The dairying industry alone brings to Culpeper approximately \$25,000 per month.

#### 42 On Farm Board

The guidance of agricultural interests is in the hands of an agricultural board composed of 42 progressive farmers, broken down into community committees. These men meet four times a year.

In December, the board holds its annual meeting. At this time results are reported and plans in detail are discussed for the following year. This set-up has proven the most valuable organization in the county. Farmers with community and county interests at heart, have demonstrated what can be accomplished for the advancement of agriculture.

Culpeper County has 11,360 dairy cows, 5,000 beef cattle, 7,000 head of swine, 4,000 head of sheep, and 100,000 head of poultry.

During the last six years, 334 registered sires, an average of 56 a year, have been placed in the county. This one phase of planned work has resulted in a great increase in the value of livestock sold from Culpeper farms.

#### Dairying Leads

Dairying is the county's largest enterprise. Forty-eight dairymen ship whole milk into Washington City daily. A number ship milk to Fredricksburg.

Culpeper's largest enterprise is dairying. Due to better sires work, herd improvement and splendid marketing associations, the county has some of the finest herds of Holsteins, Jerseys and Guernseys in Virginia.



while others produce cream sold to local plants.

Due to the better sires work, herd improvements and splendid marketing associations, Culpeper can boast of some of the finest herds of Holsteins, Jerseys, and Guernseys in the State.

Culpeper, up until a few years ago, depended on North Carolina and South-west Virginia for stocker cattle. However, farmers have been encouraged to build up cow herds. Today the county has 21 high class cow herds of Angus, Shorthorn and Hereford. All these herds are headed by registered bulls. Culpeper has 10 purebred herds of Angus, two Hereford, and two Shorthorn.

#### Sheep Improve

An outstanding improvement has been made in sheep. Through the work of registered rams, treating for stomach worms, docking and trimming, and creep feeding lambs, Culpeper produces some outstanding lambs. Ninety-five per cent of all flocks are treated for stomach worms, and 97 per cent of all lambs are docked and trimmed. For the last seven years, wool has been graded and sold on a cooperative basis, a car being loaded each year. Also each year a sale and exchange day has been held, which has done much to encourage and stimulate interest for the production of better livestock.

Grading and shipping lambs has grown by leaps, about 12 times more sheep, cattle, and hogs being marketed on a cooperative basis in 1935 than in 1934.

Poultry has shown a big increase in the past eight years, the predominating breed being White Leghorns. Buying chicks from certified flocks, proper buildings and care, have given excellent results. Several flocks have been holding averages of 70 per cent production.

This Spring 10,000 baby chicks were bought on a cooperative basis. All these chicks are from trap nested flocks, where size of egg, color, texture and number of eggs per hen have been selected for years.

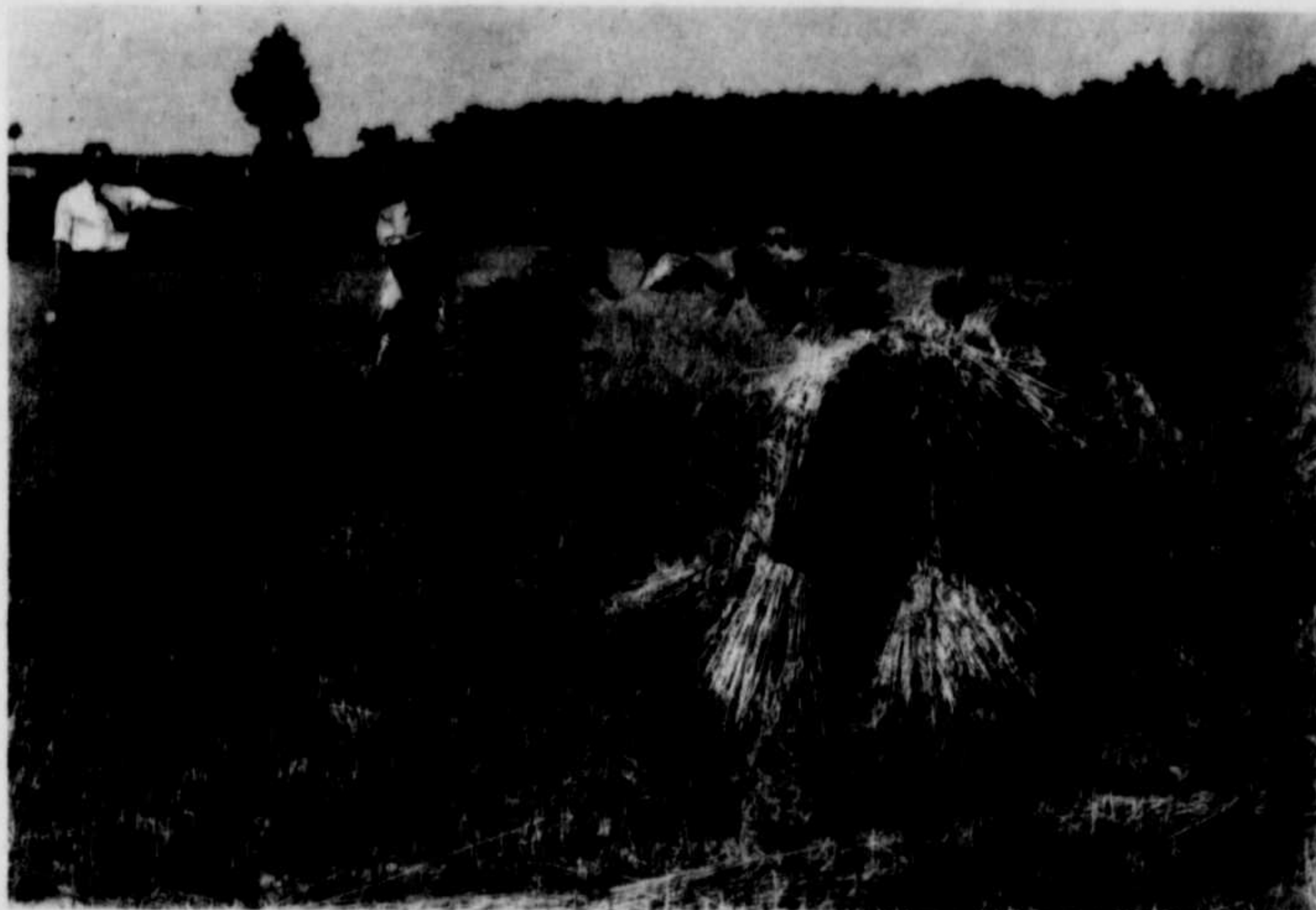
#### Grains and Hay

The greater part of the county is ideal for the growing of clovers and alfalfa. Due to the progressive movement of farmers, thousands of tons of lime have been used. Culpeper produces an abundance of fine clover and alfalfa each year. The county has been producing Red Clover from home-grown seed for 25 years, including over 1,000 bushels. Plans are under way to certify several crops this coming season.

The type of land found in Culpeper County produces fine crops of corn, wheat, barley, and oats. Last year top yields of oats were 68 bushels per acre; barley, 56 bushels per acre; wheat, 42 bushels per acre; and corn, 70 bushels per acre.



Wool is graded and sold on a cooperative basis in Culpeper County. Loaded here, 24,035 pounds net was sold and shipped by truck last year to a North Carolina mill.



County Agent J. C. Eller shows an example of small grain produced in Culpeper County. Last year, top yields of oats were 68 bushels per acre; barley, 56 bushels per acre; wheat, 42 bushels per acre, and corn, 70 bushels per acre.



Building up their herds, Culpeper County farmers now have 21 high class herds of Angus, Shorthorn and Hereford. Two purebred herds of Herefords are included. Pictured here is a nice group of Hereford yearling steers.



Through the work of registered rams, treating for stomach worms, docking and trimming and creep, Culpeper produces outstanding lambs. Grading and shipping of lambs has grown by leaps. About 12 times more were marketed on a cooperative basis last year than in the previous year. For the last seven years, wool has been graded and sold through an organized effort, a car being loaded each year. In addition an annual sales and exchange day has been held to stimulate interest in producing better livestock.