

inner walls 13 feet 10½ inches; and width 9 feet 4½ inches, clearance between side walls 7 feet 1½ inches. Twenty-two gas burners are used for heating each furnace. Any common type of gas burner of

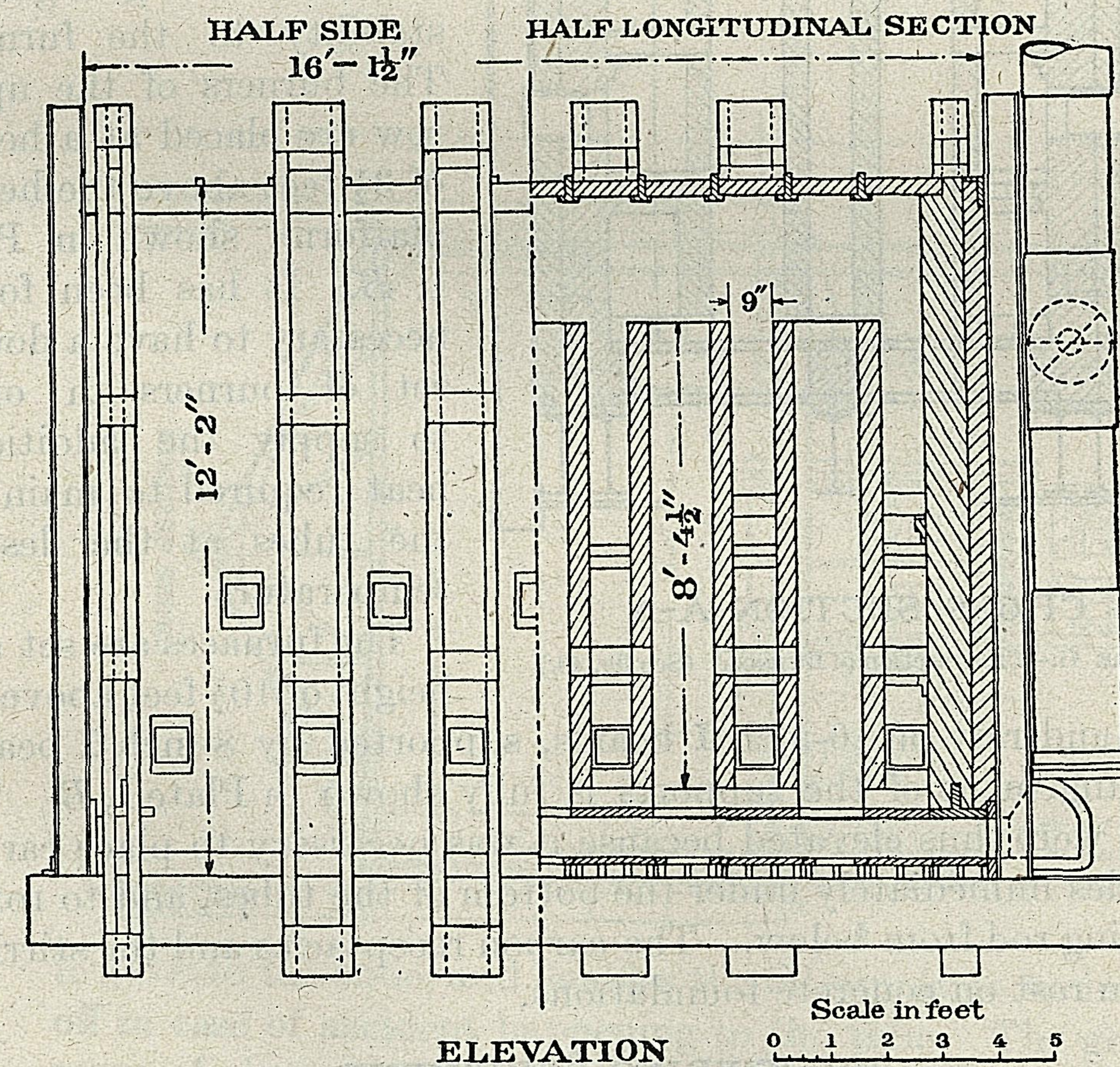
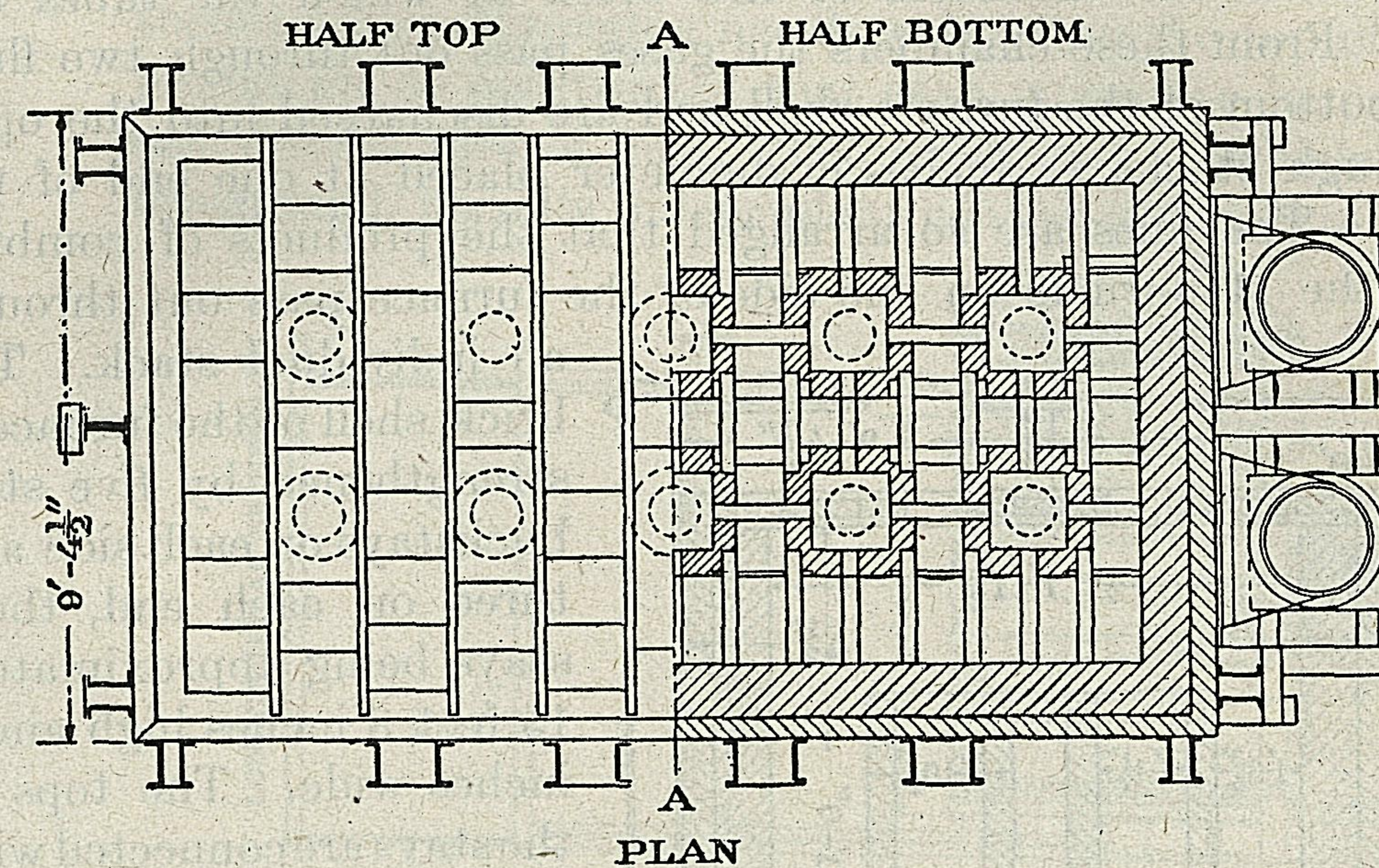


FIGURE 40.—Plan and elevation of furnace at development plant.

sufficient capacity may be used. The consumption of gas per tube averages about 300 cubic feet per hour with the present installation, which has not been operated with particular regard to economic heating.