

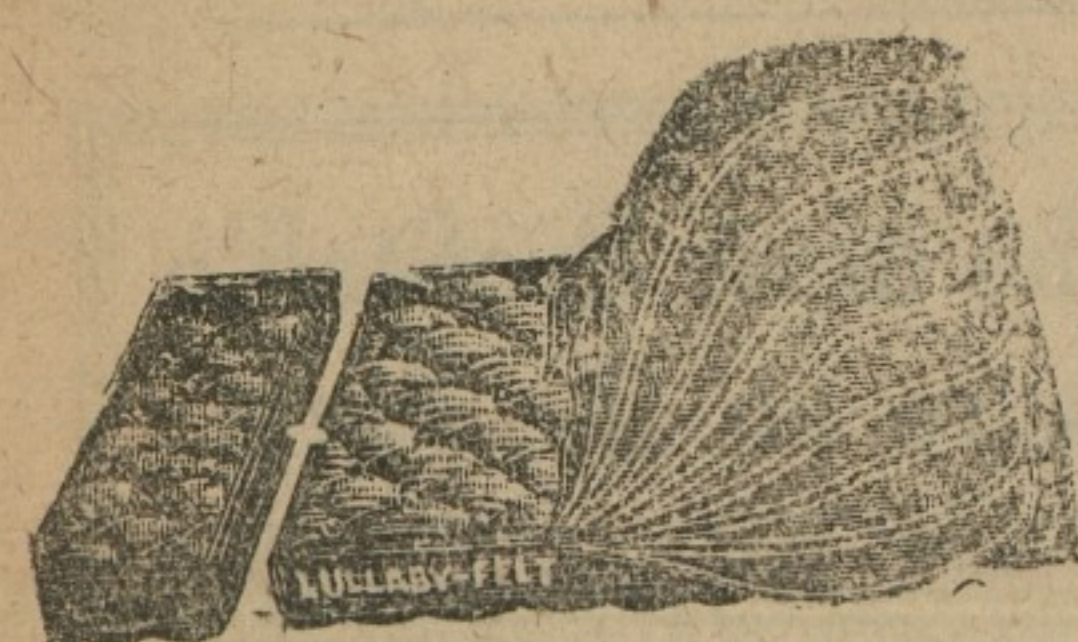
WM. MEDDERS & CO.

LOWER PRICES FOR APRIL

Our big stock is at your service and convenience—our lower price is your saving.

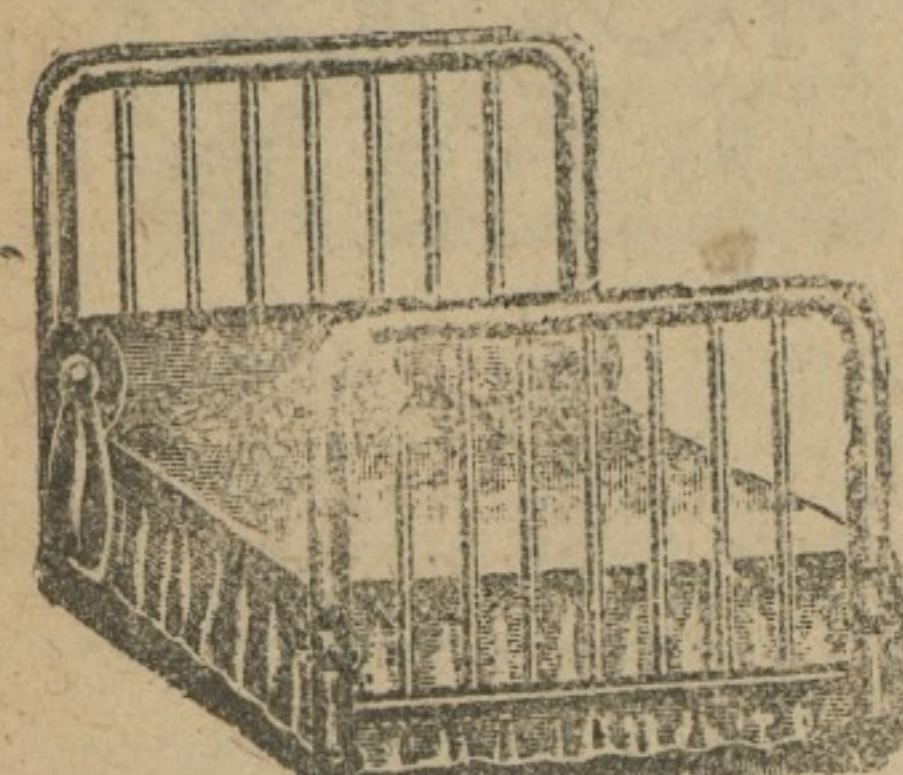
The most wholesome Mattress of all. We are selling good Felt Mattresses with select ticking.

TRY A FELT MATTRESS



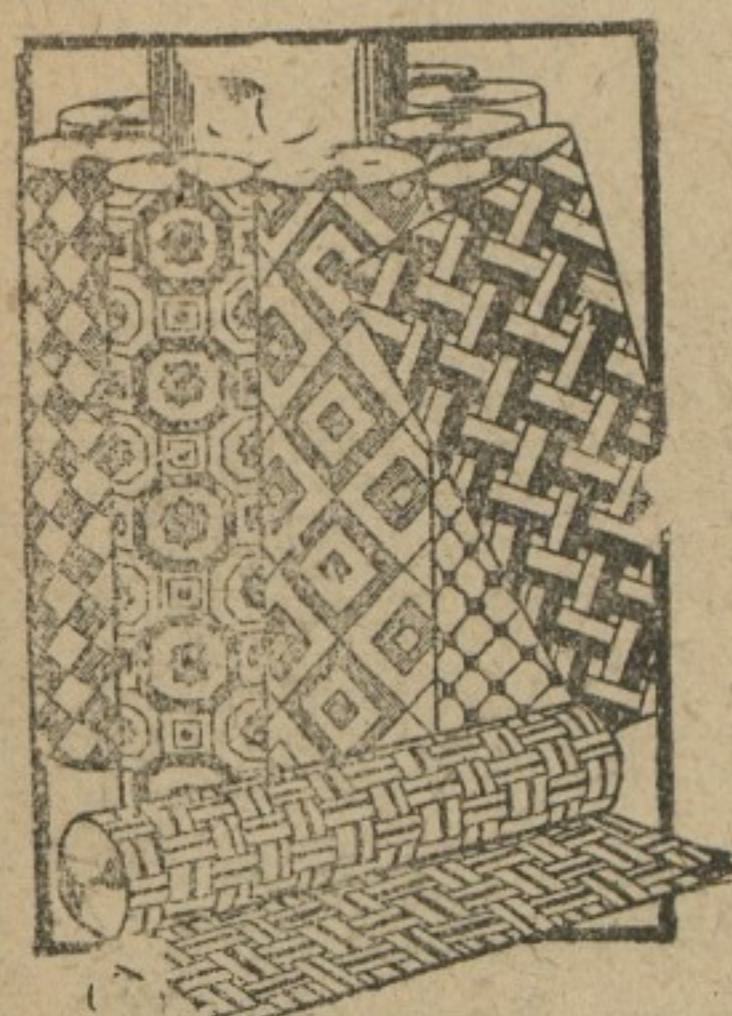
Genuine All Felt Mattress, Best \$12.50 values now \$7.50.

WHITE ENAMEL BEDS



Good White Enamel Beds, in all widths—all reduced—now \$7.50, \$10, and \$12.50.

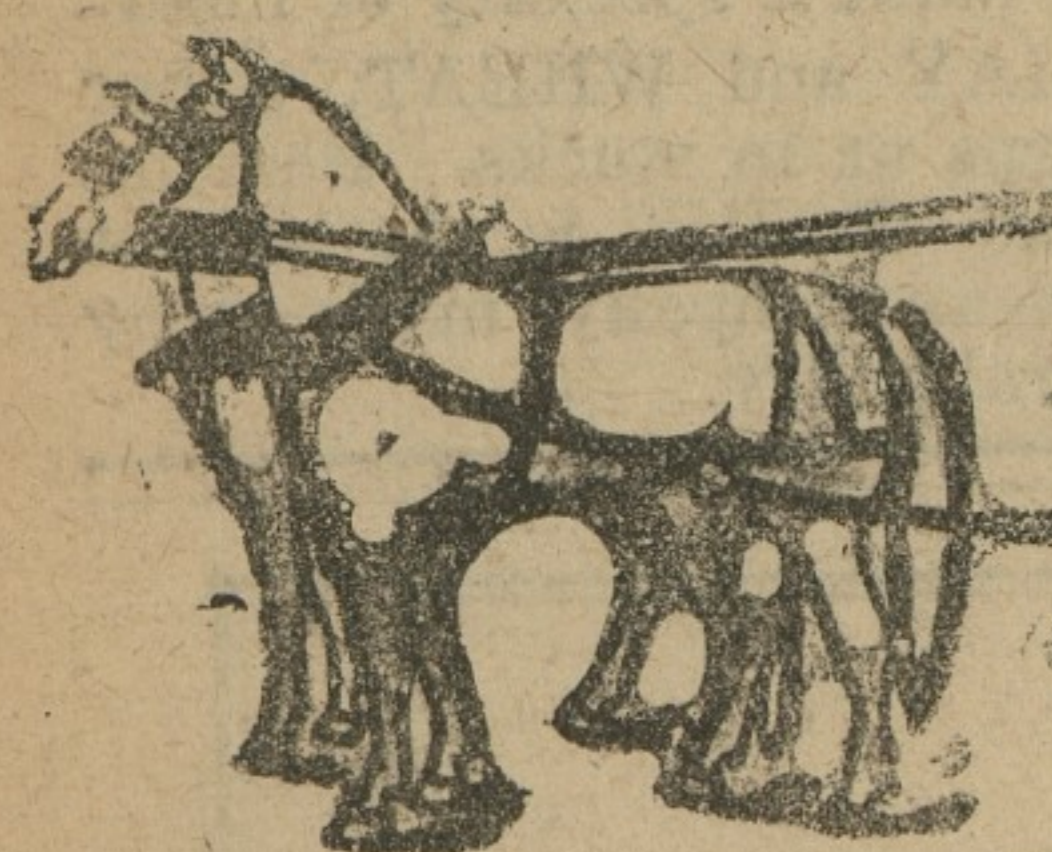
GENUINE LINOLEUM



Wilde Best Caulk Linoleum, bur-lap back, heavy \$1.25 quality now 75c

Wagon Harness

BACK TO OLD PRICES



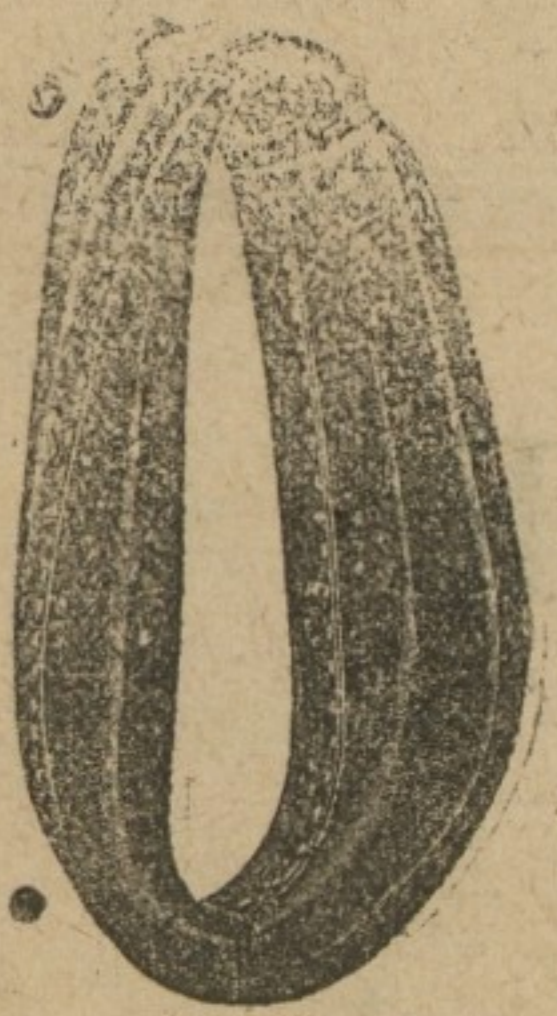
Double Heavy Wagon Harness, made with 1 1/2 inch traces, all clean stock—made extra strong, less breechings and lines. For two horses, now only \$15.00.

Double Wagon Lines

\$2.90

- Chain Traces
Rope Traces
Plow Lines
Back Bands, Etc.
All back to old prices.

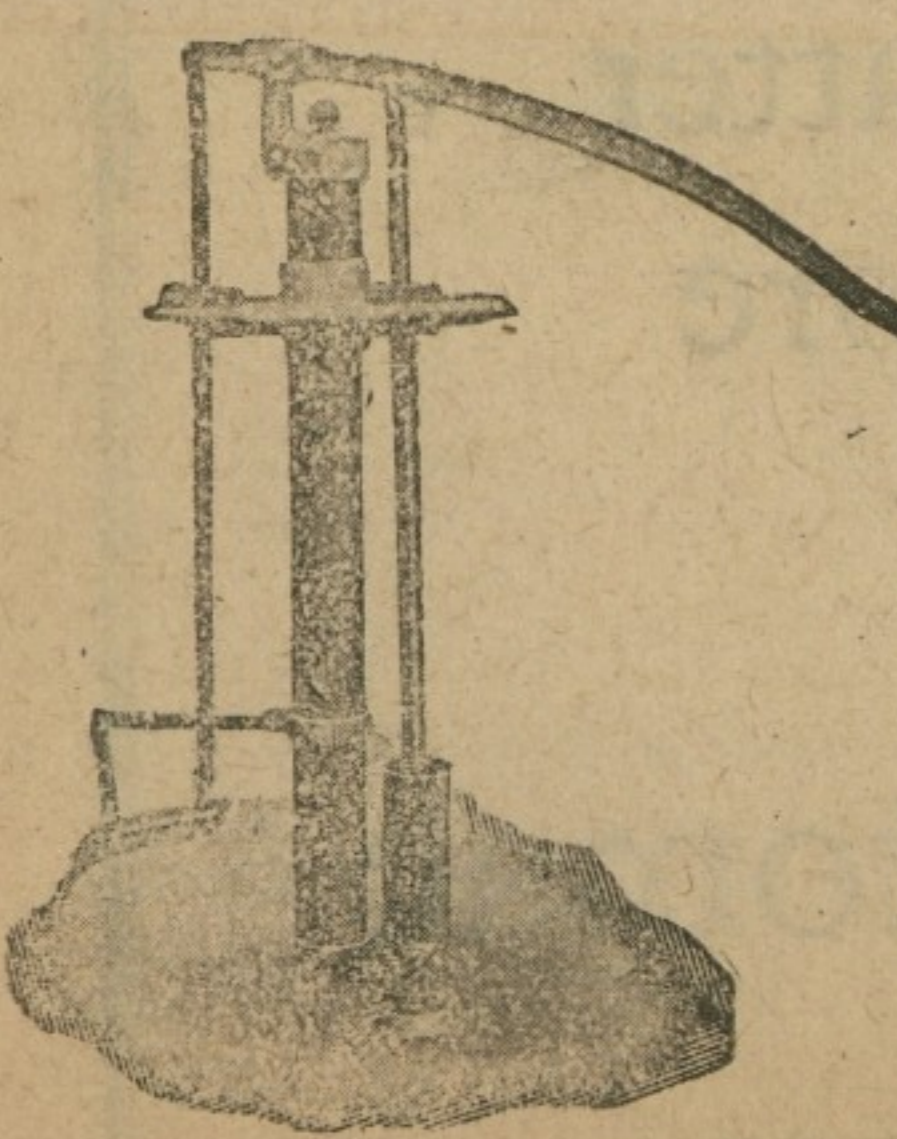
Gall-Cure Collars



Horse Collars are back to low prices again. Prices \$1.90, \$2.90, \$3.90.

Good Plow Bridges are on the bargain list. Prices \$1.90, \$2.90.

We Sell The ECLIPSE SPRAY PUMPS



Price now is \$19.00.

Wm. Medders & Co.

PHONE 2 STILL POND, MD.

ROCK HALL

The little legislative session over the creek, seeing themselves largely in the minority on many of the problems before the big legislature at the ancient city during the winter are about ready to adjourn sine die.

Spring fever and gardenites struck this section the past few spring-like days. Considerable gardening is being done. James Rowe is making fine improvement to his front lawn by leveling the ground and re-seeding.

The Judefind Bros. are making rapid progress on the new Great Atlantic and Pacific Tea Store building. It was thought that the new A. and P. store when it gets in operation, would be discouraging to our merchants, but they seem to be unconcerned about the matter.

Many of our people are victims of bad colds. Our doctors always on the job.

A number of our merchants are banking on a thrifty Easter sales. They have for the past three weeks been displaying the finest Easter novelties ever.

CHURCH NOTES

Rev. H. A. Wilson has been assigned to Kent by the M. E. Church, South, which closed its annual conference in Washington Monday.

The musical program at Christ M. P. Church Sunday included a beautiful duet in the morning by Miss Emma Ward and Prof. Roy Woodland; a fine trio at night by Mr. and Mrs. J. H. Thompson and Mrs. J. H. Sides and a sweet solo by Miss Helen Rouse.

The men's Bible class had charge of the Sunday school services at Wesley Chapel last Sunday, with Mr. N. Moffett, acting superintendent. They had a special orchestra and special vocal music for the occasion and were rewarded by having a large attendance.

Sunday services at Wesley Chapel: 10:00 a. m. Sunday school, 11:00 a. m. preaching services.

Broad Neck, preaching at 3 p. m. Skinner's Neck, 2:00 p. m. Sunday school, 7:30 p. m. preaching service.

Tuesday, April 4th, at 2 p. m. the Ladies' Aid of Wesley Chapel will meet at the church hall.

Kent County Young People's Conference. Time, April 25th, 1 p. m. to 9:30 p. m.; delegates, official delegates at least five from each Sunday school in Kent county; their requirements must be between 15 and 24; have their bibles and note books with them; registration fee of 75 cents each, includes all privileges including council fire, recreation hour and banquet.

Fastors, Sunday school superintendents and teachers of young people between ages 15 and 24 upon registering and paying fee of 75 cents will be entitled to all privileges. Special award will be presented to school having largest number of delegates, registered in advance. Register by April 25th with A. F. T. Raum, County Superintendent. More details next week.

CHURCH NOTES

Christ M. P. Church, Chestertown, N. O. Gibson, pastor. Services Sunday, April 1st, as follows: Communion 10:30 a. m., Sunday school 2:30 p. m., Christian Endeavor 6:45 p. m., preaching 7:30 p. m.

Lynch M. P. Church, Rev. Avery Donovan, pastor. Sunday school 2:30 p. m., preaching 3 p. m.

St. James M. P. Church, Rev. Avery Donovan, pastor. Sunday school 10 a. m., preaching 11 a. m. The sacrament of the Lord's Supper at each church. This being the last Sunday of the conference year I will appreciate meeting of the members and friends of this charge.

"Every baby in Kent County for Christ." This is to be the slogan of every Children's Division Worker of Kent County for April and May. There are one hundred twelve thousand little people in Maryland under four years of age. Of these eighteen thousand are on a Cradle Roll and ninety-four thousand are not. It is not the will of the Father that one of these little people of our State should perish.

God help us teachers, all to live aright. And may our lives all truth and love untold. Since life for us no loftier aim can hold. Than leading little children in the light.

Kent county is now in a Cradle Roll Campaign. At the annual County Sunday School Convention held last September there were 364 babies enrolled in Kent. Of the twenty-nine Protestant Sunday Schools but four were out Cradle Rolls and plans were made at once to have Cradle Rolls started in these schools. Of this Cradle Roll State-wide Campaign, Kent's quota is 100. Of this hundred, twelve have already been reported. Not only babies from Christian homes are to be enrolled but especially those from homes where there is no church affiliation. If your baby has not received an invitation to join a Cradle Roll by May 1st, call Mrs. Harvey B. Moore, Betterton, saying to which church you belong and if not a member, state which church you prefer and she will see that your baby's name is added to the other Cradle Roll babies of Kent county.

IN MEMORIAM

In loving remembrance of James A. Casey, who died four years ago Feb. 26th, 1918, and Florence M. Hogsans, who died 26 years ago April 1st, 1896. Loved in life, in death remembered. Just a thought of sweet remembrance, Just a memory fond and true, Just the love and sweet devotion, Of the loved one's who think of you. By Wife, Mother, Daughters and Sisters.

Fines totaling \$2791 were imposed last week for infractions of the Motor Vehicle Law. 1371 was collected in Baltimore and \$1420 in 32 towns in the State. Among the culprits were six women drivers, of Baltimore charged with minor faults. Four drunken drivers were fined \$101.45 each, three in Baltimore and one at Bel Air. Five licenses were revoked, six suspended and four refused.

Kennedyville M. P. Church, Rev. J. F. Wooden, pastor. Services for Sunday, April 2nd. Sunday school at 10 o'clock, L. W. Ford, superintendent. The monthly missionary service will be in charge of Miss Catherine Pennington's class. At the 11 o'clock communion and reception of members. The Christian Endeavor service at 7:30 will be led by Miss Emma C. Shafer, followed by a talk on the topic by the pastor.

The Chestertown Methodist Episcopal Church, the Rev. Omar E. Jones, pastor. Services for Sunday, April 2nd: Public worship 10:30; Sunday school 2:15; Epworth League 6:45; evening public worship 7:30. Subject of morning sermon "How It Was Done." Evening subject "Laborers Together With God." Topic for Epworth League "Sir, We Would See Jesus," Leader, C. H. Jefferson. Every member canvass and Distribution of Envelopes on Sunday afternoon. During the week following Sunday the church will be at the disposal of the Methodist Protestant Conference.

Galena M. E. Church, Geo. E. Starling, pastor. Services: 10 a. m., Sabbath school. Let us begin conference year right and be present at Sunday school and on time. 11 a. m., address to Kent Lodge No. 74 of I. O. O. F. who will attend service in a body. All neighboring Odd Fellows are cordially invited to attend this service. 7 p. m., Epworth League service. 7:30 illustrated lecture by pastor. This lecture is the beginning of a series which purpose to show the world's need and the church's obligation today. "Forward" is the slogan for this charge this year. Get in at the start. Join us in all our services Sunday.

Each adult Bible class teacher is kindly requested to report to Mrs. Laurence Brown, chairman of the adult department of the Kent County Sunday School Association, the number of scholars on the roll at November 1st, 1921. Also the number on the roll at March 26, 1922. The quota for the county has been set at 75, and the increase in attendance between these dates will be reported to the State Sunday School Association as soon as they are received. This applies only to those Sunday schools that are members of the county association.

Kent Charge, M. E. Church, South, Brother Kirby will preach his farewell sermons at Chestertown Sunday at 11, and at Trinity, Millington, at 3 and 7:30 p. m., Sunday school and League services as usual. A welcome to all at "The Friendly Church."

Gill Bros.' new building on Cross street is nearing completion. It is stated that the second floor has been leased to the State for an armory for use of the local military company.

Charles C. Schreiber is erecting a two story brick addition to his dwelling and store property on High St.

OPEN 7.30 A. M. CLOSE 6.00 P. M.

H. F. JEFFERSON

"THE LADIES STORE"

Chestertown, Maryland.

THE experience of 18 years is a great builder. There is no teacher like experience. A very important business is the dressing of women. To have a standard and stick to it is another important item, this we have followed. Never was it more important for people to stop, look and listen than to-day. It takes an expert to tell when cost comes down and not quality. We are trying to give you the advantage of our experience all the time. Examine our Quality, Prices and compare them with others; not one, but both, and you will spend your money with us.

SHOES! SHOES!

Here is just what you were waiting for. We are showing some very pretty footwear, right up to the minute, which will suit all those that like to be neatly shod.

SOME SUGGESTIONS

- A neat one Strap Pat. Kid Flapper Pump, never slip buckles, low heels, selling at... \$6.50
The Newest Shade Brown Calf Pump, one strap, sport heel, selling at... \$8.50
Some Genuine Rus. Calf Oxfords of a two tone character, sport heel... \$8.50
We know you will like a Pat. Colt, Plain Toe Oxford, fine for dress or dancing... \$6.50

OUR COMFORT DEPARTMENT

We are capable of fitting you with Comfortable Shoes, especially those on their feet continually. Our Arch Support Shoes are great comfort for those who need them. Come in and ask the advice of our GRADUATED FOOT SPECIALIST.

International Made-To-Measure Clothes



NOW is the time to order your

NEW SPRING SUIT FOR EASTER

Come and see the wonderful array of beautiful Spring Woolens we have and order your suit

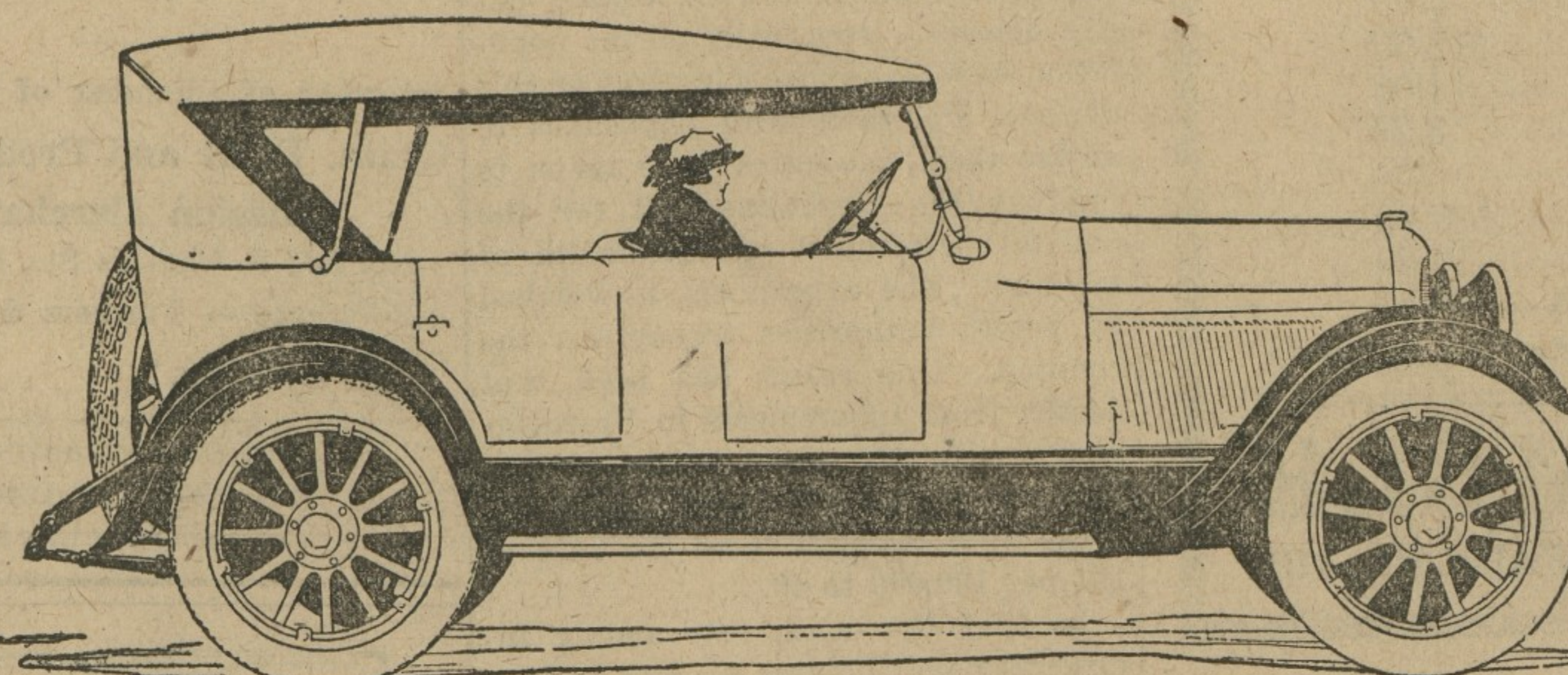
MADE-TO-MEASURE

JAS. E. NEWTON Under Voshell House Chestertown, Md.

Cleaning, Pressing, Repairing, Altering, Dyeing done here.

PAIGE

THE MOST BEAUTIFUL CAR IN AMERICA



Announcing the Complete Line of Paige and Jewett Cars

We are pleased to announce our appointment as local dealers for the Paige-Detroit Motor Car Company, manufacturers of a complete line of passenger cars, including the Jewett.

This is the most important business venture we have ever made. It is nothing less than a great opportunity—an opportunity for ourselves and for every present and prospective car owner in this community.

The Paige line is an established product with a history of more than 12 years of country-wide popularity. It is made by a company of such great financial strength and extensive manufacturing facilities that the quality and value of the cars have remained unsurpassed.

The popularity of the Paige is well earned. It is a sound product and a sound investment. It is a car that has always made good.

We count ourselves as particularly fortunate in securing the Paige franchise at this time. The 1922 line is the finest the company has ever turned out, with a remarkable record for performance.

At the new reduced prices these cars are a great investment opportunity—just that. They are offered to you on two chassis, the New Series 6-66 and the New Series 6-44.

There may be finer cars on the market than the 6-66, but you can't prove it on the road. The 6-66 has

made automobile history on track and hill. It was a 6-66 Dayton model that broke every world's stock chassis speedway record from 5 to 100 miles on the Uniontown Track. It is a car that is unmatched for power, speed and stamina. It is justly called Master of the Highway.

The 6-44 is a smaller brother of the 6-66. There is a difference in power, wheel base and price. But both cars have one thing in common—the spirit and beauty of a Kentucky thoroughbred.

We are also offering the Jewett, the new light six, only recently announced, yet already a sensation in motordom.

The Jewett, designed by Paige engineers and built in Paige shops is the result of long investigation and thorough study. It is a 50-horsepower, six cylinder car of 112-inch wheel base and ample room for five people. It is a car any motorist would be proud to own. Yet the Jewett touring car sells for only \$1065 f. o. b. factory.

We are backing this complete line of automobiles with intelligent and competent service. It is and will be our policy to make your interests ours.

We want you to examine these cars at your earliest opportunity. Better still—let us give you a ride. Come in and select a car for a demonstration.

Table with 2 columns: Car Model, Price. Includes models like 6-66 Lakewood, 6-66 Larchmont II, etc.

Table with 2 columns: Car Model, Price. Includes models like 6-44 Touring, 6-44 Sport Type, etc.

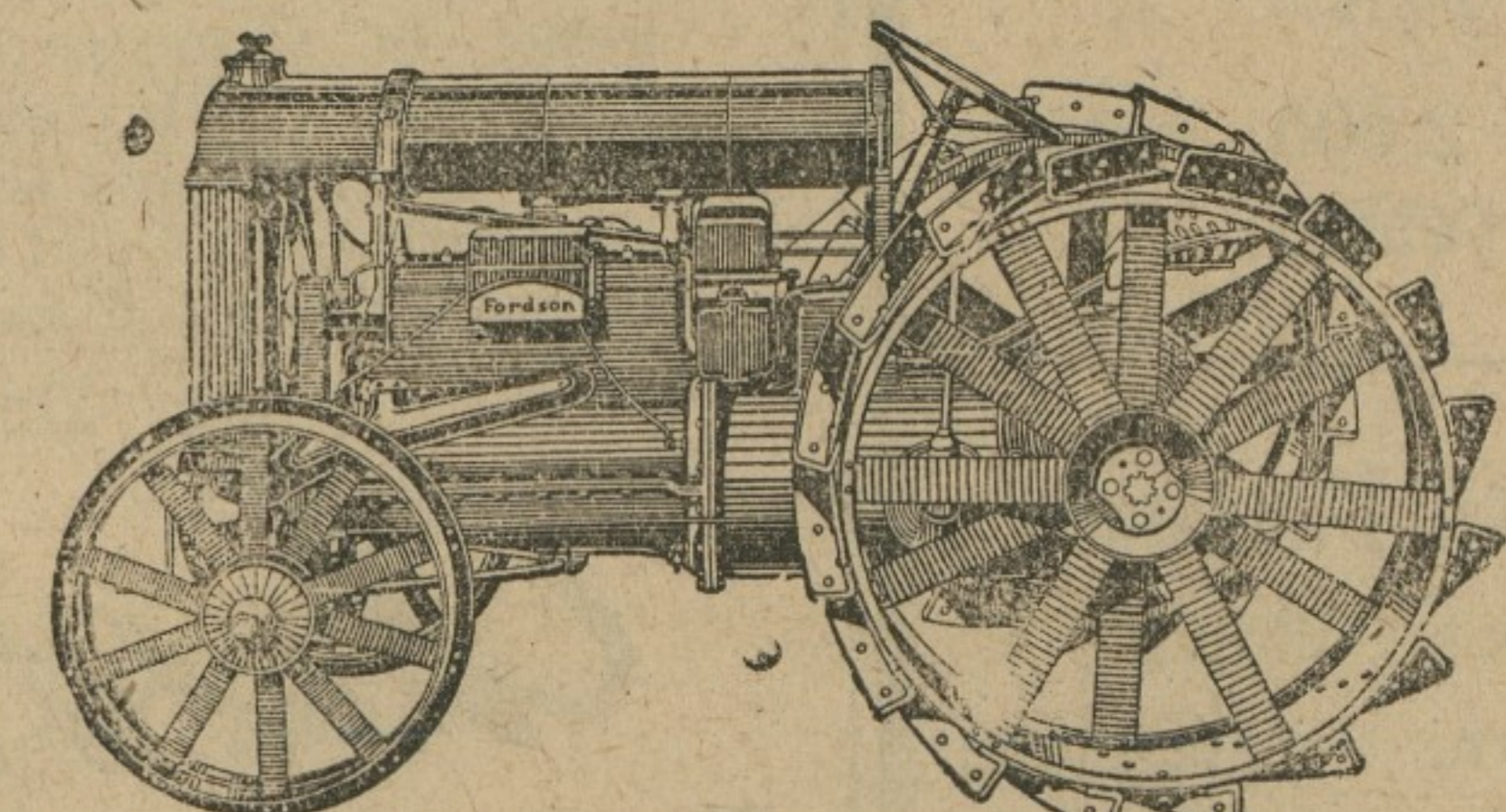
John H. Clendaniel, Jr. Chestertown, Md.

REDUCED PRICE

Fordson Tractor

\$395

F. O. B. Detroit.



Think What It Means

One man or boy can do in two days with a Fordson as much as a man can do in 6 days with three mules. Fuel cost per day \$2.25. Overhead cost per year—for fuel, repairs and depreciation—not to exceed overhead cost of 2 mules.

Are The Results Worth Comparing?

Table comparing costs of 3 mules vs Fordson tractor. Columns include Operating Cost, Fuel and medicine, Depreciation, Repairs for year, Interest.

Operating costs for the next 12 months will determine the profit made by you. The fellow who realizes greater production at reduced costs will make some money, and the one who follows the lines of grandfathers will begin to think.

Over \$200,000 Fordsons are in the field to-day. Ask any owner which is cheaper—mules or Fordson. A \$395 Fordson against 9 mules and three men per day. Is there any real comparison for economy?

Call On Us To-day To Demonstrate These Facts

FORD-FORDSON

Authorized Sales and Service

- C. A. GOODWIN Chestertown, Md.
DAVIS CO. Galena, Md.