

**COAL**  
**QUALITY ATTENTION and SERVICE**  
 USE  
**Domestic Egg Coal**  
 SATISFACTORY  
 HOUSEHOLD FUEL  
 CLEAN ECONOMICAL  
 PHONE 149  
**C. W. KIBLER & SONS**  
 Chestertown, Maryland

**Toulson's Drug Store**  
 JUST RECEIVED OUR  
**Sage and Pepper**  
 PUREST MADE  
 School Supplies in abundance  
 an immense line of  
 tablets, pencils, companions,  
 compositions books, loose  
 leaf ledgers etc.  
**COTY'S HOUBIGANT'S**  
 perfumes a full line  
 Purest drugs always found at  
**Toulson's Drug Store**  
 Chestertown, Md.

**FERTILIZERS**  
 Old reliable brands—the kind  
 that drill right — Truthworthy  
 (2-8-5); Propagator 2-8-2);  
 Crop Producer (1-9-3); Try Me  
 14-9-2); 12-3, 12-5, 10-5. High  
 Grade Acid Phosphate. Delivered  
 on your farm by truck  
 Place your order now.  
**SEED** — New Alfalfa, Crim-  
 son Clover, Rye. We are book-  
 ing orders for Timothy and  
 Clover Seed.  
**LIME** Hydrated, Lump,  
 Shell. We carry hydrated and  
 shell lime in stock.  
**SALT** — Rock and Fine. Get  
 our wholesale prices.  
**MASSEY & WILMER**  
 Phone 193 Chestertown, Md.

**Stam Drug Co.**  
 The Prescription Store  
 A full line of Squibb'  
 Household Products.  
 Cigars and Cigarettes.

**TOILET ARTICLES  
 AND PERFUMERY**  
 Popular Priced Fiction  
 Writing Paper, Ledgers  
 and Day Books.

**Stam Drug Co.**  
 Phone 30 Chestertown, Md.  
 S. Scott Beck, Attorney.  
**ORDER NISI**  
 Harry Griffith  
 vs.  
 Louis H. Dreka  
 In the Circuit Court for Kent County,  
 In Equity, No. 1779.

Ordered, this 19th day of Nov. 1925  
 by the Circuit Court for Kent County  
 in Equity, that the sale of the personal  
 property mentioned in these  
 proceedings made and reported by  
 Harry Griffith, Trustee, under Decree  
 of Trust from Louis H. Dreka to  
 Harry Griffith, Trustee, be ratified  
 and confirmed, unless cause to the  
 contrary thereof be shown on or be-  
 fore the 22nd day of December next;  
 provided, a copy of this Order be in-  
 serted in some newspaper printed  
 and published in Kent county, once  
 in each of two successive weeks be-  
 fore the 7th day of December next.  
 The report states the amount of  
 sales to be \$321.52.  
 ROBERT R. AYRES, Clerk.  
 True Copy—Test:  
 n21-2t ROBERT R. AYRES, Clerk.  
**APPLES**  
 Stayman's Winesap Apples for sale  
 delivered. SPENCER BIDDLE, Ches-  
 tertown R. R. 3. Phone 815-P12.  
 o24-tf.

**ARLINGTON L SPARKS**

Next door to WM. M. Culp and A. L.  
 Sterling, CHESTERTOWN, MD., and we  
 are ready to serve you.

*The House of Quality  
 and Service*

New Dress Goods in all the Newest and  
 Most Popular Shades.  
 Fine Assortment Ladies' Waists.  
 Everything for Ladies, Girls and Children.

**ARLINGTON L. SPARKS**

**The Mutual Fire Insurance Co.**  
 OF KENT COUNTY, MD.

Insures Property Against Fire And Lightning  
 All Policy Holders Participate In The Company's Profits.

Conservatism and caution its motto. Nearly three million dollars  
 worth of property insured.

**DIRECTORS**

R. G. Nicholson, J. D. Bacchus, F. C. Usilton, T. W. Eliason, Jr.,  
 Allan A. Harris, Eben F. Perkins, Edward W. Emory, P. Medford  
 Brooks, Chestertown; Howard Turner, Betterton; Wm. A. Hyland  
 Galena; Dudley G. Roe, Sudlersville; James P. Brown, Church Hill.

APPLICATION FOR INSURANCE MAY BE MADE TO  
 E. C. Bowers, Lynch, Md.; Joseph Downey, Rock Hall; B. W. Dulin  
 Millington; Charles H. Jefferson, Chestertown; Frank H. Ruth, Galena  
 G. W. Owens, Betterton; Allan S. Walls, Sudlersville; Howard Turner  
 Betterton; F. E. Thomas, Stevensville.

**FRED. G. USILTON, President.**  
**EBEN F. PERKINS, ec.-Treas.**

**SECURITY SERVICE**

**We Sell Bonds That Banks Buy**  
 And discourage the purchase of any security  
 that will not stand investigation.

Consult Your Local Banker

It costs little to obtain sound advice.

**C. T. WILLIAMS & CO.**

Incorporated  
 Investment Bankers  
 Fidelity Building, BALTIMORE, MD.

**GULP GULP  
 LUMBER**

Everything to Build anything

Working Plans Free  
**AT OUR OFFICE**

Full Stock of  
**BUILDING MATERIALS**

**W. S. & A. M. CULP**

Chestertown, Maryland.

**MAIL US YOUR  
 SPECTACLE**

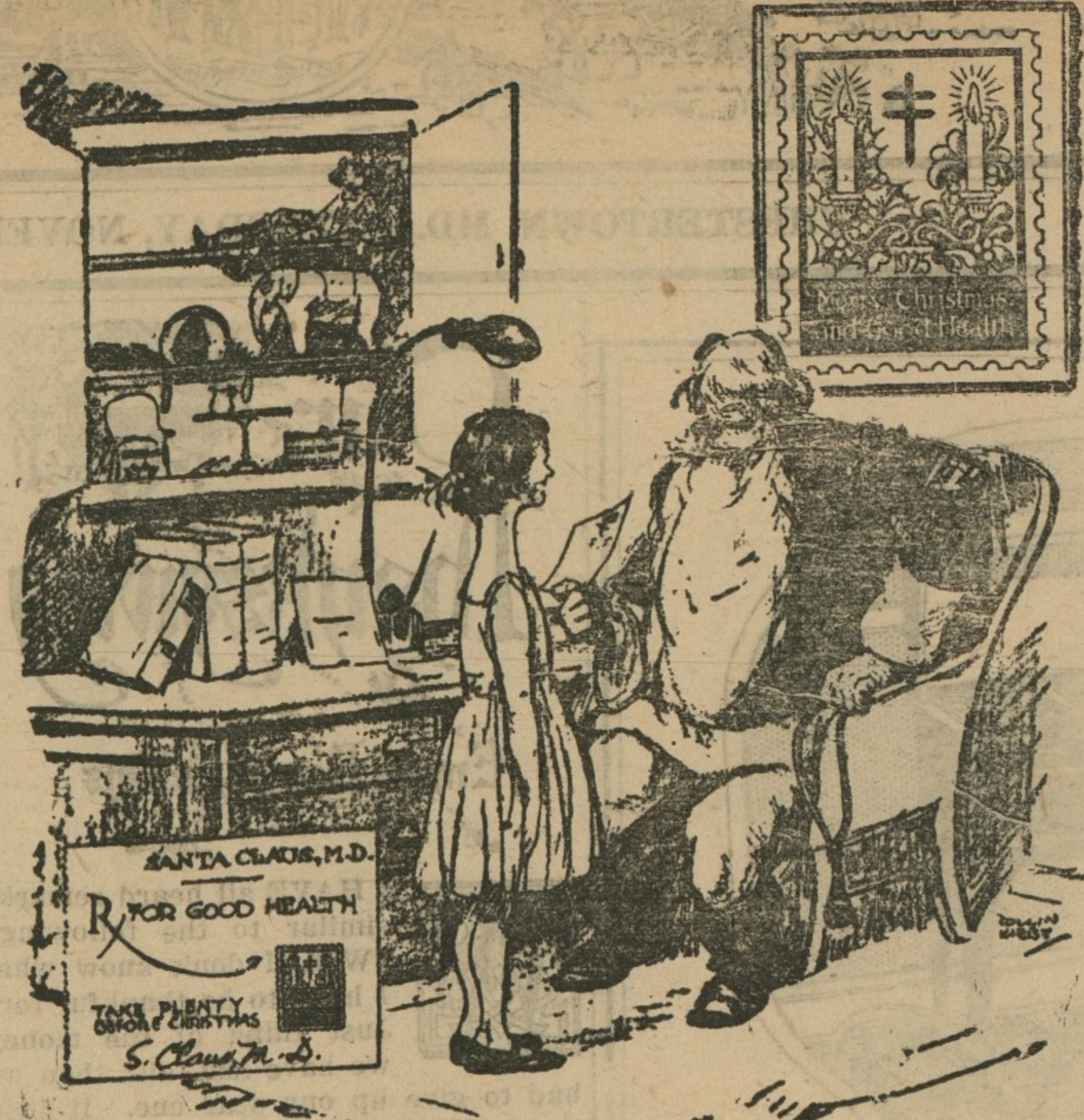
And Eye Glass Repair Work  
 Prompt, Accurate and  
 Reliable Service  
 at moderate cost

**MILLARD F. DAVIS**  
 Wilmington, Delaware  
 Established 1879  
 Mar-ly

**BARLEY FOR SALE**  
 We have nice clean, bright Barley  
 for sale. Best for fall and winter  
 pasture. Price \$1.00 bushel.  
**ADAM SCHAUBER, Chestertown,  
 Maryland, Aug 16-17**

**M. deK SMITH, JR.**  
 Assoc. A. A. S. C. E.  
 Civil and Consulting Engineer  
 Plans, Surveys, Estimates & Report.  
 Chestertown, Md.

**The Best Gift of All—  
 Christmas Seals**



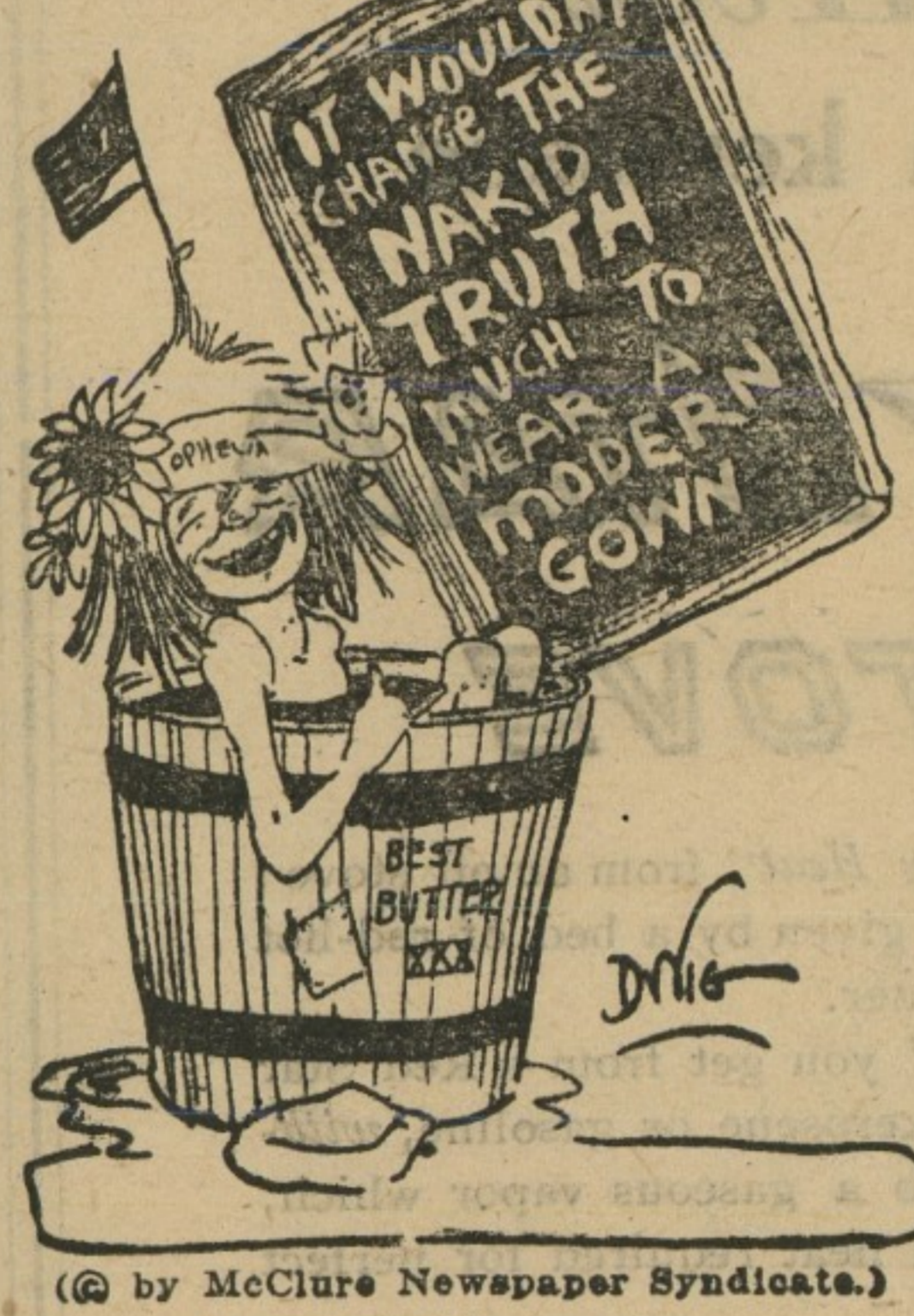
A Prescription for Health

**MAE MURRAY**



Mae Murray, the brilliant movie  
 star, was born in Portsmouth, Va. She  
 moved to New York when a very small  
 child. At the age of fifteen she made  
 her first appearance on the stage and  
 became one of the most remarkable  
 dancers. At the height of her success  
 on the stage she entered the pictures,  
 and her many successes are well  
 known.

**British Doctor Gives  
 New "Cures" for Ills**

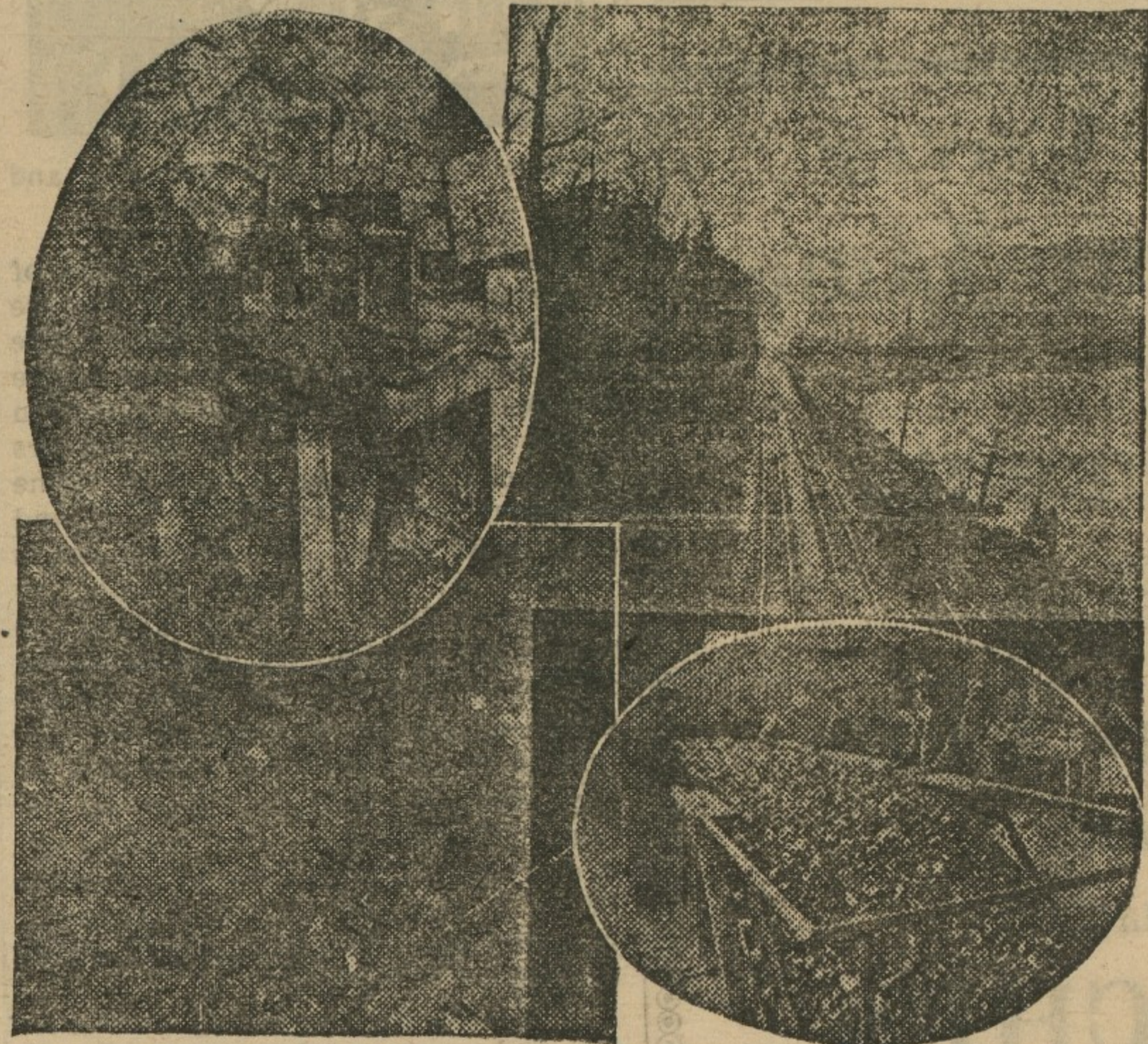


So Do We  
 He—Do you believe in the trans-  
 migration of souls?  
 He—No; I hold with Philostrates  
 that the element of chance enters  
 into the Oedipus complex. — Yale  
 Record.

**Many Kinds of "Gentiles"**

The term "gentile" has different  
 meanings among different peoples. To  
 the Jews, it is one of a non-Jewish  
 nation or non-Jewish faith; with the  
 Christians, one neither a Jew nor a  
 Christian; a heathen; in India, non-  
 Mohammedan; among Mormons, non-  
 Mormons.

**The Source of Power**



Way back in a coal mine the miner wants quick communi-  
 cation with the office. How does he get it? He telephones, for most  
 modern mines are equipped for this service.

Coal trains are familiar sights on the railroads today.  
 Almost unlimited quantities of "black diamond" can be found  
 in America. This miner is loading coal at the source of supply.  
 Mine tipples feed the waiting gondolas with steady streams of  
 coal that give health and comfort to millions of homes and keeps  
 steam up in thousands of factories.

King Solomon was the first coal  
 man. But Solomon in all his glory and  
 wisdom had his troubles just as coal  
 men have today, for according to the  
 Bible, Proverbs XXVI-21, "As coals  
 are to burning coals and wood to fires,  
 so is the contentious man to kindle  
 strife." This sentence was written  
 during the reign of Solomon in 1016,  
 B. C. His mines were located near  
 Beirut, Syria, where, strange to say,  
 coal is still being mined.

Solomon with a thousand wives to  
 provide for, must have had a sweet  
 time keeping the coal bins filled and  
 providing warmth for his many house-  
 holds. He, no doubt, experienced the  
 same troubles in having an adequate  
 supply on hand during the seasons of  
 the year that heat was required that  
 people do today, for undoubtedly the  
 methods of transportation in those  
 days were limited, and coal could only  
 be transported in small quantities  
 from one place to another. Then, also,  
 the problem of communication was a  
 difficult one for in that day and time  
 messages were sent by bearers, and  
 usually a whole delegation went along  
 to carry presents of wines, silks and  
 incense to put the recipient in a good  
 frame of mind to receive the actual  
 message, and, of course, this required  
 much time and delay.

Today the coal operator and dealer  
 are more fortunate, for with modern  
 methods of communication and trans-  
 portation they are able to keep in  
 touch with supply and demand, and  
 with this knowledge, furnish an ade-  
 quate supply of fuel as it is required.  
 As the prices fluctuate they are fa-  
 miliar with conditions and gauge their  
 operations accordingly.  
 When your coal supply gets low you  
 get in touch with your dealer by tele-  
 phone, and soon the big trucks are  
 unloading the necessary fuel in your  
 cellar or factory. But the operations  
 that make this possible are numerous  
 and cover much detail.  
 The car supply and adequate rail-  
 road facilities are necessary to the  
 movement of coal from the base of  
 supply to the consumer, and every-  
 where along the line the telephone, as  
 a means of communication, is tied-in  
 with transportation. The United  
 States has the best communication  
 and transportation systems that the  
 world has ever known. No nation,  
 state or community has ever prospered  
 that did not have these facilities de-  
 veloped to a high degree.  
 Modern railroads depend on the tele-  
 phone for train dispatching, in fact  
 from the dark interior of the coal  
 mine, miles back under the mountain,  
 to the superintendent's office, and all  
 along the route every operation that  
 brings this fuel to your coal bins, is  
 dependent on this modern means of  
 communication.

**Earthquakes Peril  
 America's Big Cities**

About the last thought, probably,  
 that occurs to the average American  
 is that he may be living in an area of  
 earthquake danger. As a matter of  
 fact, earthquakes occur in the United  
 States every year—many of them.  
 More than that, writes Arthur Selwyn  
 Brown, Ph.D., LL.D., in Popular  
 Science Monthly, they occur in places  
 that point to the existence of definite  
 lines of earth weakness passing  
 through or near some of our greatest  
 cities—New York, Washington and  
 Boston, for example, lie along one of  
 these lines, and consequently are not  
 removed entirely from the danger of  
 earthquake.  
 Other similar lines are found  
 stretching across the continent from  
 southern California to the Atlantic  
 coast, sweeping up through the Mis-  
 sissippi valley to the Great Lakes,  
 cleaving the center of New England.  
 Within these areas live millions of  
 people.  
 A study of the annual reports of  
 earthquakes in the United States  
 shows that there is an important line  
 of earth weakness starting in the  
 southern parts of California, traversing  
 Arizona, following the thirty-fifth  
 degree of latitude, sending a spur up  
 the Mississippi and Ohio rivers, then  
 running eastward to the sea, and  
 thence following the Atlantic coastal  
 ranges up to Prince Edward island  
 and Newfoundland.

**Some Long Distances**

In our finite conception of things it  
 is hardly possible for any of us to  
 imagine the vastness of the universe.  
 It is this restricted point of view that  
 makes it difficult for us to appreciate  
 the practical value of developments  
 beyond the earth. Our sun is about  
 93,000,000 miles away, and to the aver-  
 age person that appears to be quite  
 some distance.  
 We think that even our nearest  
 neighbor, the moon, is a long way off  
 from us because the intervening gap is  
 about 240,000 miles. But when we  
 think of these bodies in terms of other  
 celestial objects it becomes apparent  
 how close we really are to our source  
 of sunlight.  
 The reflected light from the moon  
 reaches us in one and a quarter sec-  
 onds, while even the light from the  
 sun, traveling at the rate of 186,000  
 miles a second, gets to us in eight and  
 a third minutes.  
 All this represents rapid service in  
 view of the truth that the light from  
 the nearest star to the earth requires  
 more than four years to reach us.—  
 Floyd W. Parsons, in the Saturday  
 Evening Post.

**Geysers of Boiling Mud**

Suddenly subsiding without the  
 slightest warning—a big area of  
 ground in front of a Maori meeting  
 house at Whakarewarewa, New Zea-  
 land, from a level plain suddenly be-  
 came a huge cauldron of boiling water,  
 15 feet deep. Heavy steam clouds is-  
 sued from the cavity. In the Valley of  
 Whakarewarewa many forms of ther-  
 mal activity are found. Some of the  
 geysers throw columns of boiling water  
 100 feet into the air. A Maori com-  
 munity has built nondescript dwellings  
 among the precarious surroundings of  
 mud volcanoes and boiling springs.  
 The natural heat of the water and  
 mud serves them instead of fires for  
 cooking.—Family Herald.

**History Told by Trees**

The people of long ago did not  
 trouble to say much about the weather  
 in their writings, but the botanists do  
 not need the help of records. The  
 books they study are the trunks of  
 trees. When a tree is cut down its  
 age can be found by counting the num-  
 ber of rings between the heart and the  
 bark. Each of these rings represents  
 one year of growth, and scientists be-  
 lieve that we can decide whether a  
 specified season was late or early, dry  
 or wet, by studying the thickness and  
 consistency of the fibre of the cor-  
 responding circle.

**Truant's Good Excuse**

Schoolboys are extremely practical  
 in these days. The headmaster of a  
 school in an English district re-  
 cently received a note apologizing for  
 a boy's absence from school because he  
 was repairing his boots. The master  
 was naturally interested, and upon in-  
 spection was astonished at the skillful  
 way in which this lad of thirteen had  
 soled and heeled and patched the  
 boots he was wearing. Handwork is  
 not taught in vain apparently.

**DURDING & SATTERFIELD**

We make a specialty of insuring  
**HAY and WHEAT**, either in barns  
 or in stacks. Remember the "HOME"  
 is the largest American Company,  
 made so by a liberal policy.  
**ROCK HALL AND  
 CHESTERTOWN**

**NOTICE**

Will buy all junk and pay highest  
 market prices for same. Pay cash.  
**HARRY GORDON, Chestertown, Md.**

**SHIP BY TRUCK  
 THE HOGAN'S EXPRESS**

Fast freight service daily—Balti-  
 more, Rock Hall, Fairlee, Chestertown  
 and Church Hill.  
**FOR BALTIMORE**  
 Leave Church Hill 5.30 P. M.  
 Lv Chestertown 5.00 a. m.  
 Lv Fairlee 5.20 a. m.  
 Lv Rock Hall 6.45 a. m.  
**FROM BALTIMORE FOR THE FOL-  
 LOWING POINTS:**  
 Leave Baltimore 1 p. m. for Rock  
 Hall, arrive 4 p. m.  
 Leave Baltimore 1.30 p. m. for  
 Chestertown, arrive 4.30 p. m.  
 Fairlee at 4.15 p. m. and Church  
 Hill at 5.15 p. m.  
 Thursday, live stock day, leave  
 Chestertown 9.00 a. m., Rock Hall  
 11.15 a. m. to connect with 11.30 a. m.  
 ferry.  
 Local and long distance hauling.  
 We move anything, anywhere, any-  
 time.  
 Headquarters: Baltimore Office 434  
 N. High street. Cor. Hillen. Phone  
 Calvert 1961.  
 Residence, Rock Hall, Md., Phone  
 Rock Hall 50.  
 Chestertown warehouse at Owen C.  
 Smith's Garage, High St.  
 Phone 189.

**STERLING'S PHARMACY**

**EASTMAN  
 KODAKS  
 and  
 FILMS**  
 Developing and Printing

**Sterling's Pharmacy**  
 (THE REXALL STORE)  
 Chestertown, Md.

**The Kent Building  
 & Loan Company**

offers special inducements for  
**SAVING MONEY.**  
**EASY PAYMENTS**  
**REGULAR DIVIDENDS**  
**SAFE INVESTMENT**  
 Office at Court House. Open  
 every Monday evening from  
 6.45 to 7.45 p. m.

L. B. RUSSELL, President.  
 FRED. G. USILTON,  
 Vice-President.  
 CHAS. N. SATTERFIELD,  
 Secretary-Treasurer

**Mark Every Grave  
 MONUMENTS AND TOMBS**



Estimates furnished for any-  
 thing in stone, from a small  
 Marker to a Mausoleum.

**Chestertown Marble and  
 Granite Works**  
 Phone 276 J. W. KIRBY, Prop  
 Chestertown, Md.

**NOTICE TO CREDITORS**

Notice is hereby given that the Or-  
 dersigned has obtained from the Or-  
 phans' Court for Kent County letters  
 Testamentary on the personal estate of  
**REBECCA STRONG HUSTON**  
 late of said county, deceased.  
 All persons having claims against  
 said deceased's estate are hereby  
 warned to exhibit the same, with the  
 proper vouchers thereof, to the un-  
 dersigned on or before the 21st day  
 of May, 1925, otherwise they may  
 by law be excluded from all benefit  
 of said deceased's estate.  
 All persons indebted to this estate  
 must settle at once.  
 Given under my hand this 17th day  
 of November, 1925.

**HERBERT E. PERKINS,**  
 n21-4t  
 Executor.

**REWARD**  
 \$10.00 reward for information  
 leading to the arrest and conviction  
 of any person hunting or trapping  
 with dog, gun or otherwise upon the  
 lands or shores of the undersigned.  
**SAMUEL M. FORD, HERBERT S.  
 FORD, 641-6t**