

### NEW PASTORS FOR MANY M. E. PULPITS SOON

The sixty-first session of the Wilmington Conference of the M. E. Church, which will begin in Harrison Street M. E. Church, Tuesday night, April 2, is possibly of more than usual interest to the ministers as well as laymen of the conference owing to the necessity for selecting four district superintendents, and the probability of a much larger number of changes of pastors than usual.

Under the church law no district superintendent can serve longer than six years in that capacity. Therefore the present incumbents, the Revs. J. W. Colona, Wilmington; O. E. Jones, Middletown; W. E. Gunby, Dover, and E. H. Dashiell, Salisbury, Md., will be returned to the pastorate.

Just who will succeed them is guesswork, as the appointments will

be made by Bishop W. F. McDowell, the presiding bishop. So far as is known he has not confided his intentions to any member of the conference, although one thing seems assured, and that is that the retiring superintendents will be given good appointments.

While many names have been mentioned by the ministers as possible successors to the present superintendents, and at this time, the following, in the order named, seemed most likely to be named by Bishop McDowell to the offices: The Rev. John L. Johnson, pastor of Harrison Street Church, Wilmington, where the conference will be held; the Rev. Disston W. Jacobs, Newark; the Rev. W. E. Harrison, McCabe Memorial Church; the Rev. W. Habbart, Cambridge, Md; the Rev. A. S. Woodard, St. Paul's, Wilmington; the Rev.

Leonard White, Delmar; the Rev. M. S. Andrews, Wesley, Dover; the Rev. E. P. Thomas, Laurel; the Rev. J. W. Jones, Pocomoke City, Md.; the Rev. G. T. Alderson, Asbury, Wilmington; the Rev. John J. Bunting, Crisfield, Md.; the Rev. Theodor F. Beauchamp, Georgetown; the Rev. James A. Leach, Union, Wilmington; the Rev. Lewis B. Morgan, Richardson Park.

It also seems practically assured that each of the four district superintendents may be assigned to one of the following churches: McCabe, Harrison Street, Union, St. Paul's, Wilmington, Cambridge, Md., Pocomoke City, Md., Laurel, Salisbury, Md., or Delmar.

The Rev. John L. Johnson, the conference host, said this morning that he had been invited to return to Harrison Street, has accepted the invitation and that an appointment to the district is not even thought of by him.

As this seems to be a year for a general move many of the ministers who doubtless would not be transferred may decide that a change is advisable at this time, as indications point to few changes for three years in the conference after this session.

### EASTERN STAR INSTALLS OFFICERS

Chestertown Chapter Order of the Eastern Star was visited by the Grand Lodge of Maryland, the occasion being the constituting of the local Chapter, by worthy Grand Martrou, Miss Harrette Kerschoff and Worthy Grand Patron, J. Enos Ray, together with their associates.

The officers installed were as follows:

- Worthy Matron, Miss Ada Schreiber.
  - Worthy Patron, A. E. Culver.
  - Associate Matron, Mrs. Paul N. Adams.
  - Conductress, Mrs. Wm. R. Howell, Associate Conductress, Mrs. Charles F. Wheatley.
  - Marshall, Mrs. Joseph Downey.
  - Organist, Mrs. W. R. Strong.
  - Adah, Miss Mary Power.
  - Ruth, Mrs. Arthur Cooper.
  - Esther, Mrs. Oliver D. Wright.
  - Martha, Mrs. E. Scott Thompson.
  - Electa, Mrs. E. Scott Thompson.
  - Secretary, Miss Dorothy Woodall.
  - Treasurer, Mrs. Conlyn E. Noland.
  - Chaplain, Mrs. C. C. Schreiber.
  - Warden, Mrs. H. W. Fallowfield.
  - Sentinel, Oliver D. Wright.
- Interesting and instructive addresses were made by Grand Worthy Matron Kerschoff and Grand Worthy Patron J. Enos Ray. There were sixteen ladies represented from various sections of Maryland.

### FIRE CO. NEWS

In order that a Volunteer Fire Co. may become more efficient, requires the backing and help in every direction of the people in the community.

The Chestertown Volunteer Fire Company is, in this particular case, the one to be considered and in order that this company may not be handicapped in its undertakings, it kindly asks that the public in general, read this article very carefully, cut it out for future readings and try to do the things that are suggested and further assist rather than be an obstacle.

**Parking Of Automobiles**  
Never park your car within 15 feet of a fire plug, and avoid, in all cases, parking close to corners, for in case a Fire Truck Driver desires to make a turn, it makes him liable to hit your car and places the lives of the firemen on the truck at stake.

In case of a fire, remove your car from the vicinity at once, in order to give the boys all the room necessary, and, never, under any circumstances, rush to a fire in the way of the firemen. When you do rush your car to a fire and you do not belong to the company, you are holding up men who are unable to get on the truck.

**Making Room**  
Give the boys room while answering an alarm, whether they be on foot or in a car, and, in all cases, as soon as you hear the alarm, whether they be on foot or in a car, and, in all cases, as soon as you hear the siren or hear an engine coming, pull to the side and park your car at once; never take a chance that they have room, but give room and plenty of it.

The law of the State of Maryland is that you must pull to the right-hand side and come to a full stop on the approach of a Fire Truck and applies to Cities, Towns and Country Roads.

**Fire House**  
Keep away from the fire house doors when the alarm is sounded and avoid parking opposite the fire house.

**Damaging Fire Hose**  
Do you know that driving over a fire hose is rather expensive, and is liable, sooner or later, to make a weak place in the hose, thus causing it to burst? It may happen when a fire is at its height, and, besides, every foot of hose costs \$1.35 per foot.

**Narrow Streets**  
This is very important and especially on those streets such as Water, Queen, Mill, Kent and College ave. All automobiles should endeavor to park to the North, on the east side of these streets.

Water street between High and Maple ave., is very much congested at all times, and especially in the evenings, and on Saturday nights it is simply dangerous.

Now the proper parking of cars and the obstruction of traffic at all times is in the hands, not only of the Town Officers, but also of nine citizens, members of the Fire Company, and duly sworn in by the Sheriff of Kent County, to see that things pertaining to the safety of the public from fire loss and the proper regards for traffic in case of fire are observed.

Kindly assist these men in the performance of their duty.  
CHES. VOLUNTEER FIRE CO.

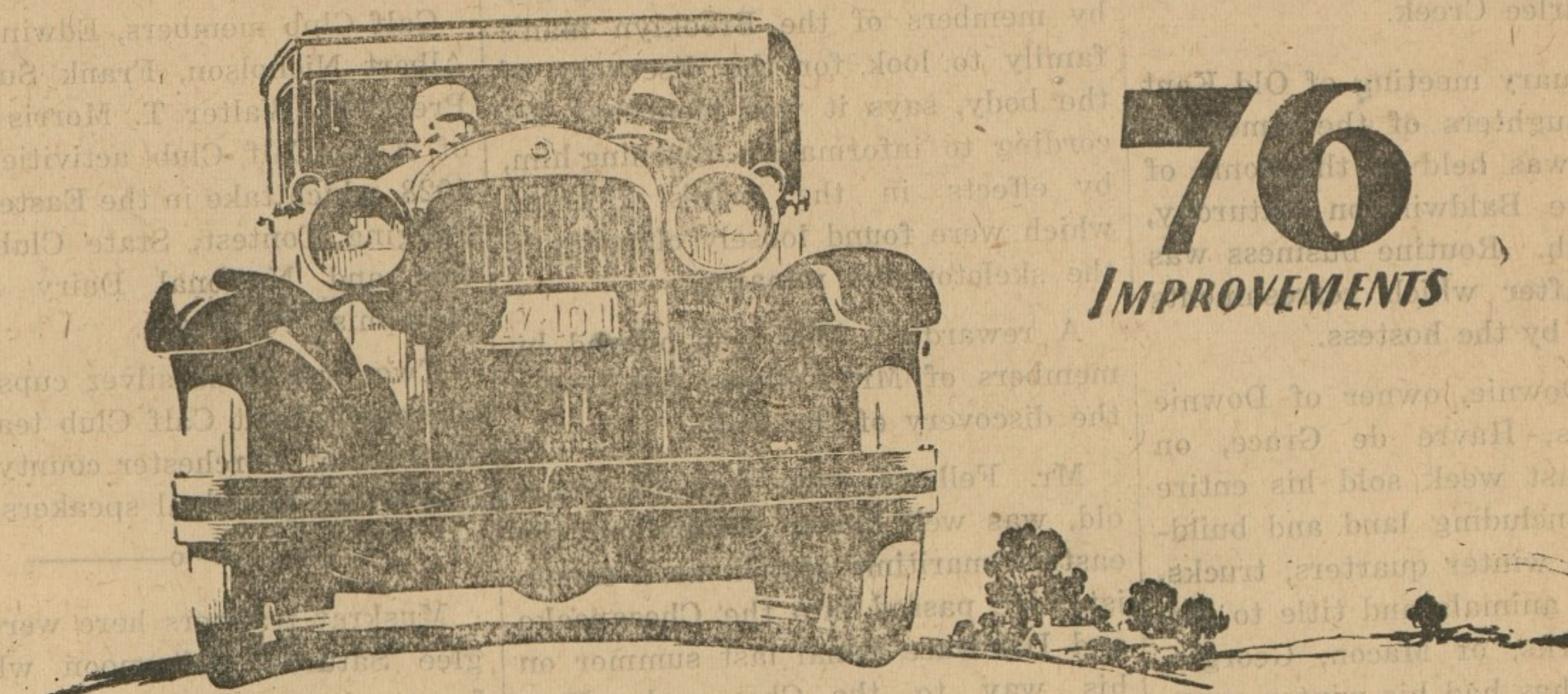
Mrs. Paine (at phone)—Oh, Doctor, my husband has taken rat poison. What shall I do?

Doctor Marvel—Just keep him inside until I get there and he will be all right. He can't die in the house, you know.

Dingbat—Didn't you say your dog's bark is worse than his bite?  
Goofy—Yes.  
Dinbat—Then for goodness' sake don't let him bark! He's just bitten me.

KENT NEWS \$1.50 PER YEAR

For Straight Legs For Baby—Give Scott's Emulsion



# 76 IMPROVEMENTS

## ESSEX THE CHALLENGER

NOW READY and bids 1,000,000 Super-Six Owners to pit it against all that motordom has to offer.....

24% Greater power—Over 70 miles an hour—Hydraulic shock absorbers all around—Effective double action four-wheel brakes, the efficiency of which is not affected by water or mud and which permit positive car control by the slightest foot pressure—Larger, roomier bodies—Seats easily adjustable to comfortable driving position—Electric gas and oil gauge—Instant starting regardless of weather—New radiator, with shutters, of course—All bright parts chromium-plated—New easier steering—Greater economy in fuel and oil.

IN FAST GET-AWAY—no car is expected. IN SPEED—anything the road offers up to 70 miles an hour. IN HILL CLIMBING—against any car you choose. IN APPEARANCE—match it for smartness with costlier cars. IN EASE OF DRIVING—note smoothness of motor—ease of steering—roadability and effectiveness of brakes. IN ENDURANCE—60 miles an hour all day long is well within its range.

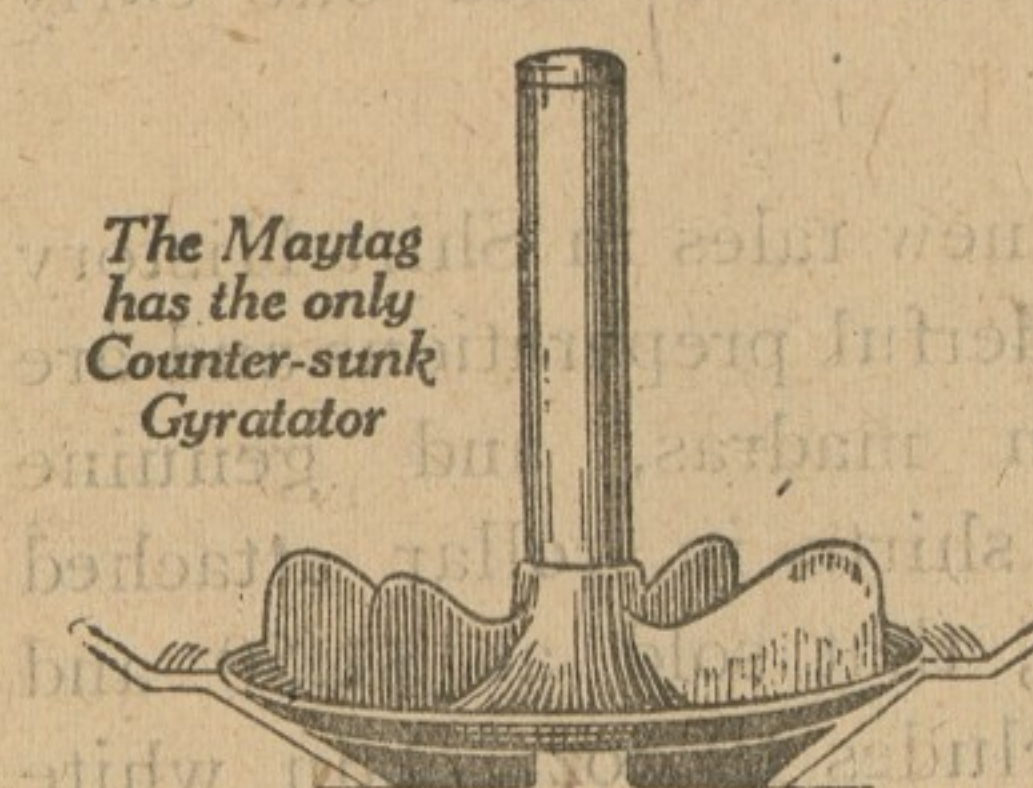
# \$695

and up at factory  
Standard Equipment Includes: 4 hydraulic shock absorbers—electric gas and oil gauge—radiator shutters—saddle lamps—windshield wiper—rear view mirror—electroclock—controls on steering wheel—starter on dash—all bright parts chromium-plated.

Coach \$695; 2-Pass. Coupe \$695; Phaeton \$695; Coupe (with rumble seat) \$725; Standard Sedan \$795; Town Sedan \$850; Roadster \$850; Convertible Coupe \$895

A BIG FINE SUPER-SIX  
**FRED T. ROBINSON**  
Phone 271. 207 Maple Ave., Chestertown, Md.

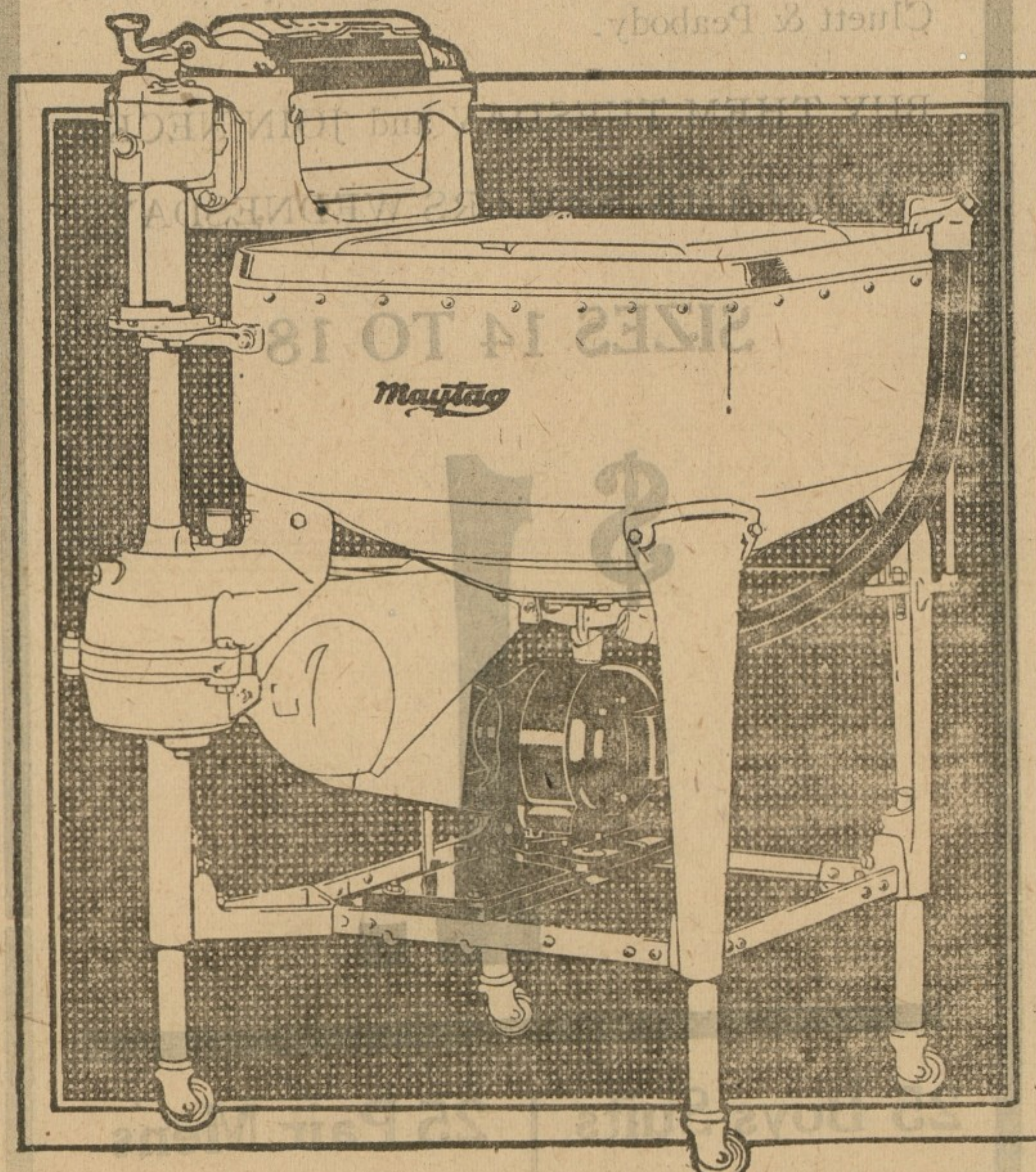
## IMITATION is the Highest tribute to Maytag Quality



THE Gyrafoam washer action, originated by The Maytag Company, changed the trend of washer design. Imitators by the score pay tribute to its success.

Old type actions make the clothes agitate the water. The Maytag Counter-Sunk Gyrafator makes the water agitate the clothes, forcing the water through the clothes, keeping the clothes separated and circulating instead of packed into bunches.

THE MAYTAG COMPANY, Newton, Iowa  
Founded 1893



Phone for a trial washing. If it doesn't sell itself, don't keep it. Deferred Payments. You'll Never Miss.

For homes without electricity, the Maytag is available with built-in gasoline motor.

Maytag Radio Programs  
W.B.Z.—A. Boston. K.D.A.—Pittsburgh. W.C.A.U.—Philadelphia. K.W.H.K.—Cleveland. W.S.A.I.—Cincinnati. K.V.W.—Chicago. W.C.C.O.—Minneapolis. K.O.L.—Omaha. K.M.B.—Kansas City. W.B.A.P.—Fort Worth. K.E.X.—Portland. K.F.C.—San Francisco. K.N.V.—Los Angeles. K.L.Z.—Denver. K.S.L.—Salt Lake City. C.F.C.A.—Toronto. K.M.O.N.—St. Louis. W.J.R.—Detroit.

Over 50 stations more on the schedule each week—see papers for date and hour.

**Maytag**  
Aluminum Washer

Cambridge, Md., Baldwin Maytag Company  
Geo. W. Baldwin, Chestertown, Md.

### The Interest Rate Is Important

TWO factors will determine the measure of your financial success:

1. Your own capacity to save.
2. Your money's capacity to earn.

Before you accept a lower yield, you owe it to yourself to look into the generous return and good security of the First Mortgage Bonds offered by The F. H. Smith Co. of Maryland, Inc.

6 1/2% is the coupon rate of these bonds which are secured by modern, income-producing city properties. DENOMINATIONS: \$1,000, \$500, \$100. Interest coupons payable semi-annually.

Return the coupon below for information about these 6 1/2% First Mortgage Bonds and other types of securities we handle.

**THE F. H. SMITH CO.**  
OF MARYLAND, INC.  
Investments

N. R. Queenerberry, Local Representative  
Box 307, Chestertown, Md.

NAME \_\_\_\_\_  
ADDRESS \_\_\_\_\_  
OCCUPATION \_\_\_\_\_

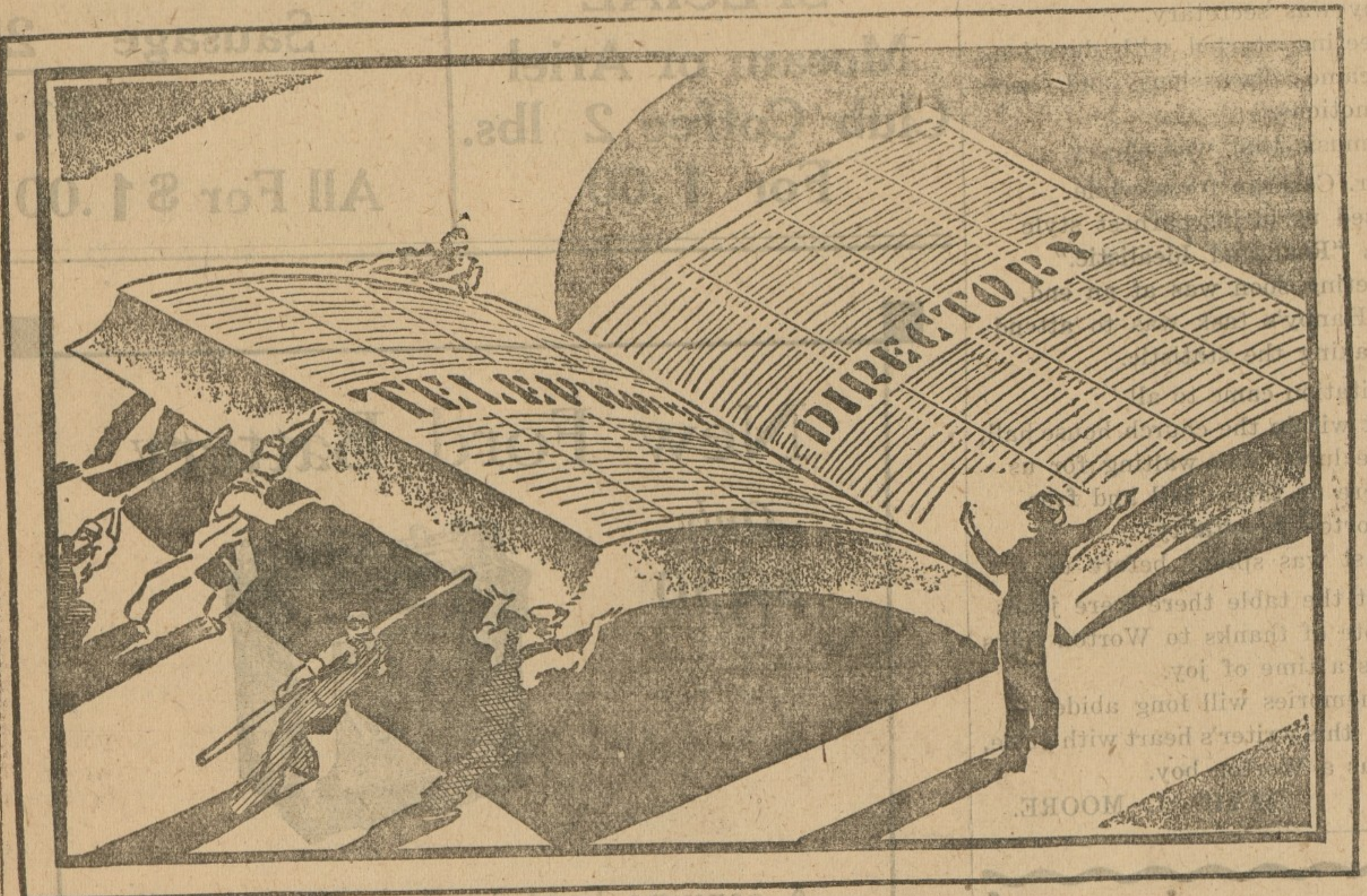


**Tuesday Feb. 19th, 1929**

Don't Miss This Opportunity TO SAVE MONEY

- "ALLENS" Parlor Furnace, \$135.00, Dollar Day \$100.00
  - Chicken Brooders, Dollar Day Discount 10%
  - Insulated Water Fountain \$4.50 Dollar Day \$4.00
  - High Grade Hatchet, \$1.45, Dollar Day \$1.25
  - House Paint, any kind, Dollar Day Discount 10%
  - Working Gloves, 60c. Dollar Day 45c
  - Ratchet Bitt Brace, \$1.50, Dollar Day \$1.25
  - 1 1/2 H. P. Engine, \$70.00, Dollar Day \$65.00
  - Tee-Gee SEELTITE, \$1.50, Dollar Day 75c
- A rubber preserver that will automatically SEAL all PUNCTURES to the size of a twenty penny nail.

**JONES & SATTERFIELD**  
CHESTERTOWN, MARYLAND



## CLOSING!

The new issue of the telephone directory is shortly going to press. Now is the time to get your name in it or change your present listing.

- If you are moving
- If you wish a new telephone
- If your listings need changing
- If you want to advertise in the new directory
- If you are a seller of Trade-Marked articles
- If you are planning any business or residence change that affects your telephone listings

### PLEASE

Get in touch with the nearest Business Office. You will find it listed in the front of your telephone directory.



**THE CHESAPEAKE AND POTOMAC TELEPHONE COMPANY**  
OF BALTIMORE CITY