

### CHURCH NOTES AROUND KENT

#### CHRIST FOR ALL—ALL FOR CHRIST The Word of God

The Lord's Providence. Matthew 6: 31, 32, 33, 34. Therefore take no thought, saying, What shall we eat? or, What shall we drink? or, Where will we have our clothing? (For after all these things do the Gentiles seek:) for your heavenly Father knoweth that ye have need of all these things. 33. But seek ye first the kingdom of God, and his righteousness; and all these things shall be added unto you. 34. Take therefore no thought for the morrow: for the morrow shall take thought for the things of itself. Sufficient unto the day is the evil thereof.

**Prayer:**  
The birds, without barns or storehouse, are fed; From them let us learn to trust for our bread: His saints' want is fitting shall never be denied, So long as tis written, "The Lord will provide."

**MOWBRAY M. E. CHAPEL**  
Rev. Oliver Friedel, Pastor  
Sunday School 2.30 p. m., Mrs. Ida V. Kirby, superintendent.  
Remember Sunday is the regular missionary day.  
Epworth League 7.00 p. m.  
Preaching at 8 p. m., subject "The Divinity of Labor."  
Please note change in the hour of service for the fall and be on time.  
We wish to thank all who helped to make the annual fish fry a success.

#### BOND CHAPEL

Rev. Oliver Friedel, Pastor  
Sunday School 10.00 a. m., A. C. Loud, Superintendent.  
This is the regular missionary day in the Sunday School.  
Preaching at 11.00 a. m., subject, "The Divinity of Labor."  
Epworth League 7.45 p. m.  
On Monday evening the Athletic Association will hold its regular monthly meeting in the church. It is the desire of the president that all members be present and bring a new member.  
Prayer meeting Wednesday evening from 7.30 to 8.30 p. m. This meeting is held for the strengthening of our faith.  
On Thursday evening the Ladies' Aid will hold its regular monthly meeting in the church. Plan to be present.

The passing of years is like the coming of dawn—slow, silent, inevitable. The most eager can not hasten the quiet, irresistible movement, and the most reluctant can not forbid. Some gifts 'the years bring which we would fain decline—age, sorrow, disappointment. Some treasures they take which we would keep forever—youth, beauty, innocence. But there are more precious treasures which time can not remove—friendship, patience, faith and love.—Exchange.

**The Secret of Success**  
The talent of success is nothing more than doing what you can do well, and doing well whatever you do, without a thought of fame. If it comes at all, it will come because it is deserved, not because it is sought after; and, moreover, there will be no misgivings—no disappointment—no hasty, feverish, exhausting excitement.—Longfellow.

#### CHESTERTOWN M. E. CHURCH

Rev. J. Harry Wright, Pastor.  
10.00 a. m. Church School, with lesson theme "Prayer and Providence."  
11.00 a. m. Morning Worship and sacrament of the Lord's Supper in charge of the minister. The theme for the minister's meditation will be, "Promises of God." You are cordially invited to worship with this congregation at this service.  
7.00 p. m. evening worship. This is the last of the series of twilight meetings for the season. The DeWorth League will co-operate in the planning and conducting of this service.  
Wednesday evening, 7.30, Prayer and testimony meeting, in charge of the minister. The study of the religious ideas in great hymns of the church will be continued. Come out and share your favorite hymn with us.  
Friday evening, 8.00, Epworth and social meeting of the business League at the church.

#### CHRIST M. P. CHURCH

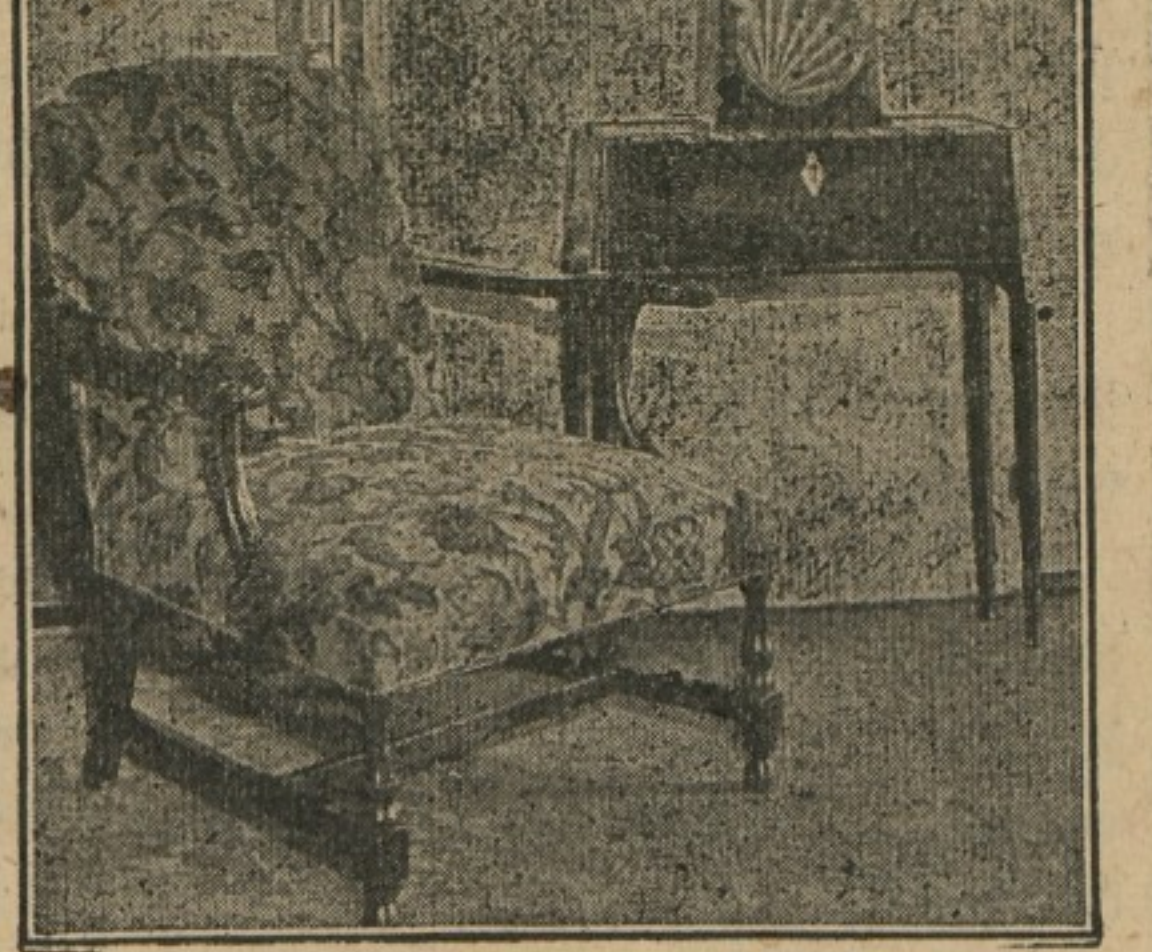
Rev. E. A. Sexsmith, D. D., Minister.  
Why should I go to church? Answer No. 2. I should go to church because of what I can give to it and do through it as well as because of what I may get out of it. The church is not a dormitory for sleepers, it is an institution of workers. You are invited to our services next Sunday which are as follows:  
10.00 a. m. Sunday School. Subject "Erza's Return to Jerusalem."  
11.00 a. m. Morning Worship. Address by the pastor and the monthly communion service.  
6.45 p. m. Senior Christian Endeavor. Subject, "Loyalty, Being Loyal to Our Work."  
7.30 p. m. Evening Worship. Sermon by the pastor.  
Wednesday 7.30 p. m. Prayer Service.  
Friday 7.30 p. m. Teacher Training Class.

#### Poor Man's Orchid

Increasing popularity has won for the gladiolus many titles, among which, says Nature Magazine, "the universal flower" and "the poor man's orchid" are commonest. Societies are formed around it.

**Best Fish**  
The cod is the most useful fish. Its food value is high; it yields valuable cod-liver oil and isinglass. Cods' heads, too, when mixed with certain plants and fed to cows, greatly increase the milk yield.

**ELECTRIC RADIOLA 33 \$90.00**  
Complete installed in your own home.



Phone 110, for free DEMONSTRATION  
**ShoreRadio Service**  
Chestertown, Md.

### The Place To Trade BRAMBLES STORE, Fairlee.

<b>Ladies Wear</b> In Rayon, Silk and Cotton Blouses, Panel Suits and Hosiery.	<b>Mens Big Yank</b> Union suits with reinforced elastic back. each \$1.85
<b>Ladies and Childrens Hats</b> At Close-out Prices	<b>Save Money on Overalls</b> by buying the best. Buy Ironalls price \$1.75.
<b>Simmons Heavy</b> Enamel Beds Price \$7.50	<b>The Modern Disinfecting</b> Whitewash for chicken houses. Carbola 75c package.
<b>All New Patterns In</b> Armstrong Linoleum Rugs Accolac Finish. 9x12 \$9.75 each	<b>Good Heavy Spades</b> for setting tomatoes 75c each.
<b>A Full Line of Du Pont</b> Paints for inside and out- side painting. Get our prices before buying.	<b>Grocery Specials</b> Kennys high grade coffee 40lb 4 lb. whole grain rice .25 P. & G. white naptha soap box 4.15 Best in the world flour .98lb 4.00

### T. H. M. Bramble FAIRLEE, MD.

KENT NEWS \$1.50 A YEAR IN ADVANCE

#### Due to the Prevailing High Money Market

It was necessary that the last issue of Federal Land Bank bonds should bear a higher rate of interest than issues immediately preceding.  
Therefore the FEDERAL LAND BANK hereby gives notice that on and after May 1, and until further notice, all loans made by the Kent and Queen Anne's National Farm Loan Association shall bear interest at the rate of 5 1/4 per cent per annum instead of 5 per cent as heretofore.

Come in and let me explain the provisions of a FEDERAL FARM LOAN TO YOU.

**THOS. D. BOWERS, Sec.-Treas.**  
CHESTERTOWN, MARYLAND  
Residence Phone 125; Office Phones 634.

KENT NEWS BEST ADVERTISING MEDIUM ON THE SHORE

### Digests Easily SCOTT'S EMULSION

#### A. PARIS DEPT. STORE Big Clearance Sale

All our goods we must turn into cash at any price. Come to buy now your needs in Summer and Fall Goods and save a lot of money.  
Also for sale a First-Class Guernsey Cow 4 1/2 years old with her fine bull calf.  
Bring us your chickens and eggs. Will pay you cash at the market price.

A. PARIS DEPT. STORE  
Sandy Bottom, Md.



One Johnny  
For Coal 149  
**ORDER NOW!**  
ORDER new that is the burden of our song. Buy your winter share of heat while the price will allow you to save money. It can't go lower—it can rise as it gets more difficult to secure.

**C. W. KIBLER SONS**  
Chestertown Md

#### Farm Owners and Tenants

Will all those who own or tenant lands along the proposed slag roads obligingly cooperate with us by coming up fence rows and mowing the roadsides.  
By so doing this will insure an earlier completion and a better job.  
G. B. TAYLOR,  
County Road Engineer.

# THE NEW Dictator Six

## CHAMPION PERFORMANCE, STYLE, COMFORT

... the lowest priced Studebaker closed car in history

### \$995 at the factory

THE world expects a Studebaker to deliver championship behavior, since Studebaker holds more official records for speed and endurance than all other American manufacturers combined. And the New Dictator delivers this performance smartly, eagerly, brilliantly.

The New Dictator Six, companion car to the recently introduced Dictator Eight, is larger, lower, finer than ever. Its low price is possible only because of Studebaker's tremendous volume and unique One-Plant manufacturing advantage.

Come, drive the New Dictator! Fine-car quality is patent in its line style, in the way it rides and handles, in its flash and go.

- 115-inch wheelbase.
- Powerful engine of 221 cubic inch piston displacement. Abundant power, marvelous flexibility and smoothness.
- Lanchester vibration dampener.
- Oil filter, gasoline filter and crankcase ventilating system.
- Full pressure lubrication to main, connecting rod and camshaft bearings.
- Fuel pump insures constant, adequate flow of gasoline.
- Thermostatically controlled cooling system.
- Waterproof ignition system.
- Double-drop frame of new, compound flange-design.
- Hydraulic shock absorbers, front and rear.
- Amplified action 4-wheel brakes which stop in half the distance accepted standard.

- Genuine mohair upholstery.
- Full-vision, full-ventilated bodies, of steel over hardwood foundation—the accepted fine car coachcraft.
- One-piece steel core safety steering wheel.
- Fully adjustable steering column and front seat.
- Tarnish-proof chromium plating.
- Tilt-ray headlights controlled by switch on steering wheel.
- Coincidental lock to ignition and steering assures Dictator owners lowest theft insurance rates.

The Dictator may be driven 40 miles per hour the day it is delivered—the result of advanced engineering, precision workmanship and careful inspection.

**Straight Eight Power**  
at a new low price  
**Dictator Eight \$1185**

DICTATOR MODELS AND PRICES	
Club Sedan, for 5	\$1035 \$1195
Sedan, for 5	1095 1235
Regal Sedan, for 5	1195 1335
<i>(6 wire wheels and trunk rack)</i>	
Tourer	1095 1235
Coupe, for 4	1045 1235
Coupe, for 2	995 1185

Prices at the factory

New Prices effective August 5th on more than forty smart new Sedans, Broughams, Coupes, Convertible Cabriolets, Roadsters, Limousines, Tourers  
Now you can buy

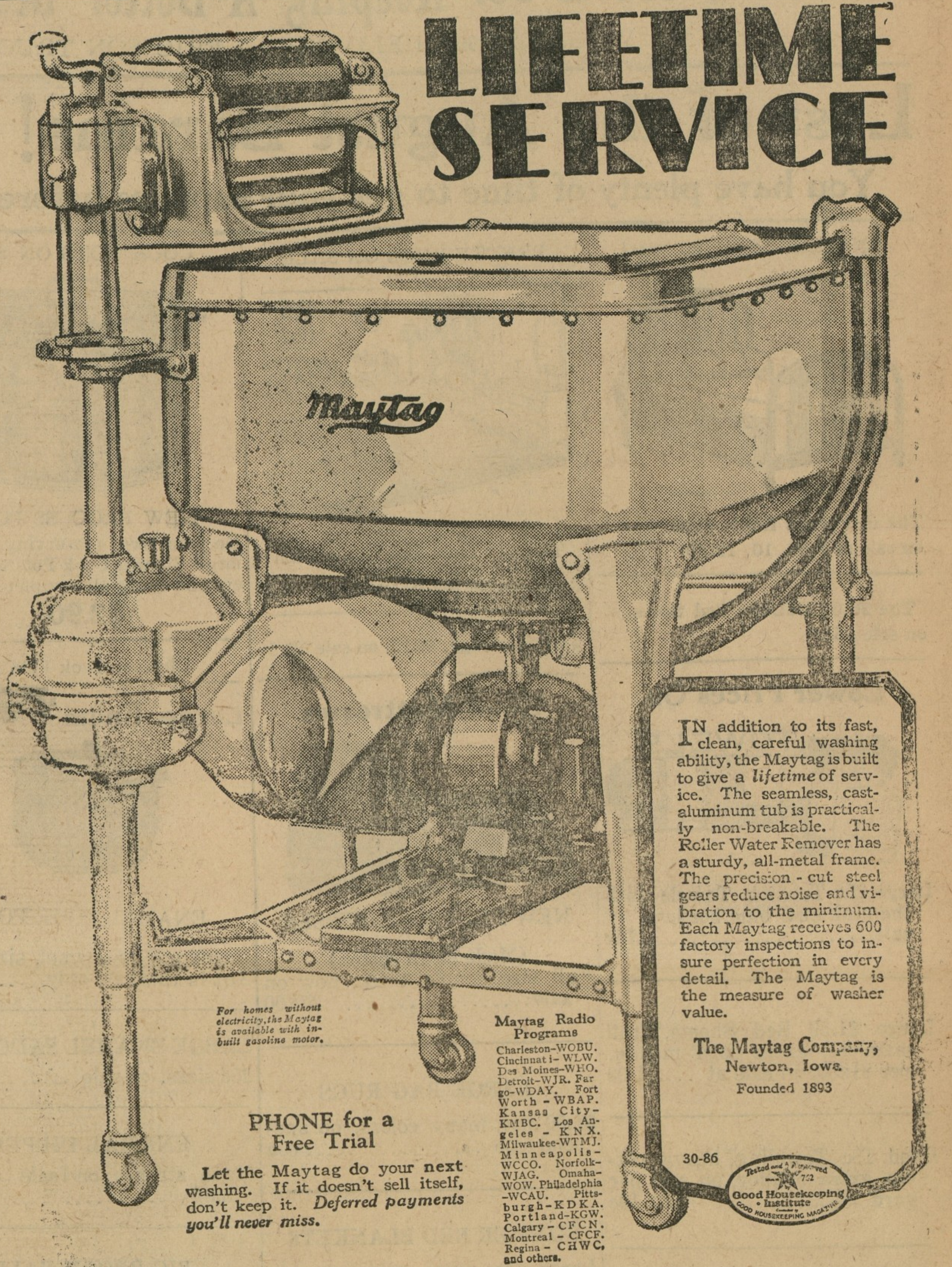
President Eight Sedan for 5 (125 in. wheelbase)	\$1995
Commander Eight Sedan (four door—120 in. wheelbase)	1735
Commander Six sedan (four door—120 in. wheelbase)	1475
Dictator Eight Sedan (four door—115 in. wheelbase)	1235
Dictator Six Sedan (four door—115 in. wheelbase)	1095

Prices at the factory

Shop around—compare performance, comfort, beauty—nowhere else will you find such VALUE as in these sparkling new Studebakers!

TUNE IN  
"STUDEBAKER CHAMPIONS"  
Sunday Evening 9.15 to 9.45  
Eastern Standard Time  
Station WRC WEAF and  
NBC Network

## CHURCH HILL MOTOR CO. HARRY D. MASSEY, Prop. CHURCH HILL, MD.



### LIFETIME SERVICE

In addition to its fast, clean, careful washing ability, the Maytag is built to give a lifetime of service. The seamless, cast-aluminum tub is practically non-breakable. The Roller Water Renewer has a sturdy, all-metal frame. The precision-cut steel gears reduce noise and vibration to the minimum. Each Maytag receives 600 factory inspections to insure perfection in every detail. The Maytag is the measure of washer value.

The Maytag Company,  
Newton, Iowa  
Founded 1893

PHONE for a Free Trial  
Let the Maytag do your next washing. If it doesn't sell itself, don't keep it. Deferred payments you'll never miss.

GEO. W. BALDWIN, Chestertown, Md.

### Maytag Aluminum Washer