

### The New Deere No. 9 Planter



This is the corn planter which has demonstrated to thousands of farmers that it is practicable to obtain a perfect stand of growing corn. Our unrivaled edge selection drop, used only on Deere Planters, has become immensely popular. More corn per acre can be grown when the New Deere Planter is used, because it puts the required number of kernels in every hill. And a full stand is the first and most important step in securing the maximum yield of corn. If you are interested, write for our book containing full particulars. It contains information which will enable you to improve the quality and increase your yield of corn. Our handsome and useful pocket companion free.

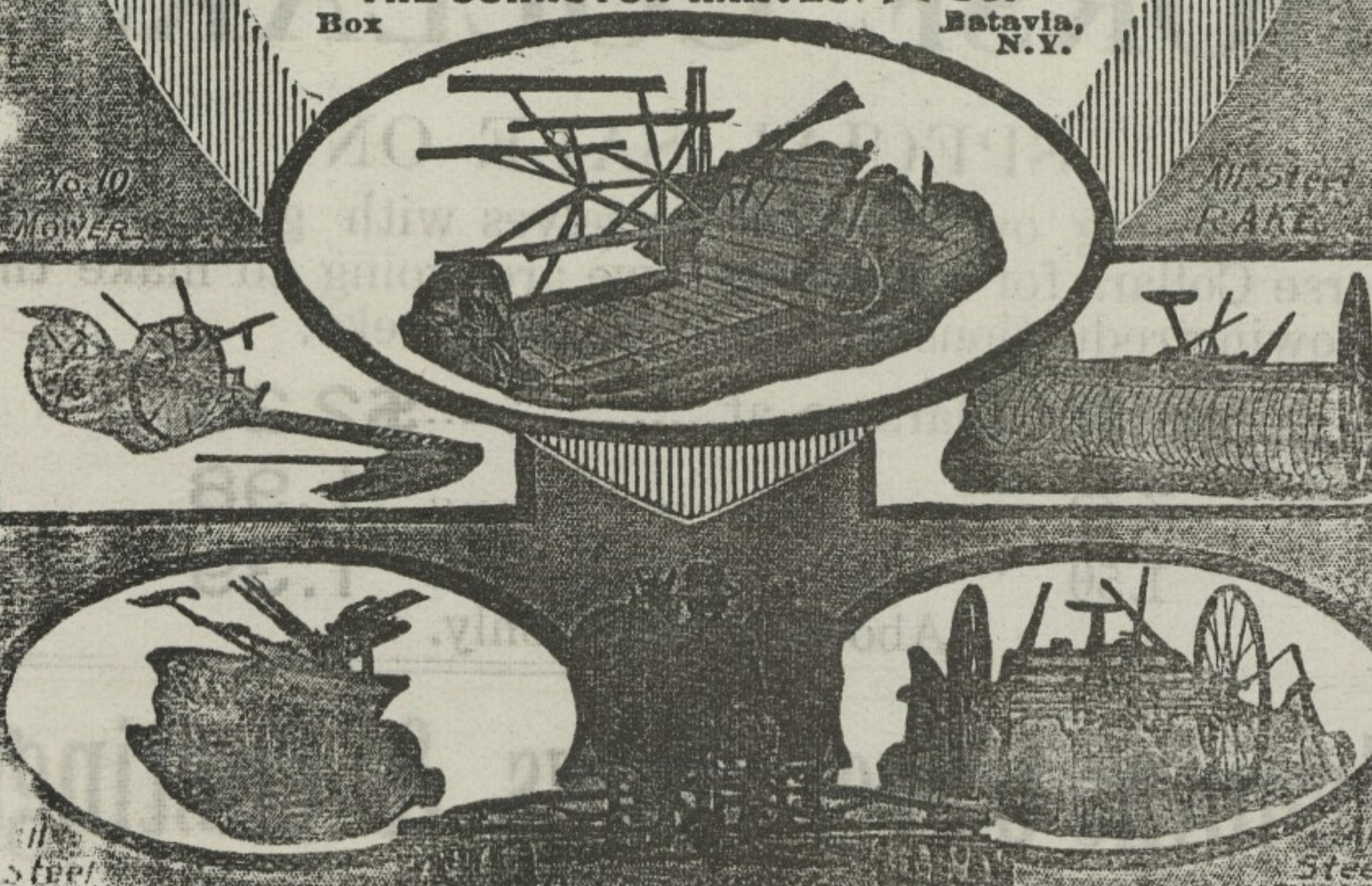
**A. S. TURNER, Agent,**  
Worton, Md.

## Johnston FARM TOOLS

NOT IN THE TRUST

When you put your money into a Johnston farm implement you can rest assured you will get the very best value you ever obtained in farm machinery. The reason why they stand so high with the thousands of farmers in this and foreign countries is because they give that real, genuine satisfaction in the field which every buyer of farm tools hopes to get. They fulfill the highest expectations; are so positively dependable, so thoroughly practical and do the work so much better, quicker and easier that when compared by actual service with others, their superiority is at once apparent. Here we show some of them. We cannot tell you all their special strong features here; their exclusive advantages—the points that make them superior to others, or show you by illustrations just why they do their work better, quicker and easier, just why they last longer, why the breakage is so rare, why they are the cheapest; but our 1908 Catalog gives full description of our full line. You should not buy a single tool until you read it. It will help you to avoid making a mistake and post you on latest improvements. A postal brings it. Write today.

**THE JOHNSTON HARVESTING CO.**  
Batavia, N.Y.



**A. S. TURNER, Agent,** Worton, Md.

### SPRING HAS COME

—AND—

Everyone is anxious to have a first-class team. One of the best guarantees of an even gaited horse is in the

## SHOEING

and one of the most necessary things about a good Carriage is the

## WHEELWRIGHTING

SAMUEL HICKS is the man who can DO BOTH JOBS to the satisfaction of a large patronage.

Bring your Horses here.

## SAMUEL HICKS,

The Horse Shoer and Wheelwright.

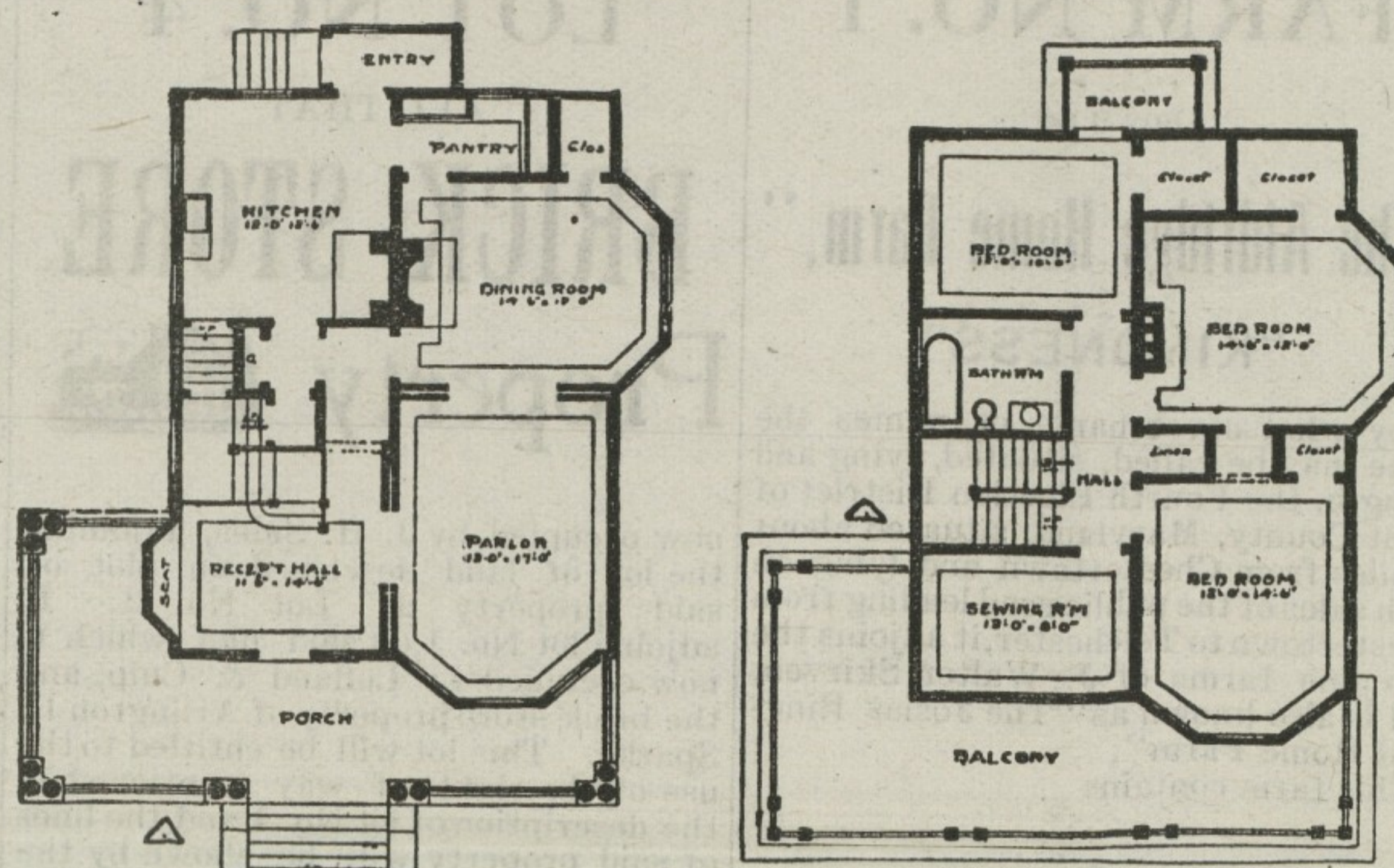
### A Stately Colonial.

Interior Pleasing and Well Laid Out—Estimated Cost, About \$5,000.

Copyright, 1909, by P. T. MacLagan, Newark, N. J.



PERSPECTIVE VIEW—FROM A PHOTOGRAPH.



FIRST FLOOR PLAN.

SECOND FLOOR PLAN.

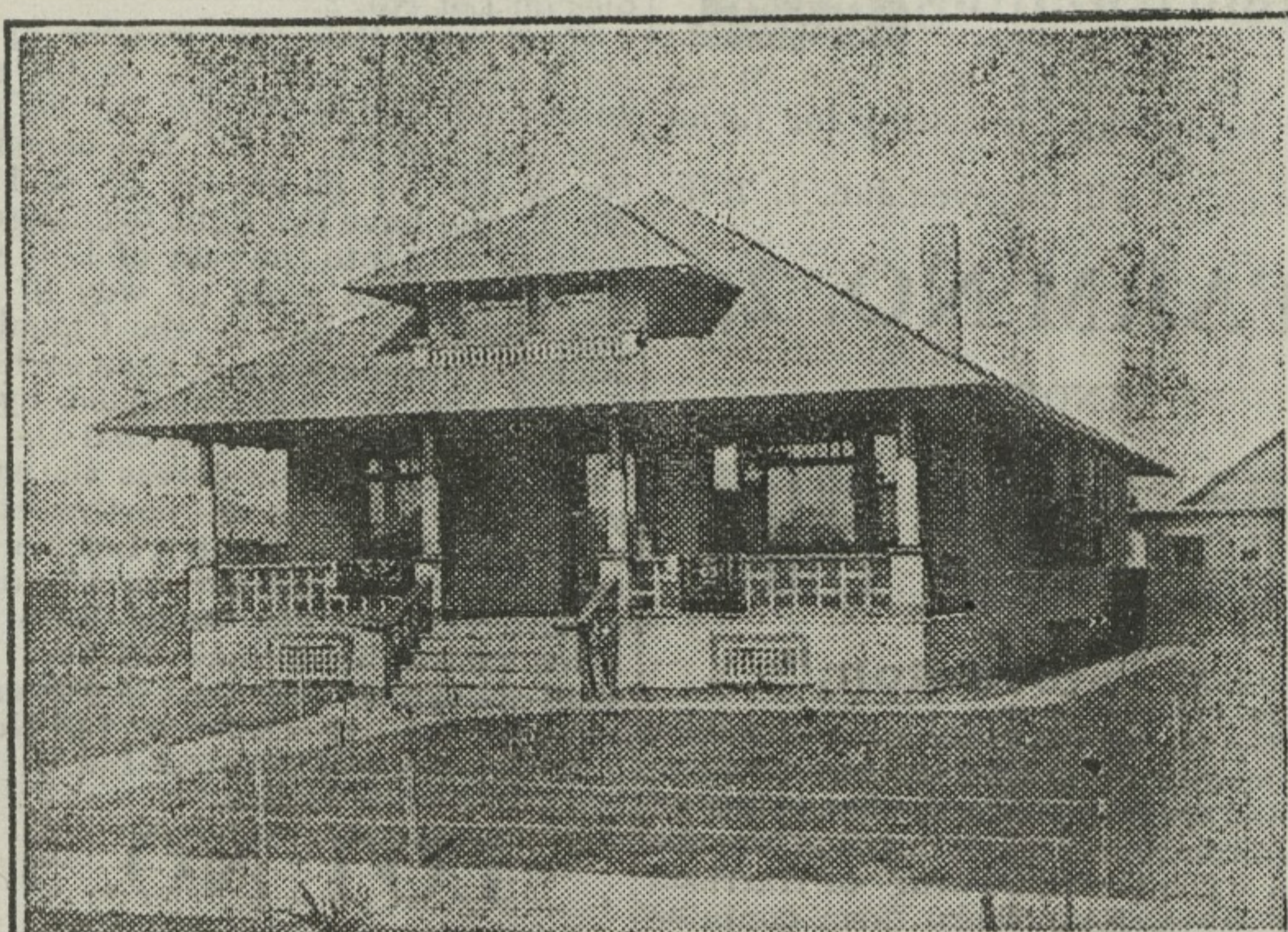
This design makes an exceptionally fine colonial home, rich and effective in appearance. The interior arrangement is well laid out, both for comfort as well as pleasing effect. There is a grandeur about this house not always found in more costly houses. Note the reception hall with its nook, seat and fine staircase. First floor is trimmed in local hard wood and finished natural, except the parlor, which is enameled. Second floor trimmed in soft wood and finished natural. Two rooms finished in attic. First story ten feet high; second nine feet high; cellar seven feet high, with laundry under kitchen. The stairs to the laundry are under the main stairs, but lead from the lobby between hall and kitchen. Full modern plumbing throughout. The house is heated with steam, and all walls and ceilings are plastered with three coats of plaster. Cost about \$5,000. Size 28 by 36 and ten foot porch.

P. T. MAC LAGAN, Architect.

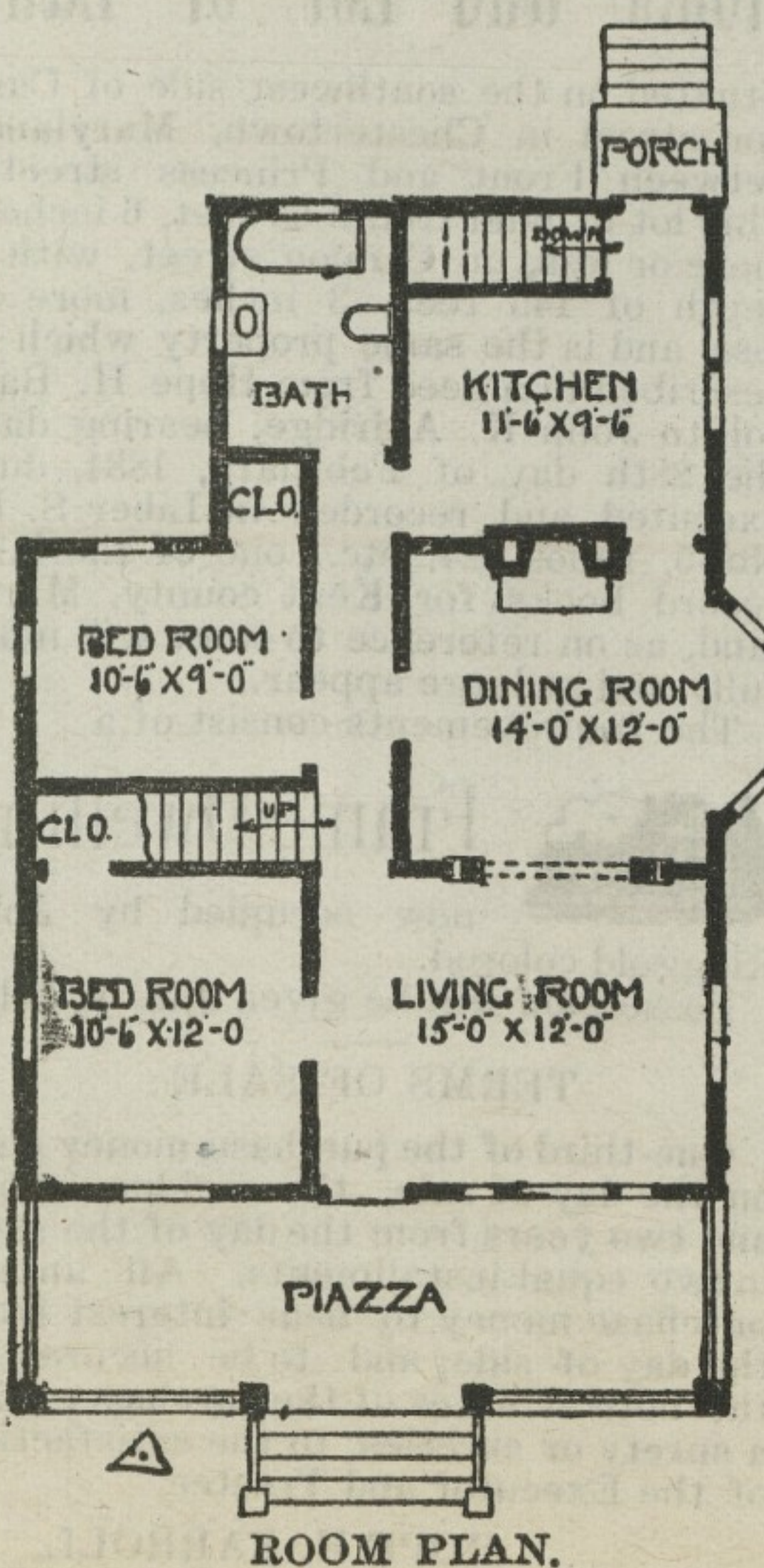
### A Homelike Cottage.

Arranged For One or Two Stories and Basement.  
Estimated Cost, \$1,700.

Copyright, 1909, by Glenn L. Saxton, Minneapolis, Minn.



PERSPECTIVE VIEW—FROM A PHOTOGRAPH.



ROOM PLAN.

In this design I present something which is in great favor on the coast, and, though only the first floor is finished, there is ample room on the second floor for a couple of small rooms. Because of its simplicity it should also prove to be an economical house to build. The rooms are all of generous size. The size over all is 27 feet by 38 feet. The basement is seven feet high and the first floor nine feet. Either a large or small basement can be had, at the option of the builder. The exterior is sided, though either shingles or plaster would look well. Cost to build, exclusive of heating and plumbing, \$1,700.

GLENN L. SAXTON, Architect.

THE LADIES' STORE

CHESTERTOWN, MD.

## JEFFERSON.

OPPOSITE STAM'S HALL.

### YOUR EASTER HAT COSTUME and ACCESSORIES

ARE HERE.

Our display of fashionable apparel for Easter is unrivalled. This is the store that gets the new things first, and always gets them right. The true New York styles are here, call and see them.

### Trunks, Suit Cases and Bags.

Every trunk is made for satisfactory service and marked at a lower price than you will find elsewhere for similar grades. A very large assortment of suit cases and bags at similar low prices.

### Black Petticoats for \$1.10

Which Brings You Extraordinary Values.

This is the best values that we have ever been able to offer our trade in petticoats. They were made to sell for \$1.50, but we took what the factory had and here they are at \$1.10. Some have embroidered flounces while others are ruffled.

### The Tailored Suit at Small Cost.

Is packed as full of worth here as careful planning and close touch with all markets can achieve. First and foremost we see that materials and tailorings are of the kind to insure satisfactory wear. We test materials ourselves when we have reason to doubt them. Pretty trimming touches are added as cost permits. But you will never find in our suits inferior materials concealed by flashy trimmings. You are sure of an honest equivalent for your money in wear, style and tailoring, no matter how little you pay. Hints:

At \$15.00—Of serge in brown semi-fitted coats, single breasted jackets. Gored skirts.

At \$18.00—Of serge in blue smoke and fancy striped effects with semi-fitted jackets, cutaway corners. Gored Skirt.

At \$16.00—Of Shadow Striped Panama semi-fitted single-breasted jackets with cutaway corners, satin lined. Gored skirts.

### DRESS GOODS.

They are here in more abundance this season than ever before in all the new shades—blue, green, smoke, brown, grey, tan and black, both in plain colors and shadow stripes.

### Spring Shoes and Oxfords.

The newest and best footwear, all leathers, all styles, all toe shapes, all style heels. Everything that is correct and up-to-date. Blucher, lace and button shoes. Lace and Blucher Oxfords and heel strap Pumps.

## HARRY F. JEFFERSON,

THE LADIES' STORE,

Opposite Stam's Hall.

Chestertown Md