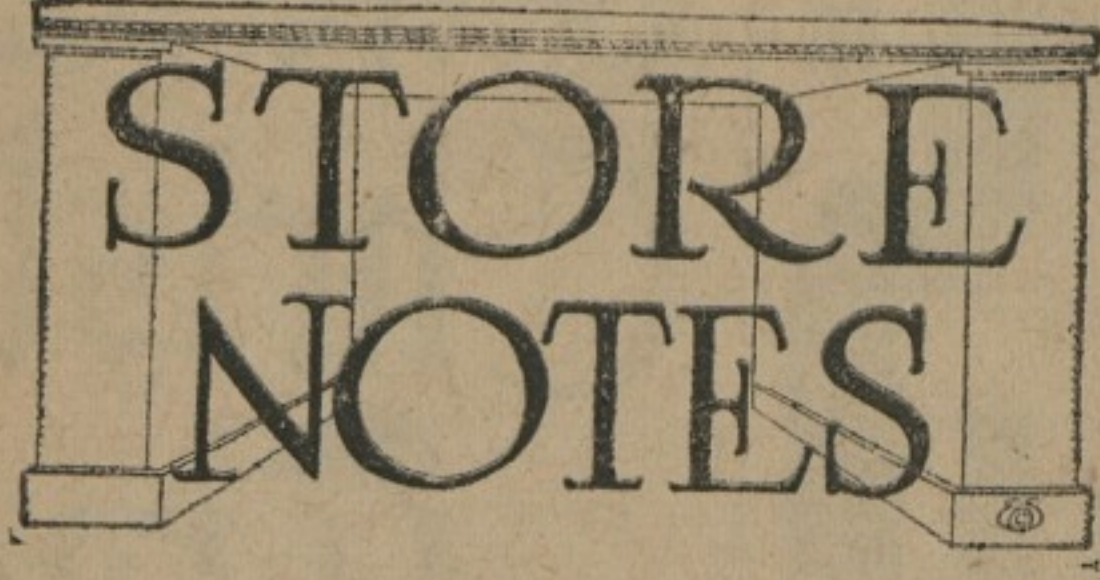


H. F. JEFFERSON & BRO.,
THE LADIES' STORE,
Opposite Stam's Hall, CHESTERTOWN, MD.



The Straight Way

Do you know the difference between a STRAIGHT LINE way and a ROUND-ABOUT way? The straight line way is absolutely the quickest way, and because it is the quickest way it is the best way.

If you want anything you always go straight after it, don't you? All of us do, it is but natural.

Do you go after your general wants in a straight line?

Do you go after your merchandise, your wearing apparel or your general shopping wants in a straight line or do you get then in a round about method?

If you have been going about it in an indirect way, it's time you traded at this store.

Here you will find THE STRAIGHT LINE WAY.

We seek to cut out round about methods for you. Our efforts are used to assist you secure what you wish in the shortest, quickest and, therefore, in the best way. That's the straight line.

We give you straight information about merchandise and styles. We give you courteous service and the best values.

By using these methods, and getting the straight line idea in shopping, you cut the money-wasting time wasting round-about methods of reaching the best results.

(Signed)

H. F. Jefferson & Bro.

The Newest Winter Coats and Suits are Here

We have an admirable collection of the new Winter Coats and Suits for women, in every fashionable style. These Coats and Suits are splendidly tailored and correctly proportioned; their perfect fit is a matter of course and not of guesswork. They come from the well-known firm of Strawbridge & Clothier, of Philadelphia.

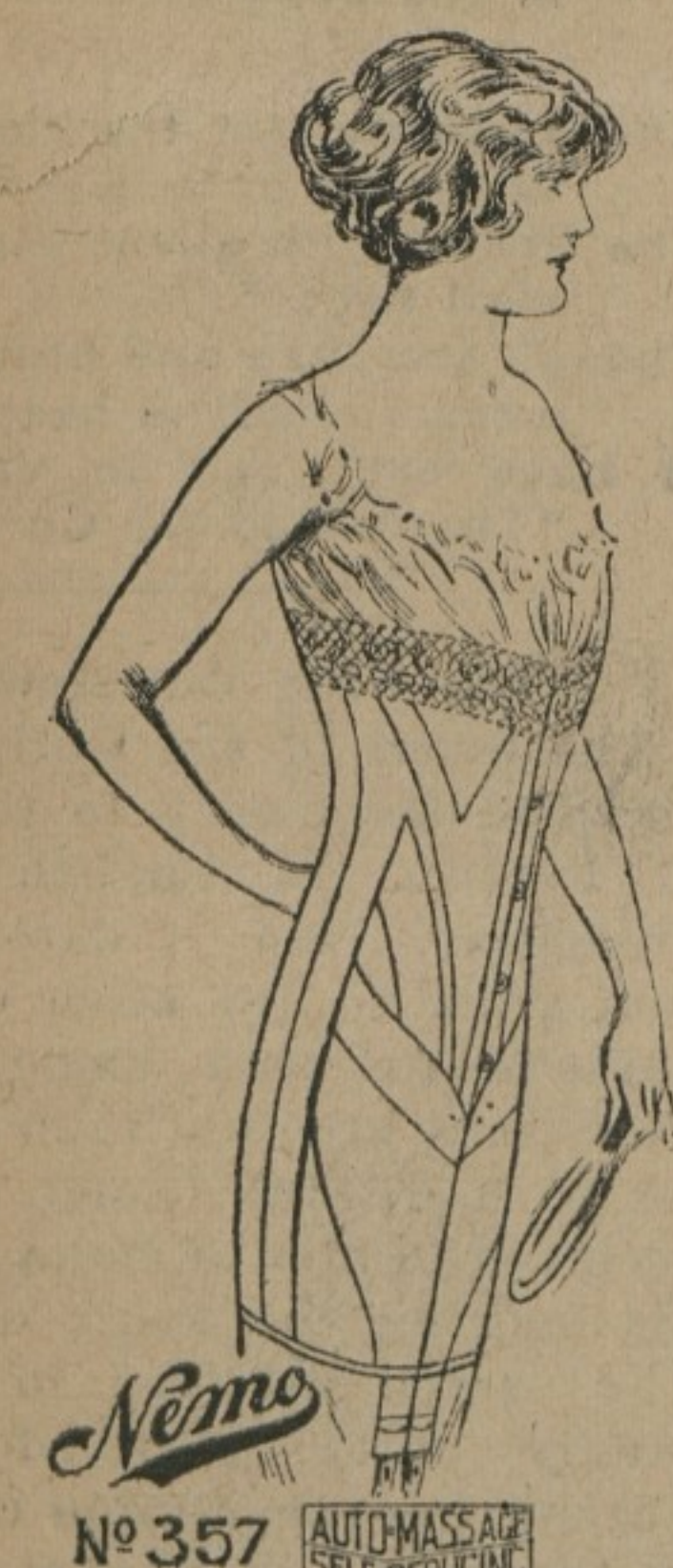
The newest fabrics are represented in the showing--warm, cosy materials that are not uncomfortably heavy.

It is our opinion that these Coats and Suits measure up to the highest ideals. Won't you come to see them to-day?



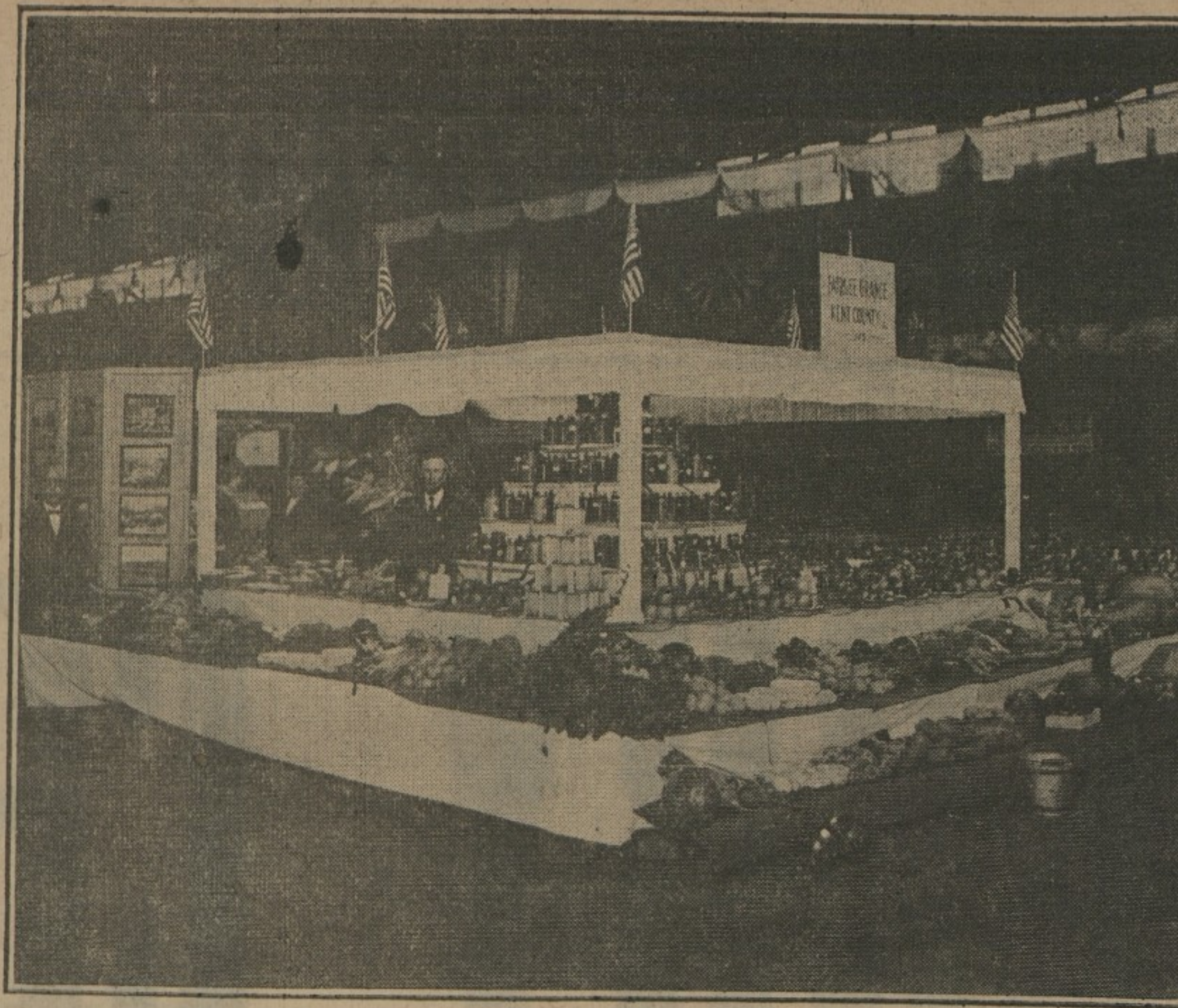
The Corsets Sold at Jefferson's

are the ultimate of comfort and efficiency in corset-making. Hygienic in construction, and made in the styles that will shape the figure into the fashionable lines. A model for YOUR figure is here. We shall be pleased to fit it to you.



H. F. JEFFERSON & BRO.

The Ladies' Store,
Chestertown, Maryland.



WINS THIRDPRIZE

Kent County Wins Third Prize at the Maryland Horticultural Show.

The Eastern Shore covered itself with glory at the Fifth Regiment Armory Maryland Week, three of the four possible prizes going to it. Talbot county won first, Dorchester second and Kent third. To Fairlee Grange belongs the honor of bringing this prize to Kent. The advantage of the munificent offer of \$50 to any organization competing at the show, made by his honor, Judge James Alfred Pearce, Fairlee Grange entered the contest and was a very strong contestant for the prizes. In fact, her failure to win first prize was due more to its being her first attempt and a consequent ignorance of the rulings of the judges, than to any other cause.

In number of exhibits it ranked first, having over 500, 113 of which were canned fruit and vegetables, besides jellies, catsups, pickles, etc. The other exhibits comprised almost everything produced on a well regulated farm. In the number of premiums received it ranked first, having received 118 first, second and third premiums. In quality of exhibits it ranked second, getting a mark of 50 out of a possible 60, being beaten by Cordova only one point. In variety it ranked first, but got second place on account of the failure of exhibitors to properly name the different varieties of fruits, vegetables, etc. Even then it got out of a possible 100 in appearance of display it received third place, and in percentage of members exhibiting it was fourth, on account of its having nearly four times as many members as any other club exhibiting. The booth was the Mecca for all Kent counties and also for those who had friends in Kent, and those in charge of the booth were constantly being distributed with inquiries concerning the exhibits and also of their friends in Kent. The Japanese eel squash in particular excited great curiosity, seeds from it being distributed as far south as Texas and as far west as California. Many inquiries were made to purchase canned fruit and vegetables, apples, honey, potatoes, and in fact everything. In conclusion Kent county has again taken her place at the front, and we take off our hats to Judge James Alfred Pearce, whose generosity made the exhibit possible.

The following article is from the "Garner," edited by Mrs. T. E. W. Crew: "The week from November 16th to the 21st was a famous one in the career of Fairlee Grange No. 249. With hearts full of enthusiasm a jolly party of two Fairlee Grangers took the boat at Tolchester Bay, Md. for Baltimore. They were branching out on a work very new to them but nothing

daunted, they were determined to do well whatever their hands were put to. Arriving at the Fifth Armory, they found the place full of workers and soon they too were busy constructing the booth and unpacking the canned fruit and vegetables, grapes, pears and hay. Each one of the party became an adept in the study of "general effect" and "perfect harmony" and all worked with a will for the pride and glory of Fairlee Grange.

It was soon found that there was not room enough to show the numerous products had and early Tuesday morning more lumber was purchased and extra shelves were made to better display our exhibits. When 4 o'clock Tuesday afternoon came and the books had to be handed in the Secretary there was an exhausted crowd around Fairlee Grange booth but it was also a very contented one. 172 cans of fruits and vegetables besides wines, jellies and catsups graced the pyramid in the center.

Brother Grace Rhinehart's Japanese eel squashes were the source of much interest and comment and the charming manner in which the Worthy Overseer for club exhibited (explaining the excellent quality of these squashes) excited our great admiration. It was no uncommon sight to see the crowd flow deep taking in the wisdom from our Worthy Brother relating to this now famous vegetable. Samples of the precious seeds of which, in lots of never more than two were sent as far South as Texas, and as far West as California. The Worthy Master was pleased to extend the courtesies of Kent county to all who visited the booth, among whom were about 20 Kent counties and others high in ecclesiastic and political life--among the latter being Rev. Peregrine Wroth and ex-Gov. Wardell. The telegram sent to Judge Pearce inviting him to visit our exhibit brought an immediate answer expressing his inability to do so because of sickness. On Monday and seven ribbons were received for 1st, 2nd and 3rd prizes and when it was officially announced that we had received 3rd prize of \$75.00 for club exhibit we were very pleased would be expressed in mildly.

"GOOD" Furniture and Rugs at Always Moderate Prices

Furniture to be really "GOOD" should be graceful in design--strongly made--carefully finished. It should give complete satisfaction every minute through long years of use.

For over sixty years, Pollack's has supplied Maryland homes with Furniture of distinctive quality at prices that are always consistently moderate.

Next time you're in Baltimore, don't pass by because we're a "big store"--come in and we'll prove that a big store and a reputation for selling good Furniture, Rugs and Linoleums doesn't mean "big prices."

MR. C. S. HERRING, of the old firm of O. Herring Sons & Co., which retired from business, is now a member of our staff of salesmen, and would be pleased to see the old patrons of O. Herring Sons & Co. at

POLLACK'S
ISAAC DAVIDSON
WM. B. FALLON Proprietors.
HOWARD AND SARATOGA STREETS, BALTIMORE, MD.

Md., Del. & Va. Ry. Co.

CHESTER RIVER LINE.

SCHEDULE
In effect Monday, Oct. 29th, 1914.
Steamer will leave Baltimore, Pier 9, Light St. Wharf, Tuesday, Saturday, 11 A. M., weather and tide permitting, for the following points: Rock Hall, Queenstown, Poles, "Spaniards" Point, Cliffs, Indiantown, Ashland, Quaker Neck, "Booker", "Riverside", "Rolph's", "Piney Grove, arrive Chestertown about 5:30 P. M.
*Stop on Signal.
Returning, steamer leaves Chestertown for Baltimore, Monday, Wednesday and Friday, 8:00 A. M., weather permitting, stopping at the above landings, arriving in Baltimore about 2:00 P. M.
Steamer will leave Baltimore, Pier 9, Light St. Wharf, Tuesday, Saturday, 11 A. M., weather and tide permitting, for the following points: "Spaniards" Point, Cliffs, Indiantown, "Ashland", "Quaker Neck", "Booker's", "Riverside", "Rolph's", "Piney Grove, Chestertown, "Deep Water", "Crumpton."
*Stop on Signal.
Returning, steamer will leave Crumpton, weather and tide permitting, for Baltimore, Thursday at 2:15 P. M. Chestertown at 4:00 P. M., stopping at the above landings.
This time-table shows the times at which steamers may be expected to arrive at and depart from the several wharves, but their arrivals or departures at the times stated is not guaranteed, nor does the Company assume any responsibility for any delay or any consequences arising therefrom.

WILLARD THOMSON, T. MURDOCH, General Managers. Geo. Pat. Agt. W. H. BROWN, Agent, Baltimore.

Tolchester Company

FALL SCHEDULE
(WEATHER PERMITTING)
IN EFFECT NOVEMBER 1st, 1914.

SASSAFRAS RIVER LINE
MONDAYS AND WEDNESDAYS steamer will leave Fredericktown at 7 A. M., Betterton 8:15 A. M., Buck Neck 9:30 A. M., Worton Manor 9:30 A. M., Tolchester at 10:15 A. M.
TUESDAYS AND SATURDAYS steamer will leave Baltimore at 2:45 P. M. for all of the above landings, except Tolchester on Saturdays.
P. S. - Port Deposit Line Steamer also stops at Worton Manor on Thursday. When tides are low steamer will not stop at Buck Neck. Freight for Buck Neck will be landed Mondays and Wednesdays.

PORT DEPOSIT LINE

MONDAYS, WEDNESDAYS, THURSDAYS, FRIDAYS and FRIDAYS steamer will leave Fort Deposit at 7:00 P. M. for Tolchester, Betterton, Havre de Grace and Port Deposit. Stops at Worton Manor on Thursdays.
TUESDAYS, THURSDAYS, FRIDAYS and SATURDAYS steamer will leave Baltimore at 7:00 A. M., Havre de Grace 7:50 A. M., Betterton 8:45 A. M., Worton Manor (Friday) at 9:15 A. M., Tolchester at 10:15 A. M. Except Tolchester Saturdays.
TOLCHESTER SPECIAL--Saturdays, leave Tolchester at 5:00 A. M. and 4:30 P. M. Leave Baltimore at 7:00 A. M. and 5:20 P. M.
For further information, apply to agents at different wharves, or
TOLCHESTER COMPANY, Pier 16 Light St., Balt., Md.

THE HOLIDAY SPIRIT; A CHRISTMAS FANCY

DRIVEN from the heart of the people, Christmas Spirit left the great shops, fled from the market places and from every habit of man until he came to the quiet little sunlit path that runs through the deep wood.
"When he was yet afar off the most perfect Fir Tree in all the forest called gayly to the Great Oak at her side, "Christmas is coming!"
"Yes," answered the big oak, "but there is something wrong. See how he halts at the end of the path, stooping as if the load of the world's sorrow lay upon his shoulders. See how he comes now, with all the gladness gone from his step."
It was quite true, Christmas Spirit came toward the most perfect Fir Tree in the wood with lagging step, looking away through the forest with sad and troubled eyes.
"Why, what is the matter, Christmas?" called the Fir Tree.
"There was no answer. The forlorn figure sat down on a fallen log at the foot of the Fir Tree, but still there was no answer."
"Tell me about it all, Christmas," invited the Fir Tree in a voice vibrant with sympathy.
"I have been over the wide world. I have knocked at the door of every heart, and no one has opened to me. I am forgotten, and there is no one who loves me," he said.
"Every heart?" questioned the Fir Tree incredulously.
"No, but many, many hearts, and they are all alike," he compromised.
"I have been in the home of men and stood so close to them that I could lay a finger on their naked hearts, but they did not stir at my touch. They looked me squarely in the eyes, and these are the things they said to some woman in their homes: 'Don't break me.' 'I shall be months paying the bills you are making.' 'Christmas is a nuisance.' 'Confound this custom of giving presents anyway!'"
"These are the things they said while they looked into my eyes, and all the while my hands lay frozen against their hearts."
"I went and stood beside the women in many, many homes, and they looked through me as though I was not. One beautiful lady I think of now in particular. Oh, I wanted a place in her heart, and I knocked loud and long, but the door did not open so much as a crack for me to enter. She looked into my eyes and said: 'I wonder what Mrs. Brown paid for that bag she gave me last year. It looked like a cheap thing, and I shall not spend much money on her.' And again, 'It is awful to just not care a thing about it.'"
"No one loves me, and I cannot live without love, and so I shall die," sobbed Christmas Spirit to the Fir Tree.
"Christmas has come to be just a big exchange desk, where people give to those whom they know will give to them and grumble in the giving."
"Come closer," whispered the Fir Tree. "I have something to tell you."
"A woman came to the heart of the wood yesterday," said the Fir Tree, "and with her there was another woman."
"We must find the most perfect tree in all the forest, for none other will do," said the first woman.
"Yes," said the second woman, "for the child has no one to bring Christmas Spirit to her, no relatives, no friends, no one to care."
"They talked on and on until the story of the little crippled child for whom they were preparing a joyous Christmas came out. She was nothing to them, but she was alone and not like other children."
"A party of men were walking through the wood last Sunday," went on the Fir Tree, "for Christmas Spirit had stopped sobbing now and was listening intently."
"One of these men was telling the others about his aged father, who worked his fingers almost to the bone in years gone by to give his boy an education. Now he is very feeble, almost down the western slope, and his son--who will always be just a little boy to the old man--is going back to the little country village to spend a portion of the holidays with him and lift the veil of loneliness from his soul. He has planned some wonderful surprises for the lonely old man away back there in the country," ended the Fir Tree.
"Oh, has he?" exclaimed Christmas, no longer a forlorn little figure, but a happy, happy spirit.
"I am going away next week to be decked for the little crippled child," laughed the Fir Tree when Christmas Spirit stopped mid his mad dance of joy. "And I am going across the whole world, and I shall knock so earnestly at the heart of every human being that no one can fail to open wide the inner doors to Christmas Spirit," called the little figure of Christmas Joy as he danced away toward the edge of the wood and the cities and towns beyond--Julia Chandler Manz in Buffalo Express.

Profit and Loss at Christmas. Old Lady--What's the matter with the little boy? Elder Brother--Oh, he's cryin' cos I'm eatin' my Christmas cake an' won't give him any. Old Lady--Is his own cake finished, then? Elder Brother--Yes, an' he cried while I was eatin' that too.

Stewart Fruit Company

of Baltimore City, Md.,
118 & 120 E. Pratt street.
COMMISSION FRUIT AND PRODUCE SHIPPERS AND JOBBERS.
Highest market prices. Returns same day. Fruits, Berries, Melons, Vegetables, Poultry, Eggs, Live Stock, Furs, Hides, Country Produce, Oysters, Grain, Hay, Marsh Grass. Shippers are invited to visit our new store. Largest Fruit and Produce House in Baltimore. Reference--National Bank of Commerce, Broadway Street or Dunc.

THE Mutual Fire Insurance Co.

OF KENT COUNTY
SOLICITS YOUR INSURANCE!

ITS SAVING FUND FEATURE
unusual one in insurance companies.

During the past 8 years it has returned to its policy holders where policies have been cancelled... \$34,684.00
In the same period it has increased its reserve over... \$10,000.00
And its Total Assets... \$50,000.00

Applications for Insurance can be made to:
James Brice, Chestertown;
Chas. F. Jefferson, Chestertown;
E. S. Vallant & Son, Church Hill;
Ellsworth Bowers, Rock Hall;
C. E. Owens, Betterton;
Joseph Downey, Rock Hall;
J. A. Cassey, Rock Hall;
A. M. Kendall, Fairlee;
R. W. Moffatt, Millington;
F. H. Ruth, Glenn;
W. J. Sparks, Crumpton;
J. E. Thomas, Kent Island.
THOMAS W. ELIASON, President.
GEO. B. WESTCOTT, Secretary.

L. A. Pennington & Co.,
Kennedyville, Md.

DEALERS IN
All KINDS of LUMBER

Building Materials,

INCLUDING
Mill Work, Fencing Material, Siding, Flooring, Shingles, Roofing, Felt of all kinds, Galvanized Iron Roofing, Lime, Hair and Cement, Putty, Glass, Builders Hardware, Farm Gates always on hand.
Give us a call.

L. A. PENNINGTON & CO.
ROCHESTER RADIA TORS FOR SALE.

Put up Free when bought of us.

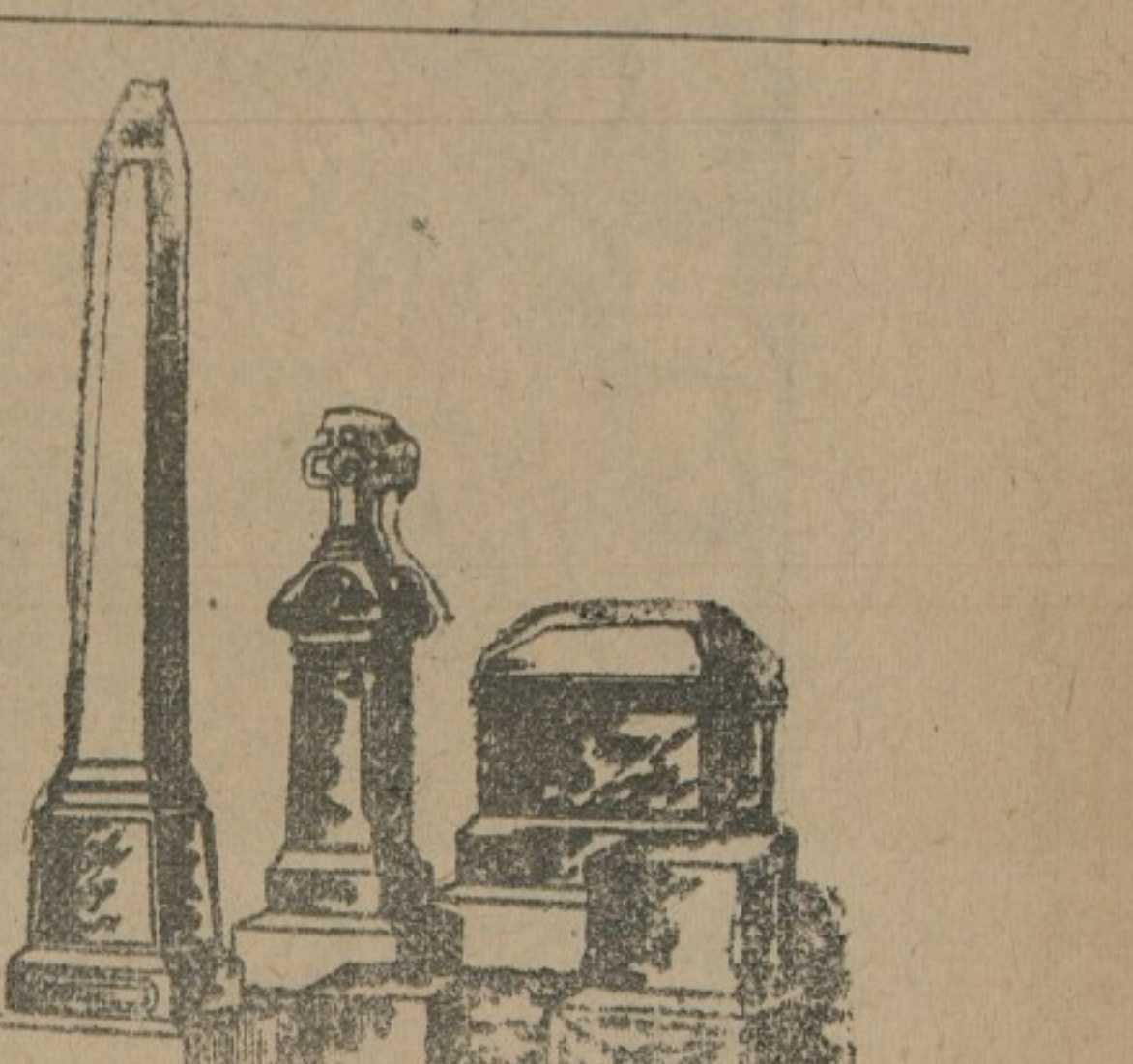
NOV IS THE TIME TO Paper and Paint Your House

Secure and get the BEST WORKMEN and the BEST MATERIAL. Don't waste money on bad material. Masury's Paints are the best on the market. We are the sole agents for this district, and are always ready to show you sample card and quotations.

We Will Paper Your Room for \$3 and upwards,

and guarantee satisfaction or no money.

IF YOU WANT YOUR PICTURES FRAMED
call and see our selections of Moulding before going elsewhere. They are the finest in town. We can be found at the old stand, opposite the M. Church.
Yours for Business,
W. L. FOWLER,



NOTICE

NOW IS THE TIME to place your order for cemetery work for Spring and Summer delivery. THE CHESTERTOWN MARBLE AND GRANITE WORKS is the PLACE to deal with. STEWART'S IRON FENCES, SETTS and Reservoir Flower Vases of all descriptions sold here.

J. W. KIRBY, Prop.,
CHESTERTOWN, MD.

J. K. B. EMORY WITH STEVENS BROTHERS

GRAIN, FRUIT AND PRODUCE COMMISSION MERCHANTS

1226 S. Charles St., Cor. Camden St., Baltimore, Maryland.

Grain Salesmen--E. Nelson Stevens, J. K. B. Emory, Fruit and Produce Salesmen--John L. Corson, A. B. Carey, Thomas Caldwell, C. H. Nelson Stevens.
We have the best possible facilities for handling shipments of Grain, Fruits and Produce. References--Merchants' Mechanics' National Bank of Baltimore and all Commercial Agencies.

OMEYS BROWN, R. L. HARPER

BROWN & HARPER,

Members of Chamber of Commerce, Grain, Fruit and Produce. COMMISSION MERCHANTS, No. 224 S. Charles St., Balto., Md.

J. E. HENDRICKSON & CO.,

LIVE STOCK COMMISSION MERCHANTS, 20th & RACE STS., PHILADELPHIA.

We handle Live Stock, and have all facilities for this line of trade. We solicit the patronage of shippers, and guarantee to make prompt returns. Give us a trial and be convinced! Jan. 2, 1915.

GENERAL COMMISSION MERCHANTS.

G. W. ROEDER & CO., 107 W. CAMDEN ST., BALTIMORE, MD.

Grain, Fruit, Potatoes, Onions, Vegetables, Live Stock, Poultry, Eggs, Hides, Wool, Furs, Fish, Tallow, Oysters, Fish, Crabs, &c. Reference FIRST NATIONAL BANK.