

# THE CITY STORE--THE HUB

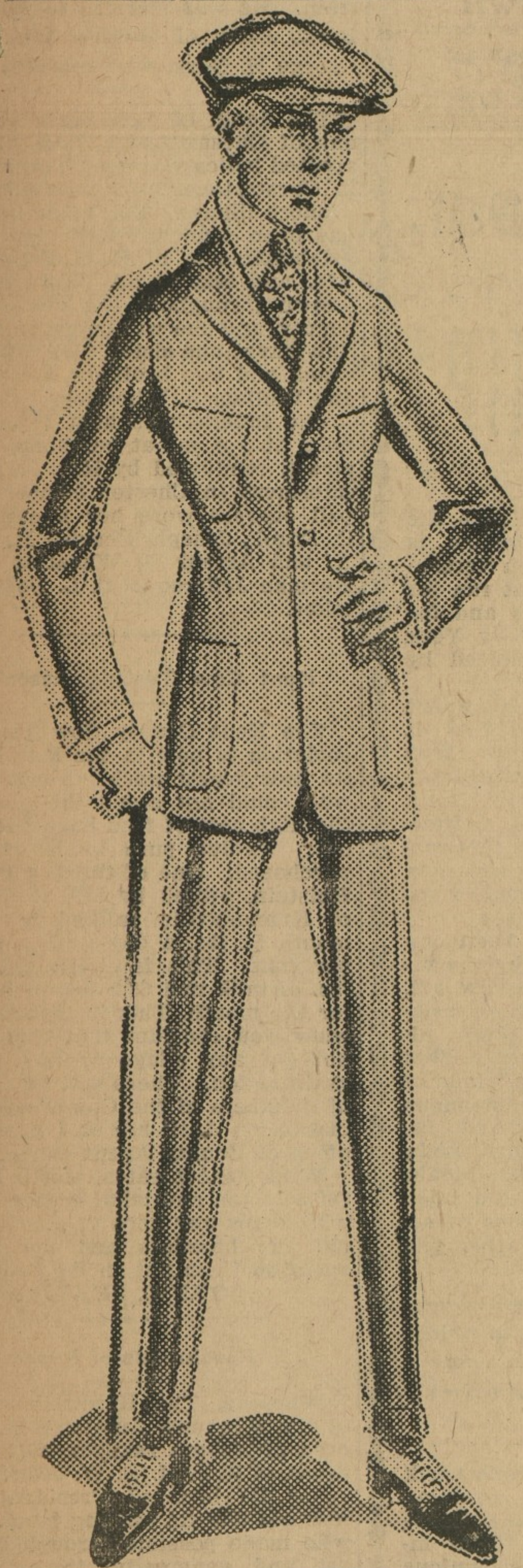
## New Spring Apparel Ready

For Men  
For Boys  
For Women  
For Girls

Surely you want to dress up for spring after being closed for so long a winter. This store offers to early buyers

Special Prices on Ladies Spring Coats

- Dresses
- Skirts
- Waists
- Shoes
- Millinery
- Corsets
- Dry Goods



## Men and Boys

who care for the very Newest in style clothes and the most durable for wear will find this store ready with the newest

## Men's and Boys' Spring

- Suits
- Hats
- Shirts
- Shoes
- Neckwear

### The Hub Store, Millington, Md.

Established 1877.

J. E. HENDRICKSON & CO. LIVE STOCK COMMISSION MERCHANTS, 8th & RACE STS., BALTIMORE, MD.

We handle live stock, and have all facilities for this line of trade. We solicit the patronage of shippers, and guarantee to make prompt returns. Give us a trial and be convinced. B. S. 1916.

Subscription to the Transcript 10 per annum.

## AUCTIONEER

THIS IS TO NOTIFY THE PUBLIC THAT ALL REMOVED TO CHESTERTOWN AND AM PREPARED TO BUY SALES IN KENT AND QUEEN ANNES COUNTIES ON REASONABLE TERMS.

JOHN T. JESTER, Auctioneer.

# Report of Auditing Committee OF KENT COUNTY, MD.

To The Honorable Board of County Commissioners for Kent County: Gentlemen--In compliance with an Act of the General Assembly of Maryland passed Jan. 1914, and in harmony with our appointment as Auditors by the Circuit Court for Kent County, we have examined the books, accounts and vouchers of the County Commissioners Office, the County Treasurer's Office, the School Board's Office and those concerning the Trustees of the Almshouse.

The assessment books of the County were compared with the tax books of the Treasurer, resulting in an increased basis of \$16,121.00 on the basis for Real and Personal Property \$10,250,252.00 instead of \$10,264,131.00. This Audit has reference chiefly to the Levy of 1916 when a rate of \$1.53 on the \$100.00 was declared for County purposes.

**EXHIBIT NO. 1**  
Summary of Assets, Real and Personal, and Amounts levied by County Commissioners

SOURCE OF REVENUE		
Real and Personal	\$10,264,131.00 at \$1.53	\$15,704.10
Shares of Corporations	\$1,275.43 at 1.53	1,951.20
Ordinary Business	\$4,115.89 at 1.53	6,296.31
Kent Mutual Fire Insurance Company	220.00 at 1.53	337.50
Bonds and Securities	579,916.84 at .30	173,975.05
Bank Shares	at 1.00 flat	10.37
Balance in Treasurer's Hands		1,823.72
<b>Total</b>		<b>\$182,825.72</b>

**EXHIBIT NO. 2**  
This is a statement in detail, showing how and for what purposes the Levy was appropriated.

PAID BY ORDERS	
Alms House	\$2,860.03
Bonds, Redemption	4,715.63
County Commissioners' Salary	2,500.00
Clerk to County Commissioners	900.00
County Commissioners Office Expense	893.93
Contract Printing	395.40
Health Officer and Jail Physician	897.12
Hospitals	1,000.00
Institutions	190.40
Janitor's Salary	150.00
Miscellaneous	845.00
Orphans Court, Salary	650.00
Orphans Court, Supplies	375.71
Pensions and Charities	1,314.50
Roads and Bridges, 1st Dist.	2,837.71
Roads and Bridges, 2nd Dist.	3,200.65
Roads and Bridges, 3rd Dist.	4,752.85
Roads and Bridges, 4th Dist.	307.25
Roads and Bridges, 5th Dist.	4,446.32
<b>Total</b>	<b>\$38,497.50</b>

**EXHIBIT NO. 3**  
COUNTY TREASURER'S OFFICE

Statement for the fiscal year ending June, 1917, showing all amounts charged to the Treasurer, the amount collected and the amount uncollected. Also the amount of his disbursements, and his balance on hand June 11th, 1917.

Amounts Collected and Received		
Balance June 2nd, 1916	\$31.75	
Bank Shares, \$28,670.62 at \$1.00 flat	2,867.06	
Bonds, Special, \$550,166.64 at .50	2,750.83	
From County Commissioners	1,740.50	
Interest Collected	535.41	
Kent Bldg. & Loan Mutual	7.96	
Fire Insurance Co.	368.97	
Ordinary Business, Corporation	224,115.64 at \$1.53	342,836.93
Real and Personal, \$10,250,252.00 at \$1.53	15,704.10	
Shares of Corporation, \$102,062.17 at \$1.53	1,561.41	
<b>Total</b>	<b>\$185,573.08</b>	

**EXHIBIT NO. 4**  
Statement of Alms House and farm, showing the expenditures from June, 1916, to June, 1917.

Blacksmithing	\$33.77
Carriage	18.00
Coal and Lumber	351.17
Drugs	2,129.58
Dry Goods, Groceries, etc.	321.95
Hardware	74.00
Interest on Certificates	68.71
Labor and Supplies	423.94
Miscellaneous	108.90
Physicians	150.00
Repairs	88.48
Salary of Wm. Ford	200.00
Salary of Miss S. E. Ford	120.00
Salary of Trustees	120.00
<b>Total</b>	<b>\$4,401.51</b>

**EXHIBIT NO. 5**  
STATEMENT OF KENT COUNTY BOARD OF EDUCATION From August 1st, 1916 to August 1st, 1917.

RECEIPTS		DISBURSEMENTS	
Balance in general fund, Savings Bank and Millington Bank, Aug. 1, 1916	1,925.74	Rent	488.00
Balance in Chestertown Bank	247.23	Repairs	907.73
Balance in Peoples Bank, Colored Industrial Fund, Aug. 1, 1916	723.43	Apparatus & Furniture	864.00
Oyster Licenses	1,052.83	Teachers' Salaries	51,012.05
State Tax	15,911.67	New Buildings	7,087.73
High School Fund	3,700.00	Sanitary Costs	3,672.02
Salaries paid by State	1,800.00	Kindergarten & Manual Training & Domestic Science	139.97
Tuition of Queen Anne pupils for year 1916-1917	378.75	Clerk	713.49
Tuition of Queen Anne pupils for year 1915-1916	378.75	Office Expenses	273.79
County Tax	41,221.00	Teacher	437.50
Check from Charles Williams	27.79	Expenses and equipment of Home Economics Teacher	221.10
Stores	7.50	Salary of Supt.	1,800.00
Check from Helen L.M. Comstock	2.00	Transportation of Supt.	200.00
Discount Notes and Interest	26,485.00	State Associations	59.18
Reading Circle Fund	15.00	Summers	525.00
Sale of Urvellie out-buildings	15.00	Deeds, recording and acknowledgment	2.35
Refund from Conservation Commission	147.43	Reading Circle Fund	19.50
County Tax Interest	195.83	Advertising and printing	135.50
Allowance for Domestic Economy from County	200.00	Discount notes and interest	2,977.33
Check from Choral Club	507.47	Salary of Supervisor	1,200.00
Free School Fund	2,977.50	Transportation of Supervisor	96.96
Check from Halle E. Cooper	30.00	Telephone	222.00
Free Book Fund	1,500.00	Insurance	46.77
Sale of Books	30.00	Box rent	139.23
Colored Industrial App'n.	1,500.00	Lights	46.77
<b>Total</b>	<b>\$99,718.78</b>	School Supplies	139.23
		Bond of Supt.	50.00
		Expenses	885.50
		Transportation of pupils	600.00
		Salary Attendance Officer	600.00
		Expenses and transportation	150.18
		Attendance Other	30.00
		Medical Inspection	25.00
		Music for rally day	25.00
		Diplomas and expenses	75.00
		Attorney to Board and special services	1,613.93
		Colored Industrial Expenses	2,848.16
		Cost of Books	2,848.16
		Libraries	80.24
		Freight and hauling, Sav.	80.24
		Balance in general fund, Millington Bank, Aug. 1, 1917	1,761.73
		Balance in general fund, Chestertown Bank, Aug. 1, 1917	1,141.12
		Balance in Book Fund, Chestertown Bank, Md., on Aug. 1, 1917	806.75
		Balance in Colored Industrial Fund, Peoples Bank on Aug. 1, 1917	611.10
		<b>Total</b>	<b>\$99,718.78</b>

**EXHIBIT NO. 6**  
PROCEEDS FROM SALE OF \$18,000.00 5 PER CENT. SCHOOL BONDS BY COUNTY COMMISSIONERS, AND HOW APPLIED.

Received from Alexander Brown & Sons	\$242.50	\$19,281.50
Handed to County Treasurer	823.50	
Handed to Galena School Committee	8,823.92	
Handed to Chestertown School Committee	4,671.48	
Handed to Fairlee School Committee	353.05	
Balance in The Peoples Bank to credit of G. W. Reinhardt, President		\$19,281.50

**EXHIBIT NO. 7**  
BONDED INDEBTEDNESS OF KENT COUNTY, MARYLAND

The following Bonds are outstanding.

Four 4 per cent. Refunding Bonds	\$4,000.00
Eight 5 per cent. Old School Bonds	8,000.00
Four 5 per cent. Kennedyville School Bonds	4,000.00
Forty-eight 5 per cent. Kent County School Bonds	48,000.00
Eighteen 5 per cent. Additional Kent County School Bonds	18,000.00
<b>Total Bonded Debt</b>	<b>\$82,000.00</b>

We hereby certify that we have examined the foregoing report and the books and vouchers upon which it is based and find it correct.

Respectfully submitted, WM. F. RUSSELL, THOS. G. WROTH, WM. G. ENYEH, County Auditors.

## PERSONAL AND SOCIAL

Mrs. Lee Robinson and mother, Mrs. J. Thomas Hadaway, took the latter's little son to Baltimore for medical treatment on Monday. This little fellow has been sick for several years.

Mrs. Lee Price, of Centreville, daughter of Mr. and Mrs. Charles S. Smith, who was operated on for appendicitis recently in Baltimore, is recuperating rapidly.

Miss Margaret Smith, of Goucher College, is home for the Easter holidays.

Mrs. Hess, of Evanston, Ill., is visiting her daughter, Mrs. Ingersoll, near Quaker Neck Wharf.

John Collins, of Johns Hopkins University, is visiting his parents during the holidays.

John Eliason, Esq., of Philadelphia, was a guest for the week-end of relatives here.

Mr. and Mrs. Hiram Eliason, of Philadelphia, have been guests of friends and relatives in Kent County.

Capt. Gault Applegarth, of New York, was a guest of his family here for the week-end.

Mr. and Mrs. Wm. T. Dixon, who have returned to Kent county with their little son, spent several days last week with Mrs. Dixon's uncle, Judge J. A. Pearce.

Mrs. Pearce Chrisfield has been visiting her daughter, Mrs. Wm. T. Dixon.

Mr. and Mrs. Allan Harris spent the week-end with Mr. Harris' sister, Mrs. Banning.

Harrison W. Vickers, S. Scott Beck and W. W. Beck, Esqs., were in Annapolis and Baltimore on business the past week.

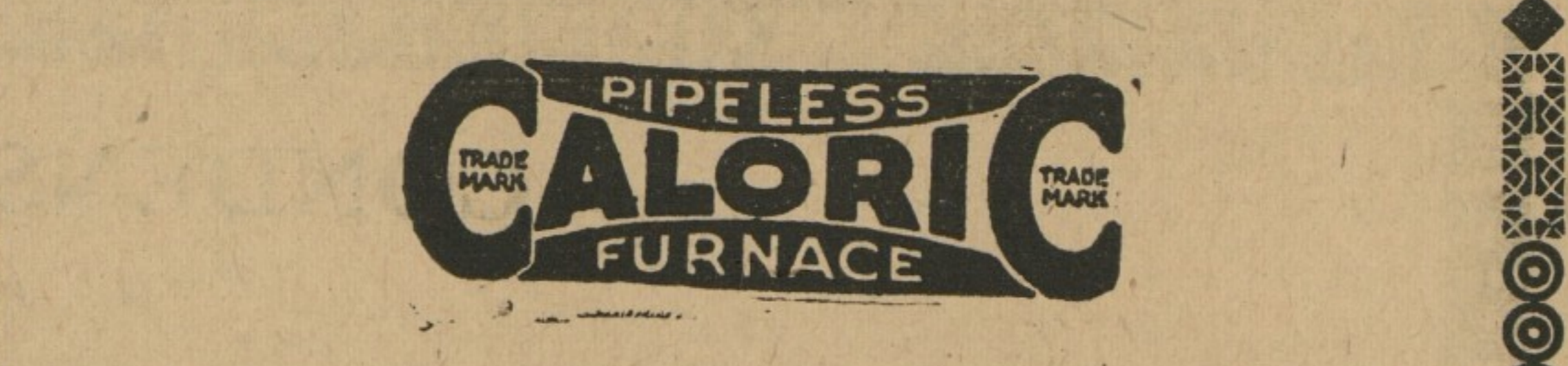
Mr. Robert Hendrickson, of Baltimore, was a guest of his parents here this week. Mr. Hendrickson has been in poor health and has gone to the mountains for several months.

Capt. Paul Wilkinson, of Camp Meade, was a guest of friends here for the week-end.

Dr. Harry Ivens and Mr. Morris Ivens, of Philadelphia, were guests for the week-end of their mother, Mrs. S. A. Ivens, who has been quite sick.

# TEN REASONS WHY

## You Should Have a



# IN YOUR HOME

### Health, Comfort and Convenience.

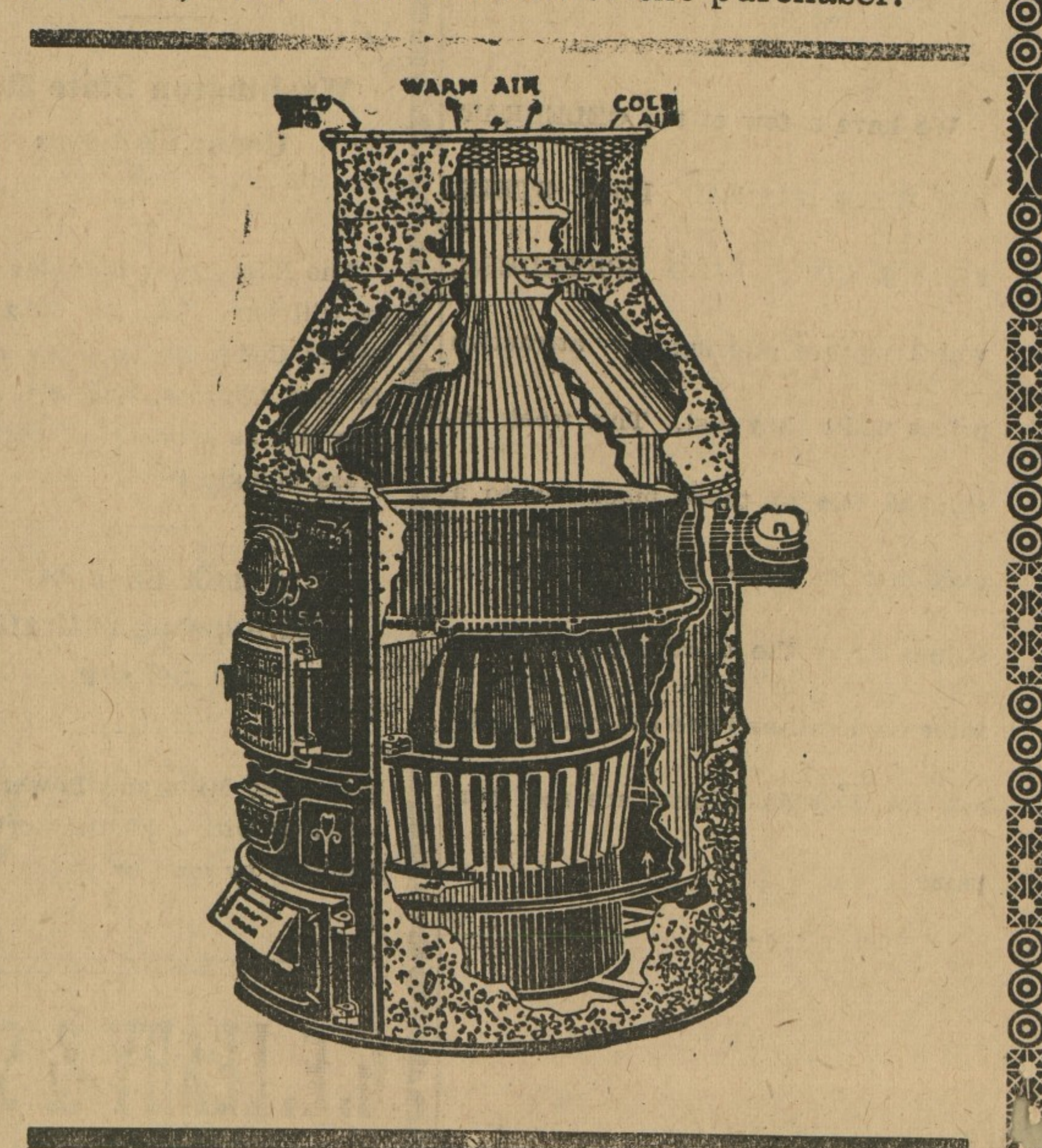
- 1—The Caloric conserves health by keeping an even temperature of circulated, moist, warm air throughout the house.
- 2—Heats from one to eighteen rooms with only one register.
- 3—Requires only a minimum amount of space. No pipes to obstruct the cellar.
- 4—Keeps the dust and dirt of fuel and ashes out of the house.
- 5—Does not heat the cellar, thereby permitting the storage of perishable products in the basement.
- 6—Maintains the proper fire with very little attention. All drafts regulated from floor above.

## ECONOMY.

- 7—Reduces coal bills. No heat is lost through radiation in the basement and walls. Every pound of fuel consumed delivers a maximum amount of heat directly to the rooms.
- 8—Can be installed in old buildings without the necessity of costly remodeling. Can be placed in new buildings with less trouble and expense than any other type of furnace manufactured.

## GUARANTEE

10—The Caloric Patented Pipeless Furnace is manufactured and guaranteed by The Monitor Stove and Range Company, an organization which has been making and selling heating appliances for 98 years. The Monitor Ironclad written guarantee, that is given with every Caloric Pipeless Furnace, insures satisfaction to the purchaser.



# F. B. HARPER,

STILL POND, MARYLAND.

Shake Into Your Shoes

Allen's Foot-Ease, the antiseptic powder for painful, smarting tender, nervous feet. It takes the sting out of corns and bunions. Over 100,000 packages are being used by the American, French and British troops at the front. Sold everywhere.

FALSE TEETH We pay up to \$12 for old or broken sets. Send Parcel Post or write for particulars. Domestic Supply Co., Dept. 24, Binghamton, NY.

## LIGHTNING

DOESN'T WARN US OF ITS COMING. The damage is done before we realize it—Buildings struck and lives killed. And then who suffers most? At the usual price of \$1.00 per set, we sell Lightning Lightning Rods for \$1.00 per set. Are you sure your policy reads that way? J. S. WHEATLEY & CO.,