

Toulson's Pharmacy

IT IS
Garden Seed
TIME

WE HAVE
A Full Supply

of all kinds for
your wants.

Toulson's Pharmacy,
Toulson's Building, Chestertown, Md.

**BEST QUALITY COFFEES AT
MONEY-SAVING PRICES**
DELICIOUS FLAVORS

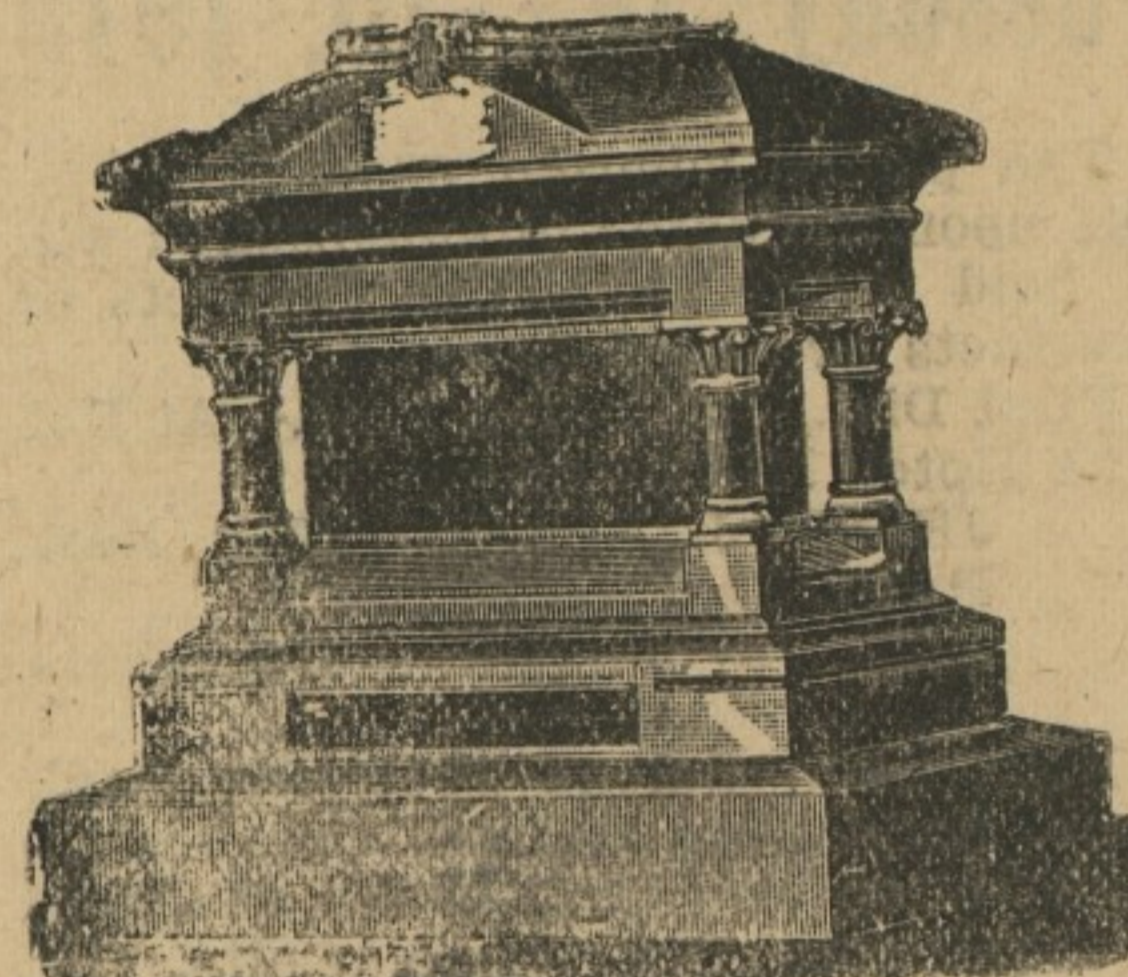
- Boscul, Santos & Java Blend 35c lb.
- Mercio, No. 1 Santos Blend, 30c lb.
- Carolina Belle, No. 1 Santos, 30c lb.
- Eastenda, a good quality, 28c lb.
- Selecta, none better for price, 22c lb.
- Special Blend, 15c lb.

RICE

- Finest Quality Uncoated Rice
 - Boscul, 1 lb. boxes, 15c.
 - First quality Blue Rose Rice, 14c
- SOFT DRINKS**
- Refreshing in hot weather
 - Clover Dale Brand, made of best mineral water and best flavoring.
 - Ginger Ale, Root Beer, Sarsaparilla.
 - 15 1-2 oz. bottles, 15c or \$1.75 a dozen.

FRANK A. HURLLOCK
PHONE 239 R.

28 YEARS EXPERIENCE
The Only Practical and Most Reasonable Price Dealer in the County



Granite and Marble of All Kinds in stock.
MARK THE UNMARKED GRAVE
This is the last thing you can do in memory of your loved ones, being the last thing you can do.
Take no chances, but place your order with a dealer that has learned the trade and understands every branch of it thoroughly.
Don't be indifferent about this very important matter.
We carry the largest stock in the county to select from.
CHESTERTOWN MARBLE AND GRANITE WORKS
J. W. KIRBY, Prop.
Phone 277.

**NOW IS THE TIME TO
Paper and Paint
Your House**

Get the BEST WORKMEN and the BEST MATERIAL. Don't waste good money on bad material. Masonry Paints are the best on the market. We are the sole agents for this district, and are always ready to show you price card and quotations.

We Will Paper Your Room for \$3 and upwards, and guarantee satisfaction or no money.

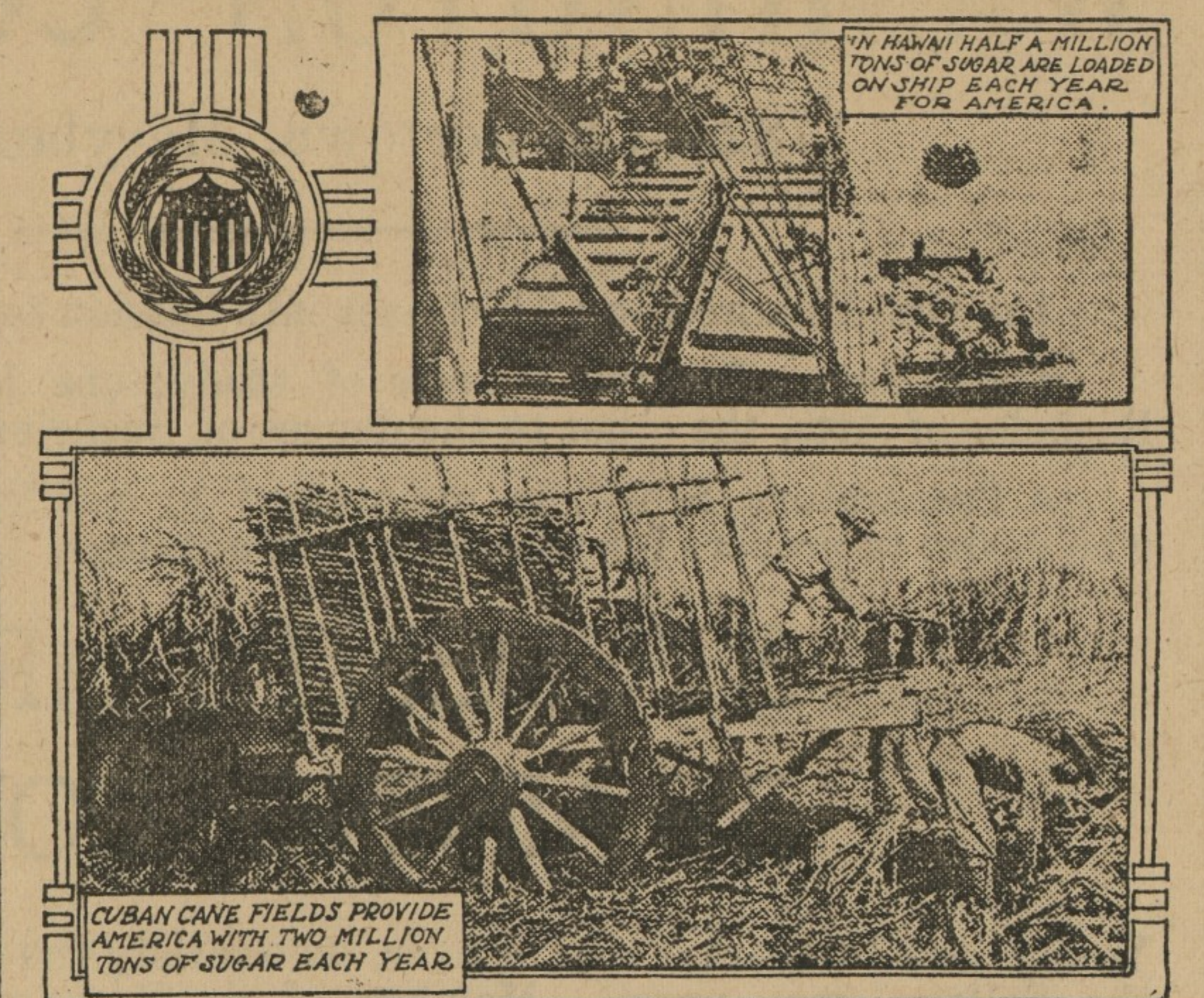
YOU WANT YOUR PICTURES FRAMED
and see our selections of moulding before you place your order. They are the finest in town. We can be found at the old stand, opposite Burk's shoe shop, on Cross street.
Yours for Business,
W. L. FOWLER.

BONES AND BAGS.

On account of the war many of our supplies of Bones have been cut off, and in order to get all the nice dry country bones possible, we have determined to pay about twice as much for dry bones as we used to pay, if they are delivered at our factory.
The country boys should pick up all they can and bring them to us instead of selling them to the junk dealers.
We will also pay the highest market price for good second hand Fertilizer Bags. Please communicate with us.
Very truly yours,

The Peerless Fertilizer Co.,
CHESTERTOWN, MD.

Ships & Sugar



OVER 75 per cent. of the sugar used in the United States is delivered by ships. There is produced about 800,000 tons of beet sugar and 250,000 tons of cane sugar in Louisiana. The total consumption of the United States is about 4,500,000 tons of raw sugar, which makes about 4,250,000 tons of refined sugar.

If our coasts were blockaded as Germany's now are, we would have available for the use of the people of the United States only one pound of sugar for every four we use. Under such circumstances there is no doubt that the American people would get along on this limited supply without complaint.

The United States Food Administration is asking every American household to use not more than two pounds of sugar per person each month for domestic use. Reducing our sugar consumption here means that we will be able to help supply the needs of France, England and Italy. Sugar conservation on the American table also means conservation of ships.

The Army and Navy have sent out an "S. O. S." call for ships. "Save Our Ships to Transport Troops and Munitions to France, in order that we may keep the fighting front where it now is and not allow it to extend to our own homes," is the message.

There is ample sugar in the world for all requirements—in fact, there is a large surplus, but on account of the ship shortage it is not available for use in this country.

Java, which produces 15 per cent. of the world's cane crop, is too far removed. It requires 150 to 160 days for a ship to go to Java and return.

**MUST USE LESS SUGAR;
ALLIED NEEDS GROW**

**Americans Asked to Use No More Than
Two Pounds Per Person
Per Month.**

**Shortage May Last Until Beginning of 1919,
When New Sugar Crop Arrives.**

After making a careful survey of the world sugar situation the U. S. Food Administration has asked the American public to use no more than two pounds of sugar per person a month until January 1, 1919. Increased sugar demands from the Allied nations—where the present sugar ration is already reduced to the lowest possible level—and the need of keeping our army and navy supplied are two of the leading causes of the curtailment of America's sugar ration. Americans are requested to make two pounds of sugar per person (half a pound a week) serve for all sugar uses in the household—including cooking and all sugar served at the table. Public eating places, as well as housewives, will be required to limit their use of sugar to two pounds for every ninety meals served. In the U. S. Food Administration's cafeteria at Washington, where employees of the Food Administration take their noon meal, one pound of sugar is used for every 120 meals served.

The U. S. Food Administration is confident that the American public will heartily agree to reduce household use of sugar here to a level more nearly equal to the present restrictions among the Allied nations.

The situation which the United States faces in its efforts to maintain a fair distribution of sugar to the Allied world is as follows:

The sugar supplies throughout the country, in homes, stores, factories and bakeries, are at low ebb; the production from the American beet and Louisiana cane crops have been disappointing; the yield in Porto Rico has likewise been smaller than anticipated, and the inability of the United States and the Allies to secure sugar from Java and other distant sources on account of the imperative call for ships for the movement of troops and their supplies has materially reduced the supply from such quarters. Added to this already difficult situation, the quantity needed by the Army and Navy greatly exceeds earlier estimates; we must send a large amount to France and Italy to take the place of the great volume lost through the German and Austrian invasions, during which much beet land was overrun and many factories destroyed; we have to supply certain quantities to neutral nations under agreements; and finally over fifty million pounds were lost recently through submarine sinkings off our Atlantic coast.

The Food Administration is confident that the American people, with the record of what savings behind it, have the ability to voluntarily save 140,000,000 bushels of wheat to the Allies after practically every bushel had been exhausted from our normal surplus, will with the same spirit save the sugar situation of the world.

Learn to Get Along Without Sugar

It has been done before. A hundred years ago refined sugar was unknown. Our ancestors used honey and you can use honey also. Besides there are syrups. The natural sugars of fruits will serve today as they did centuries ago. You will get all the sugar you need in this way. The Allies do it now. England, which before the war used more sugar than we did, has but two pounds per head a month now; France one and a half pounds, and Italy only on your ration. This is but a slight sacrifice as compared with all that the Allies are doing. Do it yourself.

AUCTIONEER E. A. STROUT FARM AGENCY

THIS IS TO NOTIFY THE PUBLIC THAT HAVE REMOVED TO CHESTERTOWN AND AM PREPARED TO CRY SALES IN KENT AND QUEEN ANNES COUNTIES ON REASONABLE TERMS.
JOHN T. JESTER, Auctioneer.
G. B. TAYLOR SURVEYOR.
Farm surveys for area, division lines and re-arranging lot lines.
Laying out ditches, drains and grading.
Maps, plots and line prints.
High-class work, moderate charges.
P. O. Chestertown or Millington, Md.

New York, Philadelphia, Boston, (Largest in the world)
YOU FURNISH FARMS WE FURNISH BUYERS
We Are Reliable
Our Agents Bonded
Call, Write, Phone
H. T. JEWELL, Chestertown
JOSHUA PRICE, Millington
Agents.
Town Building Lots and Town Properties also for sale.

HAVE THEIR OWN TROUBLES

By No Means an Easy Task for Stokers to Hit the Furnace Door When Ship Rolls.

It was while I was being initiated into the technique of stoking by showing coal under the hollers that a change of course brought the scurrying seas dead ahead, and set the ship rolling even more drunkenly than before, writes Lewis R. Freeman in Popular Mechanics Magazine. After falling to hit the "dark spots" and "hollows" two or three times as I staggered to the roll, and once even missing the furnace door itself, one of the stokers, taking compassion, relieved me of the scoop and put the trouble right with a half-dozen quickly tossed shovelfuls. I was frankly glad to work over to where I could take a "half-nelson" round a bar by the starboard bunker.

A heavy slam-banging from the opposite end of the boiler room indicated that things were not going quite so smoothly there, and edging cautiously along, I was presently able to get some inkling of the cause from the words of a volubly cursing stoker who loped out to tell me that the "blinkin' skip 'as took charge." Rubbing a bruised shin and glowering balefully from a blackened eye which appeared to have been bumped against a boiler, he explained, in language more effective than elegant, that some impractical theorist had encouraged them to experiment with wheels on the side of the skip, with the idea of making it easier to push about over the coal-cluttered deck. In the picturesque language of the sea, it had "taken charge" and so effectively that one swift, straight rush to starboard, followed by a "gooply" progress back to port, put every man who, either by chance or intent, barred its way, more or less hors de combat.

Straight down the one-in-three incline from the port to the starboard bunkers lolloped the juggernaut, dashing the protesting anatomies of the stokers to left and right as it went. Spitting blood and oaths indiscriminately, one man clung to it all the way, however, and he also it was who—taking advantage of the fill—finally rendered it harmless by pushing it over on its side, where it was left wiggling impotently like an overturned turtle.

Primroses.

I was at the railroad station in London, England, when the ambulance train came, says a correspondent, and as the stretchers were gently lifted out I felt picked up a damp little bunch of primroses and wood anemones which had fallen at my feet.

A pair of quick eyes, slightly dimmed with pain, noticed. "They're mine, miss, if you don't mind—must have fallen off of my blanket—arms no use at present, as you see."

I made the posy quite safe this time, near enough to his face for the fresh smell of the moss which still clung about the stalks to reach him. I wish that whoever had gathered and tied up all these little posies in some peaceful woodland spot, and sent them with such care to Waterloo labeled, "For the Wounded," could have been standing by my side that night.

Malaria Attacks Army.

The Annales de Medicine says, on the authority of DeLille and his co-workers, "that the epidemic of malaria that has affected the armies operating in Macedonia forms, if not the most important, at least one of the most important, epidemics known in history. Not since the armies of Xerxes were decimated by malaria in that same region has there been a situation comparable to that of these modern forces in Macedonia and the Balkans and marshes. The extreme gravity of the infection, the early and large proportion of pernicious cases, the apparent failure of preventive doses of quinine, the prevalence of malignant tertian malaria and the frequency of hemoglobinuria were special features."

Little Bread Winners.

Before the war 250,000 British schoolchildren under fourteen years of age were working for wages out of school; since the war the number has largely increased. Here are a few instances: A boy of ten working forty-seven and three-quarter hours a week in addition to attending school; a boy of eleven years working two and a half hours before school, two and a half hours after school, and thirteen hours on Saturday; a boy of twelve working one hour before school, one hour at midday, four hours after school, and thirteen hours on Saturday.

Saving Ice.

In response to a request by the food administration that the use of artificial ice be reduced to a minimum, a large hotel of New York city has posted a notice in each room asking that guests use ice sparingly. The result has been a reduction in the calls for ice water. Ammonia is used in large quantities in making artificial ice and, because of the demand for this important chemical in the manufacture of explosives, a shortage has been created.

Appropriate.

Mr. Bacon—Are you through with that bonnet you wore last winter, dear?
Mrs. Bacon—Why, yes.
"May I have it?"
"I suppose so. But what do you want it for?"
"I want to use it on the scare-crow I'm going to put out in the cornfield."

CHESTERTOWN and TOLCHESTER Automobile Schedule.

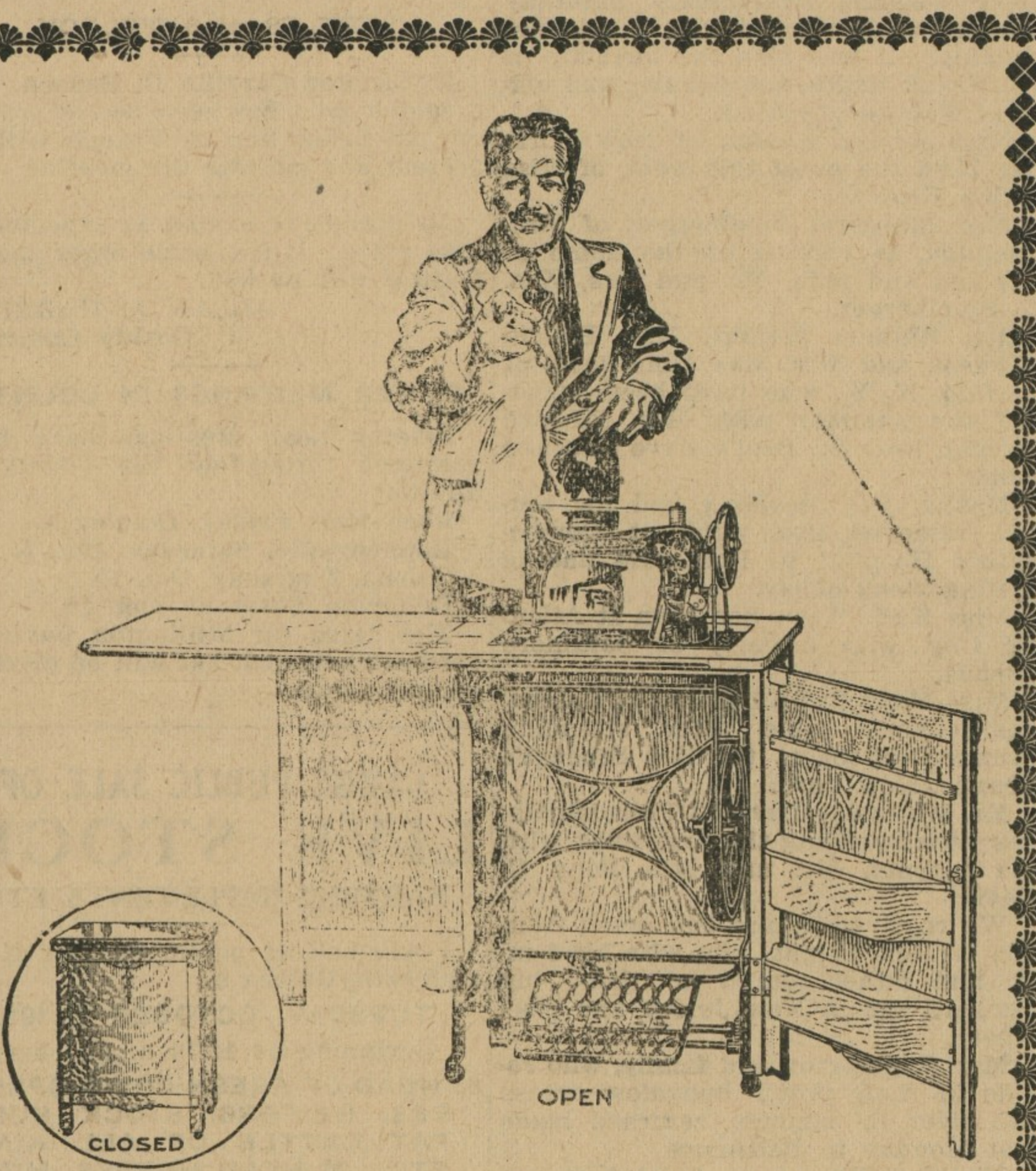
We leave the Voshell House, High street, Chestertown, direct for Tolchester Mondays, Tuesdays, Wednesdays, Fridays and Saturdays at 9:45 a. m. and 2:45 p. m. Will leave for Chestertown arrival of boats at Tolchester, Fare, with war tax included, 85c each way; 50c each way for children under 12 years when they occupy seats.
No more late boats.
Will call for passengers when notified in time, but BE READY, DO NOT KEEP CARS WAITING. Engine starts whenever it is possible when coming by Tolchester.
When boats cannot land at Tolchester will serve Chestertown passengers at Belterton.
Call phone 212-2.
VERNON M. BARNETT,

SACHS SHOES

OFF TO SCHOOL AND WEARING SACHS' SCHOOL SHOES

Why worry or fret about where to buy the right shoes for your child, when here at SACHS' SHOE STORE you will not only find the largest and most complete stock of Children's Shoes in town, but our prices will suit your pocket book.
We sell both the EDUCATOR and narrow widths, to fit the broad or narrow feet, especially made for the active BOY or GIRL—made to give service, comfort and longest wear for every dollar of their cost. Bring the children in NOW.
WE ARE CONSTANTLY RECEIVING NEW MODELS to our already large stock of LADIES' AND MEN'S BEAUTIFUL FALL HIGH SHOES.
SEE OUR SPECIAL MEN'S WORK SHOES.
WE FIT YOUR FEET CORRECTLY AND COMFORTABLY.

SACHS HOE FOR STY LE AND Service
A. SACHS, GRADUATE (PRACTICEDIST) ARCH FITTER.



The Best in 'his Pack
THE FREE SEWING MACHINE

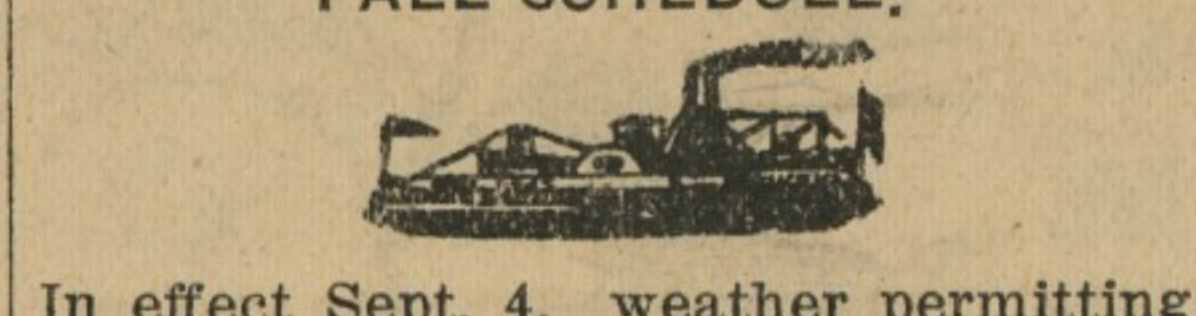
THIS is a day of necessity—not extravagance and Santa's gifts are consistent with the day. Not foolish trinkets and novelties but necessary articles like a sewing machine—a sewing machine which will enable you to cut your clothes bill in half.
Santa has left the FREE sewing machine above illustrated at my store for your inspection. Coom in and let me show it to you. If you decide hat you want to own it.

We Will Allow You \$12.00 For Your Old Sewing Machine.

JOHN BARTLEY,
Chestertown, Maryland.

Tolchester Company

FALL SCHEDULE.



In effect Sept. 4, weather permitting.
SASSAFRAS RIVER LINE.
Mondays and Wednesdays steamer will leave Fredricktown at 6:30 a. m., Betterton 7:45 a. m., Worton Manor at 8:45 a. m., Tolchester 9:45 a. m.
Tuesdays and Saturdays steamer will leave Baltimore at 2:45 p. m. for all of the above landings. Does not stop at Tolchester on Saturday. On and after October 15 leave Baltimore at 2:30 p. m.
Port Deposit and Havre de Grace Line
Mondays, Wednesdays, Thursdays and Fridays steamer leaves Baltimore at 2:45 p. m. for Tolchester, Betterton, Havre de Grace and Port Deposit. On and after October 15 leave Baltimore at 2:30 p. m.
Tuesdays, Thursdays, Fridays and Saturdays steamer will leave Port Deposit at 6:30 a. m., Havre de Grace at 7:00 a. m., Betterton at 8:15 a. m., Worton Manor (Friday) at 9:00 a. m., Tolchester (except Saturday) at 9:45 a. m.

Tolchester Saturdays
Beginning September 7th
Steamer Emma Giles will leave Baltimore at 7:00 a. m. and 2:30 p. m. Leave Tolchester at 9:00 a. m. and 4:30 p. m.
For further information apply to agents at different wharves or
TOLCHESTER COMPANY,
a31-4t. Pier 15, Light St., Balto., Md.

Dr. H. C. HUGHES, Dentist.

Local anesthetics used extracting Crowns and Bridge Work. Special attention given to children's teeth.
OLD TRANSCRIPT BUILDING, CHESTERTOWN, Maryland.
Subscription to the Transcript \$1.00 per annum.

WELCOME WELCOME

WELCOME

If you are in need of a

FARM WAGON

call and examine our shop-made Wagons and DEARBORNS. Also outline of

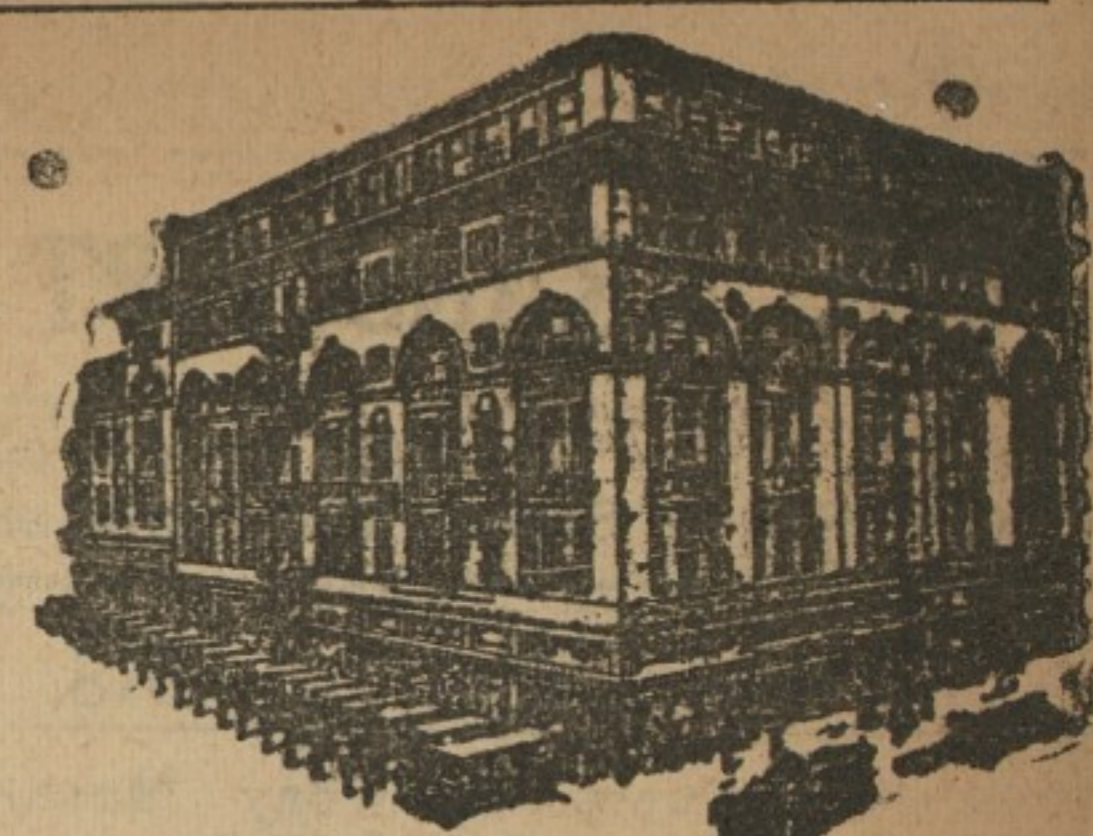
Agricultural Implements,

consisting of

New Idea and Steel Clover Head Manure Spreaders, C. B. and Black Hawk Corn Planters, No. 11 Oliver Sulky Plows, Walking Plows and Cultivators No. 4 Int. and Ohio Sulky Cultivators, McCormick and Osborne Spring Harrows, Clark's Cutaway Harrows, McCormick and Thomas Crown Double Speed Mowers.
American Fence and Poultry Wire. Barb and Smooth Wire and Staples. Carriage and Wagon Harness, Rope Traces, Hames, Lines etc.
All kinds of REPAIR WORK Promptly Attended to Give us a call.

Shafer, Redmile & Co

KENNEDYVILLE, MD.
Subscription to the Transcript \$1.00 per annum.



Hochschild Kohn & Company
Howard & Lexington Sts. Baltimore

We Suggest That You Open a Charge Account

as a means of simplifying your shopping by mail. The privileges of such an account will be extended to any responsible person who will furnish us with satisfactory references.

All our accounts are operated on a thirty-day basis—goods bought during one month are charged, and statement rendered and payment made early in the following month.

With the opening of such an account, it will not be necessary for you to send check or money order for merchandise ordered by mail—such goods will be charged to your account, and payment made as stated above.

Through our Mail Shopping Service you can be served satisfactorily as if you came to the store in person. A charge account makes such shopping even more convenient.

May we number you among our thousands of charge customers?

Hochschild, Kohn & Co
Baltimore, Md.

DING! DONG!

The time is not far distant when the welcome school bell will call the children from vacation to begin again the work on the foundation of their educational career.

To do their school work well they must have Supplies and we are the best equipped store in Kent County in SCHOOL SUPPLIES.

A full line of Pencils, Tablets, Erasers, Ink, Rubbers, Composition Books, etc.

"Guardians of Your Health For Over 100 Years"

Professional Pharmacologists for over 100 years.

THE STAM DRUG CO

Subscription to the Transcript \$1.00 per annum.