

PENNSYLVANIA RAILROAD

Bulletin.

THE STEEL COACH—A TRAVEL SAFEGUARD.

The Pennsylvania Railroad now has in operation on its lines east of Pittsburgh over two hundred passenger coaches, dining cars, baggage cars, and mail cars of the new all-steel type.

The solid steel framework of these cars, designed to resist shock and minimize the dangers of collision, is further strengthened by the steel sheathing enclosing the body of the car. In fact, everything about the coach is steel, save the window frames, the cushions of the seats and the flooring. Such little woodwork as enters into the make up of the coach, the plush with which the car seats are covered and the hair with which they are stuffed is treated to a fireproofing process, whilst the floors are cement, thus rendering the coach at once practically indestructible and thoroughly fireproof. It is built like a battleship.

The new coach is longer than the standard car generally in use on the railroads of this country, and has a comfortable seating capacity of sixty to ninety people according to the style of the coach.

The unusual weight of the coaches give to them a solidity that greatly increases the comfort of the passenger.

The seats are adjusted to a more convenient space and angle, the coaches are all lighted with electricity and amply ventilated in winter as well as summer by new and thoroughly tested methods.

The interior finish of the coach is plain though pleasing to the eye. The absence of ornamentation enhances the idea of strength and at the same time assures absolute cleanliness and thorough sanitation.

Steel cars are now in use on the principal trains between New York, Philadelphia, Washington, and on the Main Line between Philadelphia and Pittsburgh. The number of cars is constantly being increased as the finished product comes from the shops.

The Pennsylvania Railroad's equipment is recognized as the Standard of America.

MAXIMUM QUALITY MINIMUM PRICE

A. L. Sparks' Emporium

A SPLENDID STOCK OF

Dress Goods

When the quality can be thoroughly depended upon and the price is entirely moderate, the buying proposition becomes a very simple matter.

Here we offer you the very best that is possible to buy, show an extremely large assortment including all the new and popular shades and the range of prices makes it possible for every one to find something here exactly as wanted.

SILKS SILKS SILKS

The price of silks have advanced very materially but we are still offering our guaranteed 36 inch black taffeta at \$1.00 per yard.

Over twelve hundred yards sold in the preceding twelve months without a dissatisfied customer.

DOMESTICS DOMESTICS

We are selling staple muslin at wholesale prices, our purchases before the advance enable us to do this.

MILLINERY MILLINERY

The Rich and Refined in Millinery has full an eloquent expression in this department of our store.

Efforts intelligently directed are productive of results beyond precedent in the all-important questions of style, elegance and quality.

Your attention is directed to our extremely low prices.

This Department has stood the test of a careful buying public for years and is now complete with an array of stylish and up-to-date garments not often seen except in a city store.

Our well-known low prices are a large factor in the successful business done in this department.

Come and see us, we can show you our stock much better than we can tell you about it.

Arlington L. Sparks

CHESTERTOWN, MARYLAND.

CHRISTMAS SUGGESTIONS!

(JUST A FEW)

Nothing you can think of will be more acceptable, more lasting in the memory of your friends than a Beautiful Art Square, in Axminster, Velvet, Brussels or Ingrain; a nice Rug or Picture, Cushion or Rooker, covered in velvet, tapestry or imitation leather; Chiffonier or Dressing Table, Combination Desk, Bureau and Washstand, white Enamel Bed, Morris Chair, Pair Portieres or Lace Curtains, a Hassock or two, Carpet Sweeper or Toilet set. Be sure and come and look our stock over. We want your trade. And Come early.

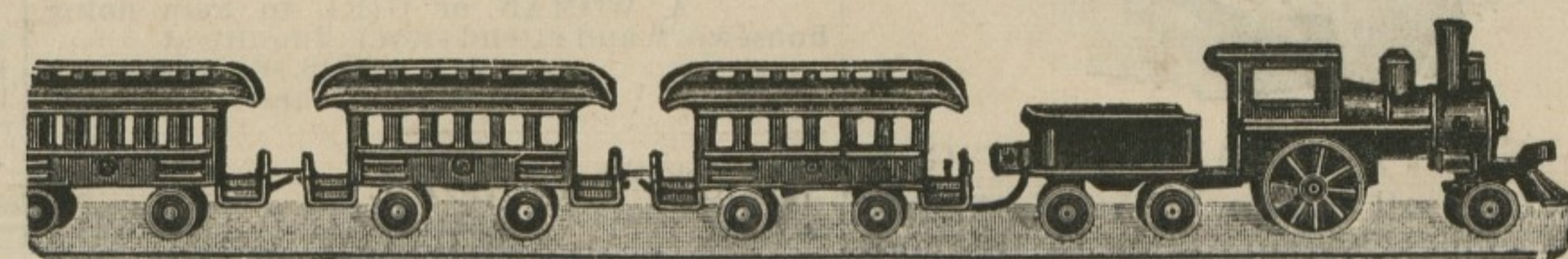
JOHN BARTLEY

(FURNITURE)

Chestertown, Maryland

A Whole Boat Load of Christmas Goods

has arrived at COHEN'S SANDY BOTTOM DEPARTMENT STORE and we bought them so low that we can sell them lower than any other store in Kent county so bring the children to see our stock and they will be happy and see Old Kriss.



Toys Toys Toys

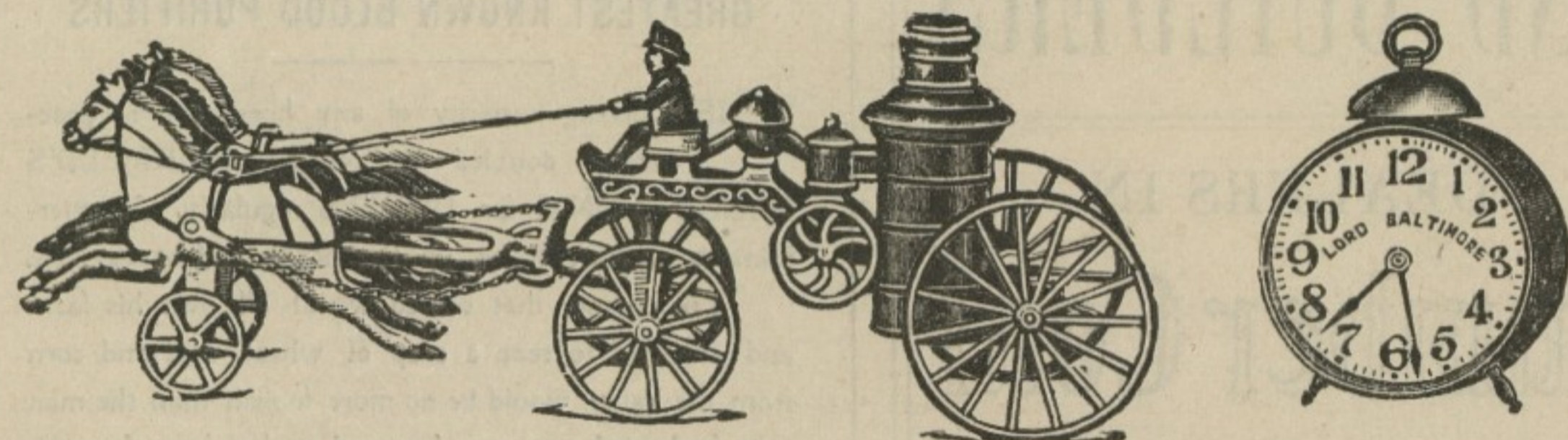
Such as Automobiles, Iron Express Wagons, Hobby Horses, Wheelbarrows, Shootly, Velocipedes, Doll Babies of all sizes and of every description, and Beds, Cradles, Chairs, Rockers, Little Piano, Rifles, Pistols, Sleighs, Children's Stoves, Trampets. All of the above Toys must go at a sacrifice price and we have so many Toys that we had better sell them at cost than carry them over for another year, so come early and get a bargain.

On account of not having floor space to put our immense stock of Christmas goods, we will SELL OUR FURNITURE AT COST PRICE. Now it is a chance for you to come and buy your Furniture cheap.

Also Matting from 10c yd. on up.....18c yd.
Oil Cloth during Christmas, only.....18c yd.
Also bought at sheriff's sale last week 2 big rolls of all-wool Carpet that was sold at 60c a yard, now we can sell it for.....33c yd

This is in my opinion the best value I ever came up with and you will think the same when you see it.

Now the weather is getting cold and wet we will sell Airtight Stove for 99c up to \$10. We are agents for Farmer Oil and Excelsior Cook Stoves and will sell them at factory prices on time or cash.



Leather and Gum Boots

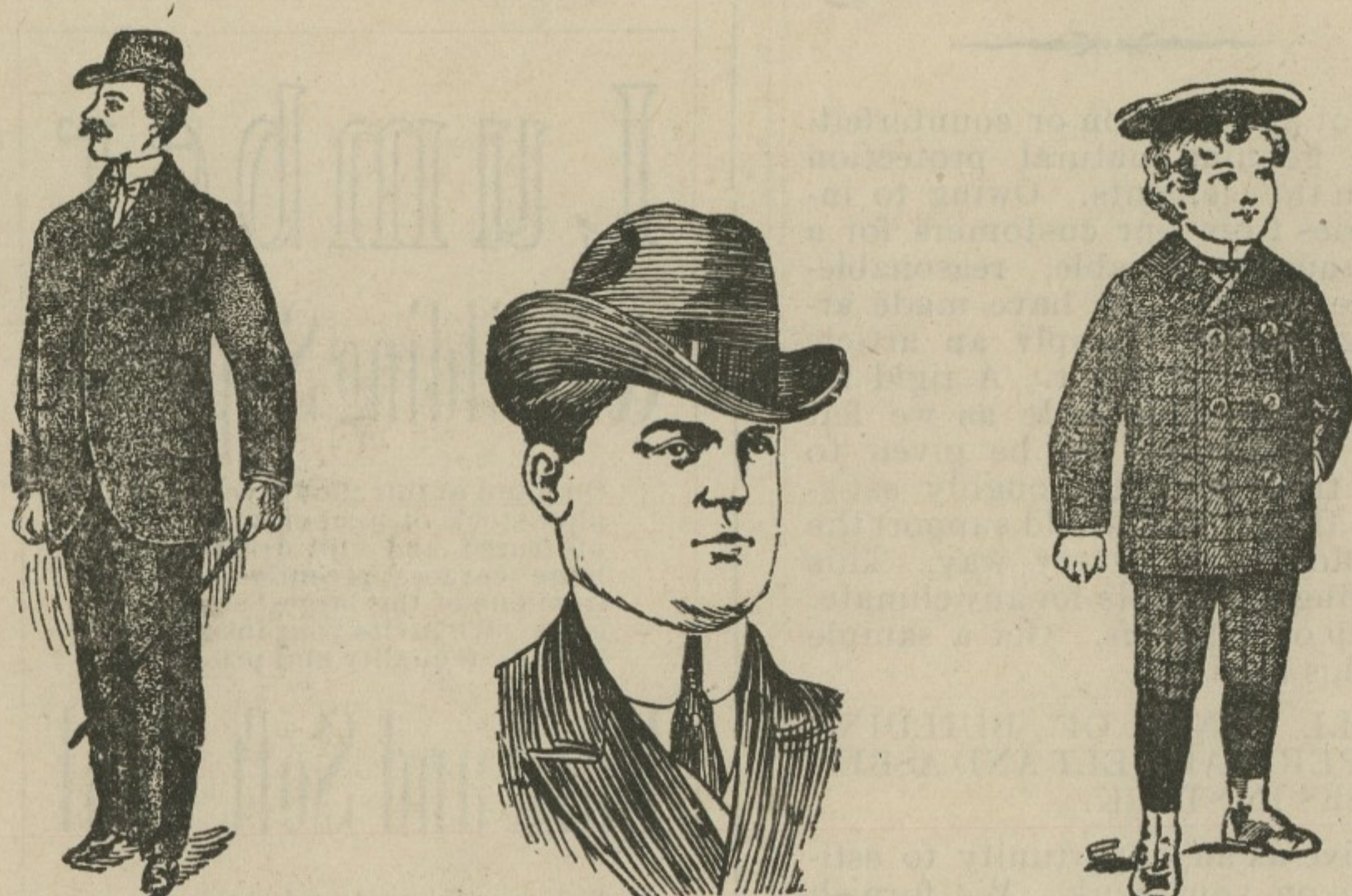
REDUCED TO 25c ON EVERY PAIR.

\$3.50 Woonsocket Snag Proof to.....\$3.25
\$4.00 Goodyear Brand Snag Proof.....\$3.75
\$4.00 Ball Band Snag Proof Gum Boot.....\$3.75

AND ALL OTHER GUM BOOTS REDUCED IN PRICE.

\$2.50 Men's High Top Leather Shoes, now.....\$1.90

Men's and Boys' Clothing



Men's All Wool Pants that sold for \$3.00, now go for.....\$2.50
Men's Dickey's Kersy Pants that sold for \$2.00, now go for.....\$1.50
Men's All Wool Kersy Coat that sold for \$3.50, now go for.....\$2.50
\$5.00 All Wool Suits will be sold now for.....\$5.00
Boys' Suits from.....75c to \$5.00
Men's Oil Skin Suits, coat and pants, Cape Ann.....\$1.15
Men's 50c Sweater Coats, now at COHEN'S at cost.

Blankets and Comforts

We will sell a good Horse Blanket for.....75c
A Good Stable Blanket that we sold for \$1.50, now.....\$1.19
We have Comforts and Blankets that sell up to.....\$5.00
During our Christmas selling we are going to sell a \$1.75 Nickel Plated Lamp.....\$1.25

Fresh Line of Groceries

We Are Still Headquarters for Groceries

American Granulated Sugar, all you want.....3c
15c Pound Package Coffee go now at.....12c
The Very Best 12c Loose Coffee go now at.....10c
The Best Pulverized Sugar go at.....5c
Every merchant is cutting down Flour to \$4.00, our price.....\$4.25
Buckwheat, per 100 pounds, only.....\$3.25

CANDY AND NUTS

RAISINS, CURRANTS AND CITRON.
Ladies I would advise you to be very cautious in buying your fruit because there is on the market a big lot of cold storage fruit and I bought my stock of fruit one week ago. A lady saw me order it direct so the only place to buy fresh fruit is at COHEN'S.
Mixed Nuts, per pound.....10c
Butter Nuts.....10c
Paper-shell Almonds.....10c
Best New English Walnuts.....12c
Country Walnuts.....12c
Filberts.....11c
Peanuts, quart.....4c
New Dates, 1 pound packages.....6c

Fig. 1 pound packages.....10c
1 Package New Raisins, the very best, go at Cohen's.....7c
1 Package the Best Currants.....7c
Citron, the best, at Cohen's.....10c lb
Walter Baker's Chocolate, per lb. at Cohen's.....30c
Baker's Best Chocolate is the chocolate that has a picture of a lady on the outside wrapper.

CANDY

French Mixed Candy, only.....6c lb
Oranges, per doz.....15c, 20c and 25c
Lemons, per doz.....15c
Cranberries and Apples at low prices.
All kinds of ground spices and all kinds of essences.

We Want 1000 Dozen Eggs

And will pay 2 cents dozen more than any other store in Kent county.

ABE COHEN, THE LEADER OF LOW PRICES

Kent News

ESTABLISHED 1841.

SUBSCRIPTION \$1.00 PER YEAR

W. M. B. USILTON, JR.
PUBLISHERS AND EDITORS.

SATURDAY, DECEMBER 19, 1908.

The News wishes all its readers a healthy, hearty, happy Christmas

JEFFERSON D. BELTZ was stabbed in the stomach and seriously injured Tuesday night by his wife, Susan Beltz, at their home in Cecilton. He was taken to a hospital at Wilmington at three o'clock and his condition reported critical. Mrs. Beltz was arrested and brought to Elkton jail by Constable Milliker. This couple had not been living happily for some time.

The total popular vote of the Presidential candidates at the last national election was made known this week. The totals show the following votes cast:

TAYLOR, Republican.....7,227,272
BRYAN, Democrat.....5,928,122
DEBS, Socialist.....418,423
CLAYTON, Prohibitionist.....241,222
HISEN, Independence.....85,122
WATSON, Prohibitionist.....32,521
GILHAUS, Socialist Labor.....15,421

Total for all candidates.....14,822,239
This grand total exceeds 1,341,531 the total number of votes cast in the Presidential election of 1904, when the grand total was 13,510,708.

Compared with election of 1904, the candidates of the Republican, Democratic and Socialist parties increased their vote this year. The reverse is true of the candidates of the Prohibition, Populist and Socialist Labor parties. The Independence party did not figure in the contest of four years ago.

STILL POND ITEMS.

Mrs. E. H. Collins spent the past week with relatives in Wilmington.

Mr. Herman Robinson has returned home after spending some time with relatives in Philadelphia.

Mr. Tom Mann spent Sunday and Monday with relatives near Millington.

Mrs. Lena Axtell is the guest of her sister Mrs. Florence Watson, of Newark, Del.

Mrs. William Parr and daughter, Lucille spent several days in Baltimore.

Mr. and Mrs. Leonard Price visited Baltimore this week.

The Epworth League business and social meeting was held on Thursday evening at the home of Mrs. John Schofield.

Our merchants have been busy this week with Christmas buyers from everywhere and our merchants have a fine line of novelties to show them. Don't fail to visit Still Pond and convince yourself of their many bargains.

Our Sunday school will hold their Christmas tree entertainment on Tuesday evening Dec. 29th. Don't fail to come and see Old Santa.

In the absence of District Superintendent W. C. Koons, who as a delegate, was attending the Federal Council of Churches in Philadelphia, our pastor, Rev. E. H. Collins, held the third quarterly conference. Excellent reports were made from both Still Pond and Betterton Churches. The pastor, Rev. E. H. Collins, was by unanimous vote invited to return to the charge for another year. Pastor Collins thanked the people for their kind and wholehearted invitation, yet stated that he desired a change at the next conference which meets in Millford, March 17, 1909.

Our Sunday services were excellent, and you miss a rare treat when you fail to be present. The pastor will speak next Sunday morning from the following subject: "The Beatitudes of a Christmas Life," and in the evening will speak on "Lot in Contrast with Daniel," whom he spoke on last Sunday evening. A cordial welcome awaits you.

The Sunday following Christmas Day—Dec. 27th—a Christmas offering will be made, and all indebtedness up to January 1st is desired by the pastor, to be met. If you cannot come send your Christmas offering for that Sunday.

REAL ESTATE CHANGES

The real estate market has been quite active this month, especially in the neighborhood of Barclay. The following sales have been reported:

Mr. J. B. Metcalf, of Virginia, has purchased two farms near Barclay—the W. O. Price farm of 100 acres for \$5000, and the Jessie Phillips farm of 200 acres for \$10,000. Mr. Metcalf, who is the father of Mrs. Dudley G. Roe, bought these farms as an investment, and should they prove paying propositions, it is likely that he will invest in more Queen Anne's county real estate.

Mr. Howard Willson has sold his farm near Hayden Station, containing 100 acres of land, to Mr. Wm. R. Leazer, the price reported to have been \$5,000.

Mr. David T. Wallace has purchased of Mrs. J. Harry Wallace her residence in Barclay, the purchase price being \$1350. Mr. Wallace recently purchased the mercantile business of the late J. Harry Wallace and will move to Barclay next year.

A New Dolly Madison tailor made shoe embracing all the merit of the now famous line—with a higher grade of upper leather and sole—retailing for \$4.00. The best grade of leather known in the making of women's fine shoes.

R. F. PARKS & SON

Buyers of Christmas Goods Look to Your Interest

We have the substantial, desirable, ornaments, too. Big values; spot cash price.

Bring Your Eggs

From now until December 24, we will pay from 3c to 5c over Baltimore or Philadelphia market quotations for nice, fresh, clean Eggs. Must be clean and fresh.

DRESS SUIT CASES,
TRUNKS AND VALISES,
AUTOMATIC TRUNKS,

Outing Flannel Values, 10c to 10½c, go 10 yds for 86c
Dress Gingham Values, 10c to 12c, go 10 yds for 85c
Canton Flannel Values, 7c, go 10 yds for 58c
Muslin Goods, soft finish, bleached, 10c and 12½ values, 10 yards for 78c.

Table Linen, special 25c values, 2½ yds for 50c
Crash, good twill for Roller Towels, - 3½c per yard

NEXT TUESDAY—10 yards very best Apron Gingham manufactured for 62½c.

NEXT TUESDAY—One pair 80x90 Bleached Sheets for \$1.00.

Special Values in Towels, from 5c to \$1.00. Look at our stock.

BLANKETS, BLANKETS, White, Red, Grey and Plaid. Blankets for the rich, blankets for the poor and blankets galore. Oh, we have them, from 55c per pair to \$10.50. More blankets, better blankets, than all.

COMFORTABLES, TOO. New stock, fluffy, light, \$1.00, 1.25, 1.62½, 2.00, 2.75, 3.87, 5.00.

QUILTS for single beds, Quilts for double beds, Quilts with fringe, Quilts without, in prices ranging from 75c to \$4.00.

Dress Goods

SUPERB HANDSOME BEAUTIFUL

All the very newest up-to-date patterns. We have purchased this line carefully, using good judgment and rare taste. Allow us to show you our stock.

A very beautiful Broadcloth, all colors, and 52 inches wide, at.....98c

A choice line, all colors, Broadcloth, ranging in price per yard from.....98c to \$1.75

Our Chiffon Broadcloths, 52 inches wide, can never be duplicated at.....\$1.98

We make a specialty of Black Dress Goods, Mohairs, Serges, Cheviots, American Cloth. A beautiful Herringbone Cheviot at.....85c

Fine 36-inch Serges, all colors and all wool, from.....48c to 57½c

Extra All-Wool Serges, colors... 60c to \$1.25

Silks Silks Silks

ALL COLORS

A Very Handsome Black Taffeta, 36 inches wide, at.....98c

Mattings Mattings

ALL KINDS ALL COLORS ALL QUALITIES

Japanese and Chinese Crex Grass Matting, per yard, from.....12½c to 60c

Linoleums Oil Cloths

Linoleums from 39c square yard to 65c.

Carpets Carpets

All-Wool Ingrains New and Beautiful Patterns

Cotton Chain, Wool Filling, per yd 20c to 50c

All-Wool, absolutely all-wool, 3-Ply; also Stair Carpets, Best Brussels and Ingrains.

Leather and Gum Boots

Shoes, Rubbers. Anything and Everything.

Boots and Shoes of every Description in this line.

The Best Man's Blucher Satin Calf Shoe in the town for.....\$1.24

Horse Blankets, Robes

A Handsome line of Extra Size Horse Blankets. Large Size Blankets.

R. F. PARKS & SON,

CHESTERTOWN, MARYLAND