

## Bark Canton Sacket's Log Book.

Sunday December 23<sup>rd</sup> 1860

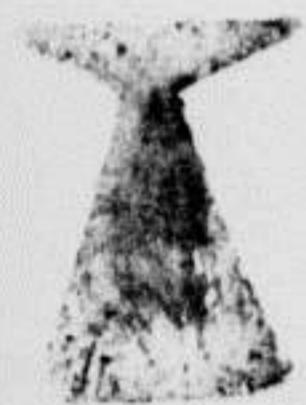
Begins with light breeze and haze from the S.E. ship heading to the E.S.E. middle part middle part at 10 A.M. saw the three kings bearing E.S.E. distant 8 leagues spoke the George of N. Bedford St. Michael at 1000 whaler and 400 sp.

Latitude 33.50 S.  
Longitude 171.50 E.

Monday December 24<sup>th</sup>

Begins with light breeze and pleasant from the E. ship heading to the S.E. middle part the same. In the part at daylight saw a pod of large sperm whales going quick to the S. the George in company saw one and chased till morning came on board but succeeded in striking.

Latitude 34.20 S.  
Longitude 170.58 E.

Tuesday December 25<sup>th</sup> 1860

Begins with light breeze and fog from the S. ship heading to the E.S.E. middle part same.

Latitude 34.28 S.  
Longitude 170.48 E.

Wednesday December 26<sup>th</sup>

Begins with light breeze and rain from the S. ship heading to the E.S.E. middle part latter part much the same.

Latitude 34.30 S.  
Longitude 171.10 E.

Thursday December 27<sup>th</sup> 1860

Begins with moderate breeze and haze from the S.E. ship heading to the E.S.E. middle part the same latter part saw the three kings bearing S.W. distant 8 leagues.

Latitude 34.10 S.  
Longitude 171.50 E.

Friday December 28<sup>th</sup>

Begins with moderate breeze and pleasant from the E. ship heading to the S.E. middle part in ships day 4 sails in sight middle part latter part pleasant.

Latitude 33.50 S.  
Longitude 172.00 E.

Saturday December 29<sup>th</sup>

Begins with strong breeze and pleasant from the S.E. ship heading to the E.S.E. middle part in sailing the breeze ruffling middle and latter part much the same.

Latitude 33.50 S.  
Longitude 173.08 E.

Sunday December 30<sup>th</sup>

Begins with strong breeze and pleasant from the S.E. ship heading to the E.S.E. middle part in sailing down the breeze ruffing at 4 finished middle and latter part pleasant.

Latitude 33.50 S. Longitude 173.58 E.

Monday December 31<sup>st</sup> 1860

Begins with strong breeze and pleasant from the E.S.E. ship heading to the S. middle part in the S.E. latter part a new bore to trail.

Latitude 34.00 S. Longitude 174.25 E.