

Ship Falcon cruising for Right Whale Nov 18 37

Sunday 5th

Moderate winds at West and thick weather  
Steering by to the Southward Spoke ship  
Good return of N B Starboard 2000 lbs 530 apear  
Latter part strong winds at SW  
by on both tracks Spoke ship George and Martha  
Killer of N B 1400 200 apear same a  
Mentals of fin backs Lat 36.51 Long 65.40 8

Monday 6th

Strong winds at NW steering by on both tracks  
by on both tracks strong winds at South steering  
to the North Employed in ships death  
Saw Nothing

Tuesday 7th

Strong winds at South steering to the N B  
Saw Whales going away quick. Sounded  
without success Employed in ships death  
and so ends Lat 34.45 Long 66.00

Wednesday 8th

Moderate winds at SE and thick weather  
Saw Whales but found them moving wild  
could not get near them Spoke ship  
Connecticut of N London 7 Whales

Lat 34.47 South Long 66.12 East



Thursday 9th

Moderate winds at SE steering off to the  
Northward Saw Whales sounded and took some  
to the ship began cutting and so ends  
Lat 34.57 Long 65.51 East

Friday 10th

Moderate Saw Whales sounded without success  
Employed in killing and so ends

Lat 34.54 Long 66.00 East

Ship Falcon cruising for Right Whale Nov 18 37

Saturday 11th

Moderate Saw Whales sounded and took one to the ship  
and made him fast for the night at day light  
began cutting and so ends N B

Sunday 12th

Moderate gales at West Employed in cutting  
and began killing so ends Lat 34.54  
Long 66.20 East

Monday 13th

Moderate gales at West steering by to the South  
Employed in killing at 8 finished  
Employed in killing four and so ends  
so ends

Tuesday 14th

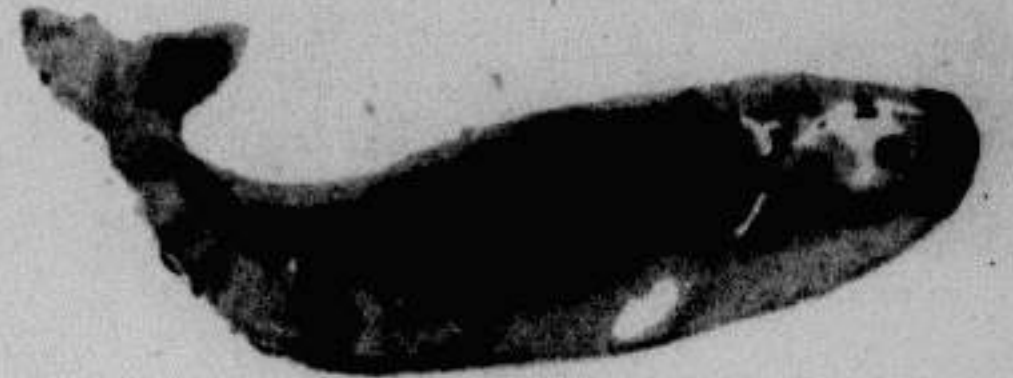
Strong winds at SW steering by to the North  
at 6 P.M. the ship to the Southward Employed  
in killing four and with light winds and  
fine weather saw nothing but one ship

Lat 34.22 Long 67.20 East

Wednesday 15th

Moderate winds at South and fine weather  
Saw one whale sounded and took him to the ship  
and cut him in. Latter part moderate  
gales at West heading to the Southward  
Employed in killing and so ends

Lat 34.43 South Long 67.21 East



Thursday 16th

Moderate gales at West heading to the Southward  
Employed in killing and with light winds at SW  
one ship in sight Saw one whale moving quick  
sounded without success Lat 34.50 Long 67.30 East

Friday 17th

Light air at SW with a thick fog. Employed in  
killing and steering four at 10 finished  
killing and with moderate gales at SW Saw  
Whales sounded without success ship head to the  
SW Lat 34.29 Long 68.30 East