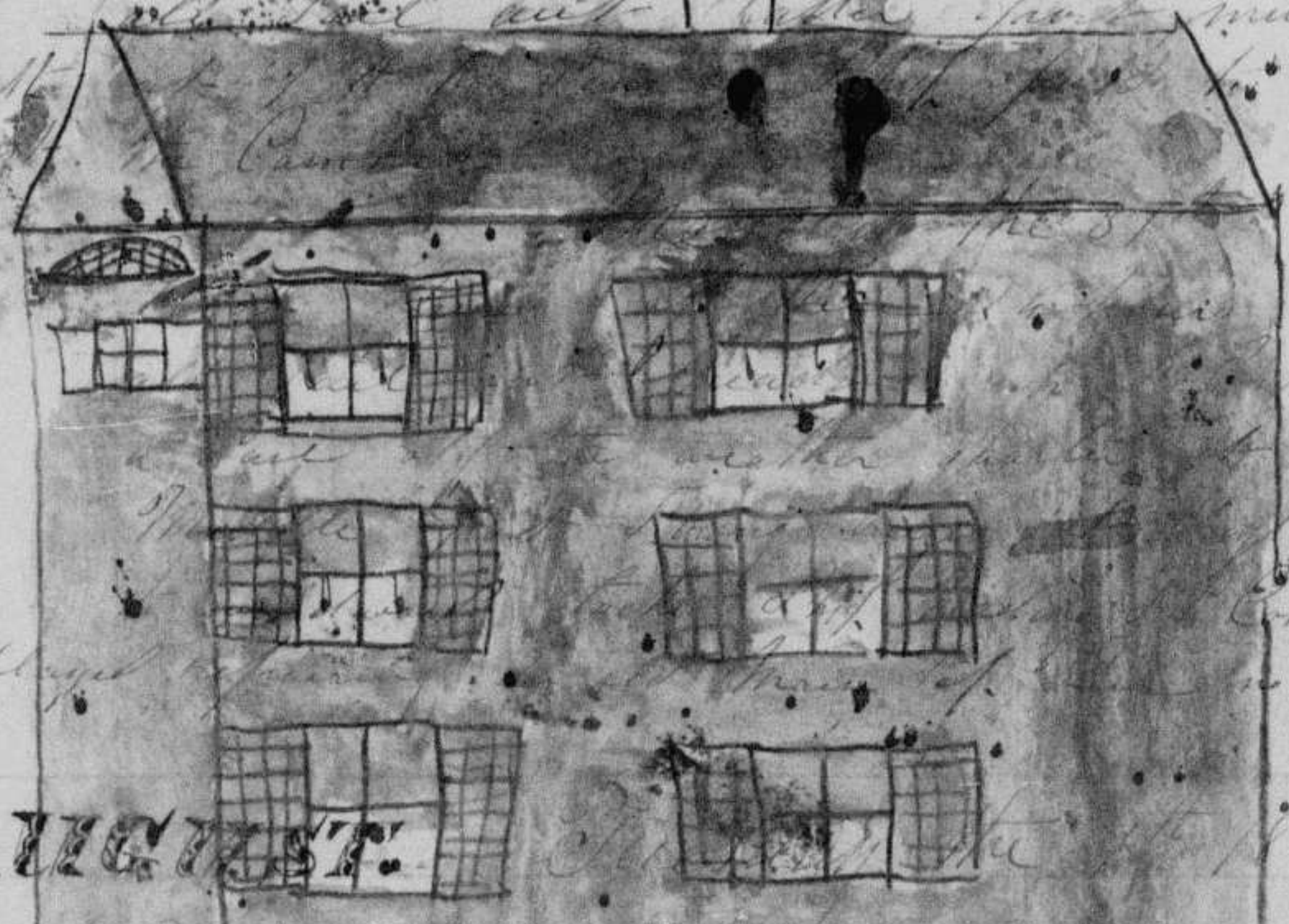


**JULY**

Sunday the 30th

First part of these 24 hours gentle breeze all sail out standing Southward at 3 P.M. tacked ship heading East by North. Middle part took breeze all sail out at 11 A.M. heading Southward at 11 A.M.

1. n 30  
171 n 00



1. n 05  
170 n 57

**AUGUST**

Monday the 1st

First part of these 24 hours moderate breeze all sail out standing Southward at 3 P.M. tacking to the East by North. Middle part the same at 11 A.M. heading East by North. Latter part the same at 11 A.M. heading East by North.

1. n 05  
171 n 11

First part of these 24 hours gentle breeze all sail out at 4 P.M. tacked ship heading East by North. Middle part heading East by North. Latter part the same at 11 A.M. Saw sperm whales going to windward at 11 A.M. struck one and struck one and the line parted and we lost him.

1. n 06  
171 n 57

Tuesday the 2nd

First part of these 24 hours gentle breeze chasing whales to windward at sunset some an hour could not strike. Middle part tacked ship to the S.E. East at 11 A.M. Saw sperm whales toward 4 boats struck one and lost the line and whale bad manners to suck back.

11

Wednesday the 3rd

First part of these 24 hours gentle breeze chasing whales to windward could not come up with them over took one calf and struck him and took him to the ship. Middle part fine moderate weather heading East South East all sail out. Continued 53

Wednesday the 16th

First part of these 24 hours strong breeze and squally at 1 P.M. tacked ship to the East a high swell running at midnight very squally. Latter part much the same employed setting up the main rigging.

1. n 08  
171 n 49

Thursday the 17th

First part of these 24 hours took breeze all sail out heading East. Middle part the same at 11 A.M. tacked ship to the S.E. East at 11 A.M. heading East by North.



1. n 24  
172 n 10

First part of these 24 hours strong breeze and a heavy swell at 3 P.M. tacked ship to the East. Middle part tacked ship to the South strong breeze and very squally double reefed fore and aft. Latter part the same.

Friday the 21st

First part strong breeze and very squally at 1 P.M. tacked ship to the East. Saw a whale spout but lost the pair of him in squalls. Middle part strong breeze and squally tacked ship to the S.E. East. Latter part the same squally as the devil at noon quite squally.

1. n 29  
172 n 33