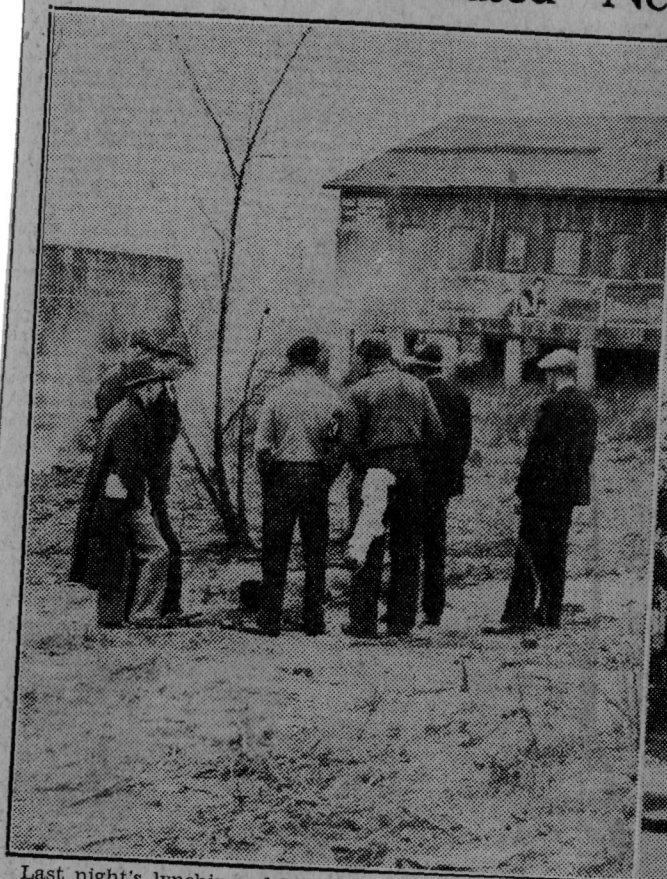


by Lynch Leaders Face

Where Accused Negro Was Hanged and Burned



Last night's lynching of Matthew Handy, Negro murderer, at Salisbury took place at the scenes shown in the above photos. The tree at the extreme right of the Courthouse, near the side entrance to the building, is the one a mob of 2,500 Eastern Shoremen used to hang Handy. They secured the rope to the lamp-post seen near the tree. After Handy was choked to death he was dragged about a quarter of a mile to the edge of the Negro settlement at Salisbury and burned, his clothing being saturated with gasoline before the flame was lighted. Photo at right shows a group of Salisbury residents standing about the embers of the fire which was Handy's pyre. State investigation is under way today to determine the identity of those guilty of the outrage.

TENNESSEE WINS DAVENS BEAT

CADY'S

NAVY DENN TIED

RIT
PE
BE

Over 2,0
Kill

FEELING

Witness

An ing
Eastern S
ing and b
cused of s

The Ne
and hange
by a mob

Later t
the busin
40 gallons
Two typ