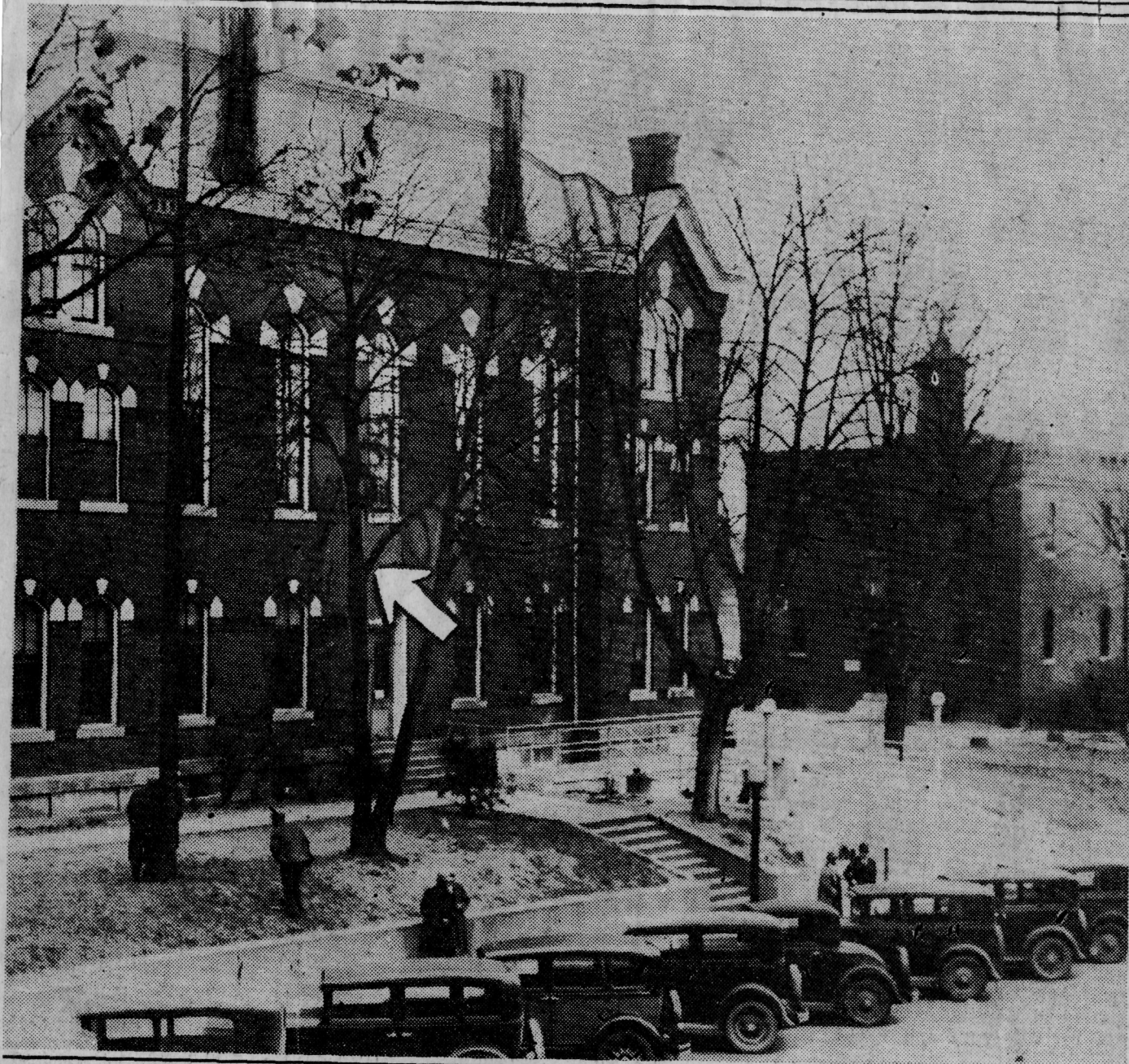


WHERE KILLER WAS HANGED BY SHORE MOB



LYNCHED—A few hours after he had shot and killed Daniel J. Elliott, prominent Salisbury lumber dealer, yesterday, Matthew Williams, negro, was lynched by mob of 2,500. Pictured above is Court House yard, where seriously

wounded negro was hanged before his body was burned. The arrow points to limb of tree from which he was hanged, directly in front of Court House, and next door to city jail. The other picture shows the window in the negro ward of

the Peninsula Hospital through which six members of the mob threw Williams to the crowd below. Men guarding Williams claim they will recognize members of mob if they ever get chance to see them again.